

Sarcalumenin Polyclonal Antibody

Purified Rabbit Polyclonal Antibody (Pab)

Catalog # AP57502

Product Information

Application	WB, IHC-P, IHC-F, IF, ICC, E
Primary Accession	Q86TD4
Reactivity	Human, Mouse
Host	Rabbit
Clonality	Polyclonal
Calculated MW	54431
Physical State	Liquid
Immunogen	KLH conjugated synthetic peptide derived from human Sarcalumenin,Isoform 2
Epitope Specificity	451-550/932
Isotype	IgG
Purity	affinity purified by Protein A
Buffer	0.01M TBS (pH7.4) with 1% BSA, 0.02% Proclin300 and 50% Glycerol.
SUBCELLULAR LOCATION	Sarcoplasmic reticulum lumen. Associated through calcium with the membrane.
SIMILARITY	Belongs to the TRAFAC class dynamin-like GTPase superfamily. Dynamin/Fzo/YdjA family. {ECO:0000305}. Contains 1 dynamin-type G (guanine nucleotide-binding) domain.
Important Note	This product as supplied is intended for research use only, not for use in human, therapeutic or diagnostic applications.

Additional Information

Gene ID	6345
Other Names	Sarcalumenin, SRL
Dilution	WB=1:500-2000,IHC-P=1:100-500,IHC-F=1:100-500,ICC=1:100-500,IF=1:100-500,ELISA=1:5000-10000
Format	0.01M TBS(pH7.4) with 1% BSA, 0.09% (W/V) sodium azide and 50% Glyce
Storage	Store at -20 °C for one year. Avoid repeated freeze/thaw cycles. When reconstituted in sterile pH 7.4 0.01M PBS or diluent of antibody the antibody is stable for at least two weeks at 2-4 °C.

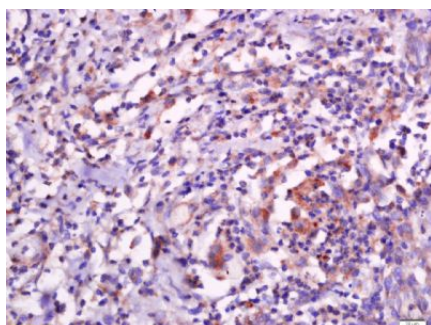
Protein Information

Name	SRL
-------------	-----

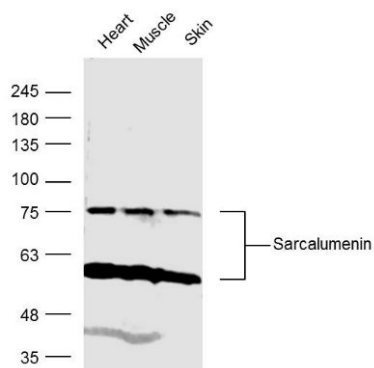
Cellular Location

Sarcoplasmic reticulum lumen {ECO:0000250|UniProtKB:P13666}.
Sarcoplasmic reticulum membrane {ECO:0000250|UniProtKB:P13666};
Peripheral membrane protein {ECO:0000250|UniProtKB:P13666}. Note=May
associate with the sarcoplasmic reticulum membrane, via a
calcium-dependent mechanism {ECO:0000250|UniProtKB:P13666}

Images



Tissue/cell: human esophageal carcinoma; 4%
Paraformaldehyde-fixed and paraffin-embedded;
Antigen retrieval: citrate buffer (0.01M, pH 6.0), Boiling
bathing for 15min; Block endogenous peroxidase by 3%
Hydrogen peroxide for 30min; Blocking buffer (normal
goat serum,C-0005) at 37°C for 20 min;
Incubation: Anti-Sarcalumenin Polyclonal Antibody,
Unconjugated(AP57502) 1:500, overnight at 4°C, followed
by conjugation to the secondary antibody(SP-0023) and
DAB(C-0010) staining



Sample:
Heart (Mouse) Lysate at 40 ug
Muscle (Mouse) Lysate at 40 ug
Skin (Mouse) Lysate at 40 ug
Primary: Anti- Sarcalumenin (AP57502) at 1/300 dilution
Secondary: IRDye800CW Goat Anti-Rabbit IgG at
1/20000 dilution
Predicted band size: 97kD
Observed band size: 75 kD

Please note: All products are 'FOR RESEARCH USE ONLY. NOT FOR USE IN DIAGNOSTIC OR THERAPEUTIC PROCEDURES'.