

PRR16/DSC54 Polyclonal Antibody

Purified Rabbit Polyclonal Antibody (Pab)

Catalog # AP57511

Product Information

Application	WB, IHC-P, IHC-F, IF, ICC, E
Primary Accession	Q569H4
Reactivity	Rat, Dog, Bovine
Host	Rabbit
Clonality	Polyclonal
Calculated MW	32812
Physical State	Liquid
Immunogen	KLH conjugated synthetic peptide derived from human PRR16/DSC54
Epitope Specificity	231-304/304
Isotype	IgG
Purity	affinity purified by Protein A
Buffer	0.01M TBS (pH7.4) with 1% BSA, 0.02% Proclin300 and 50% Glycerol.
Important Note	This product as supplied is intended for research use only, not for use in human, therapeutic or diagnostic applications.

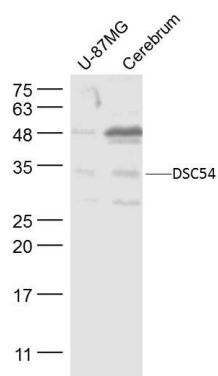
Additional Information

Gene ID	51334
Other Names	Protein Largen, Mesenchymal stem cell protein DSC54, Proline-rich protein 16, PRR16
Dilution	WB=1:500-2000,IHC-P=1:100-500,IHC-F=1:100-500,ICC=1:100-500,IF=1:100-500,ELISA=1:5000-10000
Format	0.01M TBS(pH7.4) with 1% BSA, 0.09% (W/V) sodium azide and 50% Glyce
Storage	Store at -20 °C for one year. Avoid repeated freeze/thaw cycles. When reconstituted in sterile pH 7.4 0.01M PBS or diluent of antibody the antibody is stable for at least two weeks at 2-4 °C.

Protein Information

Name	PRR16
Function	Regulator of cell size that promotes cell size increase independently of mTOR and Hippo signaling pathways. Acts by stimulating the translation of specific mRNAs, including those encoding proteins affecting mitochondrial functions. Increases mitochondrial mass and respiration.

Images



Sample:

U-87MG(Human) Lysate at 30 ug

Cerebrum (Mouse) Lysate at 40 ug

Primary: Anti-DSC54 (AP57511) at 1/300 dilution

Secondary: IRDye800CW Goat Anti-Rabbit IgG at
1/20000 dilution

Predicted band size: 33 kD

Observed band size: 33 kD

Please note: All products are 'FOR RESEARCH USE ONLY. NOT FOR USE IN DIAGNOSTIC OR THERAPEUTIC PROCEDURES'.