

PSMA8 Polyclonal Antibody

Purified Rabbit Polyclonal Antibody (Pab)

Catalog # AP57530

Product Information

Application	WB, IHC-P, IHC-F, IF, ICC
Primary Accession	Q8TAA3
Reactivity	Rat, Pig, Dog, Cynomolgus, Bovine
Host	Rabbit
Clonality	Polyclonal
Calculated MW	28530
Physical State	Liquid
Immunogen	KLH conjugated synthetic peptide derived from human PSMA8
Epitope Specificity	121-220/256
Isotype	IgG
Purity	affinity purified by Protein A
Buffer	0.01M TBS (pH7.4) with 1% BSA, 0.02% Proclin300 and 50% Glycerol.
SUBCELLULAR LOCATION	Cytoplasm. Nucleus.
SIMILARITY	Belongs to the peptidase T1A family.
SUBUNIT	The 26S proteasome consists of a 20S proteasome core and two 19S regulatory subunits. The 20S proteasome core is composed of 28 subunits that are arranged in four stacked rings, resulting in a barrel-shaped structure. The two end rings are each formed by seven alpha subunits, and the two central rings are each formed by seven beta subunits. The catalytic chamber with the active sites is on the inside of the barrel (By similarity). Component of the spermatoproteasome, a form of the proteasome specifically found in testis.
Important Note	This product as supplied is intended for research use only, not for use in human, therapeutic or diagnostic applications.

Additional Information

Gene ID	143471
Other Names	Proteasome subunit alpha-type 8, Proteasome alpha 4 subunit, Proteasome subunit alpha-type 7-like, PSMA8, PSMA7L
Dilution	WB=1:500-2000,IHC-P=1:100-500,IHC-F=1:100-500,ICC=1:100-500,IF=1:100-500
Format	0.01M TBS(pH7.4) with 1% BSA, 0.09% (W/V) sodium azide and 50% Glyce
Storage	Store at -20 °C for one year. Avoid repeated freeze/thaw cycles. When reconstituted in sterile pH 7.4 0.01M PBS or diluent of antibody the antibody is stable for at least two weeks at 2-4 °C.

Protein Information

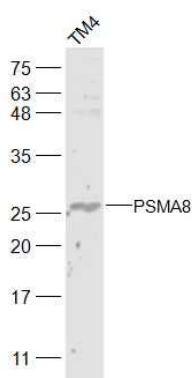
Name PSMA8

Synonyms PSMA7L

Function Component of the spermatoproteasome, a proteasome specifically found in testis that promotes acetylation-dependent degradation of histones, thereby participating actively to the exchange of histones during spermatogenesis. The proteasome is a protein complex that degrades unneeded or damaged proteins by proteolysis, a chemical reaction that breaks peptide bonds. Required for 20S core proteasome assembly, essential for the degradation of meiotic proteins RAD51 and RPA1 at late prophase I and the progression of meiosis I during spermatogenesis. Localizes to the synaptonemal complex, a 'zipper'-like structure that holds homologous chromosome pairs in synapsis during meiotic prophase I.

Cellular Location Nucleus {ECO:0000250 | UniProtKB:Q9CWH6}. Note=Localizes to the central region of the synaptonemal complex {ECO:0000250 | UniProtKB:Q9CWH6}

Images



Sample:

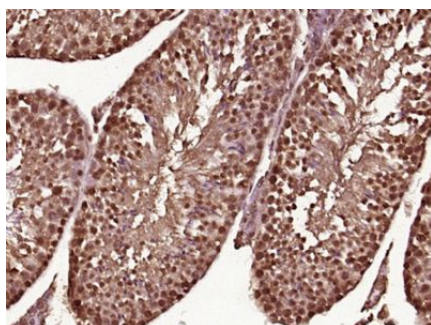
TM4(Mouse) Cell Lysate at 30 ug

Primary: Anti-PSMA8 (AP57530) at 1/300 dilution

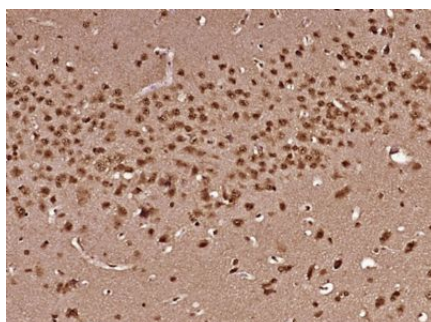
Secondary: IRDye800CW Goat Anti-Rabbit IgG at 1/20000 dilution

Predicted band size: 29 kD

Observed band size: 29 kD



Paraformaldehyde-fixed, paraffin embedded (Mouse testis); Antigen retrieval by boiling in sodium citrate buffer (pH6.0) for 15min; Block endogenous peroxidase by 3% hydrogen peroxide for 20 minutes; Blocking buffer (normal goat serum) at 37°C for 30min; Antibody incubation with (PSMA8) Polyclonal Antibody, Unconjugated (AP57530) at 1:400 overnight at 4°C, followed by operating according to SP Kit(Rabbit) (sp-0023) instructions and DAB staining.



Paraformaldehyde-fixed, paraffin embedded (Mouse brain); Antigen retrieval by boiling in sodium citrate buffer (pH6.0) for 15min; Block endogenous peroxidase by 3% hydrogen peroxide for 20 minutes; Blocking buffer (normal goat serum) at 37°C for 30min; Antibody incubation with (PSMA8) Polyclonal Antibody, Unconjugated (AP57530) at 1:400 overnight at 4°C, followed by operating according to SP Kit(Rabbit) (sp-0023) instructions and DAB staining.

Please note: All products are 'FOR RESEARCH USE ONLY. NOT FOR USE IN DIAGNOSTIC OR THERAPEUTIC PROCEDURES'.