

# NT5D1 Rabbit pAb

NT5D1 Rabbit pAb  
Catalog # AP57546

## Product Information

---

<b>Application</b>	WB
<b>Primary Accession</b>	<a href="#">Q5TFE4</a>
<b>Reactivity</b>	Mouse
<b>Predicted</b>	Human, Rat, Chicken, Dog, Pig, Horse, Rabbit, Sheep, Monkey
<b>Host</b>	Rabbit
<b>Clonality</b>	Polyclonal
<b>Calculated MW</b>	51845
<b>Physical State</b>	Liquid
<b>Immunogen</b>	KLH conjugated synthetic peptide derived from human NT5D1
<b>Epitope Specificity</b>	221-320/455
<b>Isotype</b>	IgG
<b>Purity</b>	affinity purified by Protein A
<b>Buffer</b>	0.01M TBS (pH7.4) with 1% BSA, 0.02% Proclin300 and 50% Glycerol.
<b>SIMILARITY</b>	Belongs to the 5'(3')-deoxyribonucleotidase family.
<b>Important Note</b>	This product as supplied is intended for research use only, not for use in human, therapeutic or diagnostic applications.

## Additional Information

---

<b>Gene ID</b>	221294
<b>Other Names</b>	5'-nucleotidase domain-containing protein 1, 3.1.3.-, NT5DC1, NT5C2L1
<b>Dilution</b>	WB=1:500-2000
<b>Storage</b>	Store at -20 °C for one year. Avoid repeated freeze/thaw cycles. When reconstituted in sterile pH 7.4 0.01M PBS or diluent of antibody the antibody is stable for at least two weeks at 2-4 °C.

## Protein Information

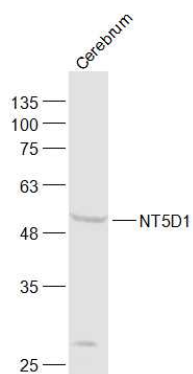
---

<b>Name</b>	NT5DC1
<b>Synonyms</b>	NT5C2L1

## Images

---

Sample:



Cerebrum (Mouse) Lysate at 40 ug  
Primary: Anti-NT5D1 (AP57546) at 1/1000 dilution  
Secondary: IRDye800CW Goat Anti-Rabbit IgG at 1/20000 dilution  
Predicted band size: 52 kD  
Observed band size: 52 kD

Please note: All products are 'FOR RESEARCH USE ONLY. NOT FOR USE IN DIAGNOSTIC OR THERAPEUTIC PROCEDURES'.