

PSMG1 Polyclonal Antibody

Purified Rabbit Polyclonal Antibody (Pab)

Catalog # AP57582

Product Information

Application	WB, IHC-P, IHC-F, IF, ICC, E
Primary Accession	O95456
Reactivity	Human, Mouse
Host	Rabbit
Clonality	Polyclonal
Calculated MW	32854
Physical State	Liquid
Immunogen	KLH conjugated synthetic peptide derived from human PSMG1
Epitope Specificity	21-100/288
Isotype	IgG
Purity	affinity purified by Protein A
Buffer	0.01M TBS (pH7.4) with 1% BSA, 0.02% Proclin300 and 50% Glycerol.
SUBCELLULAR LOCATION	Cytoplasm. Endoplasmic reticulum.
SIMILARITY	Belongs to the PSMG1 family.
SUBUNIT	Forms a heterodimer with PSMG2. The PSMG1-PSMG2 heterodimer interacts directly with the PSMA5 and PSMA7 proteasome alpha subunits.
Post-translational modifications	Degraded by the proteasome upon completion of 20S proteasome maturation.
Important Note	This product as supplied is intended for research use only, not for use in human, therapeutic or diagnostic applications.
Background Descriptions	PSMG1 is a chaperone protein which promotes assembly of the 20S proteasome as part of a heterodimer with PSMG2. The PSMG1-PSMG2 heterodimer binds to the PSMA5 and PSMA7 proteasome subunits, promotes assembly of the proteasome alpha subunits into the heteroheptameric alpha ring and prevents alpha ring dimerization. There are two named isoforms.

Additional Information

Gene ID	8624
Other Names	Proteasome assembly chaperone 1, PAC-1, Chromosome 21 leucine-rich protein, C21-LRP, Down syndrome critical region protein 2, PSMG1, C21LRP, DSCR2, PAC1
Target/Specificity	In the adult, detected in brain, colon, leukocytes, breast and testis. Widely expressed in the fetus. Also expressed in a variety of proliferating cell lines.
Dilution	WB=1:500-2000,IHC-P=1:100-500,IHC-F=1:100-500,ICC=1:100-500,IF=1:100-500,ELISA=1:5000-10000
Format	0.01M TBS(pH7.4) with 1% BSA, 0.09% (W/V) sodium azide and 50% Glyce

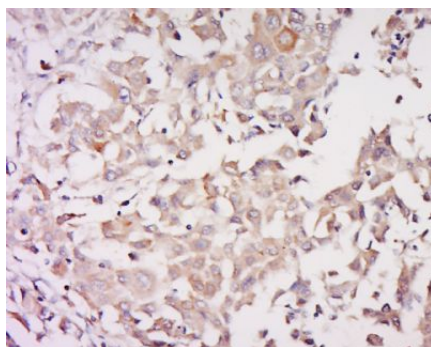
Storage

Store at -20 °C for one year. Avoid repeated freeze/thaw cycles. When reconstituted in sterile pH 7.4 0.01M PBS or diluent of antibody the antibody is stable for at least two weeks at 2-4 °C.

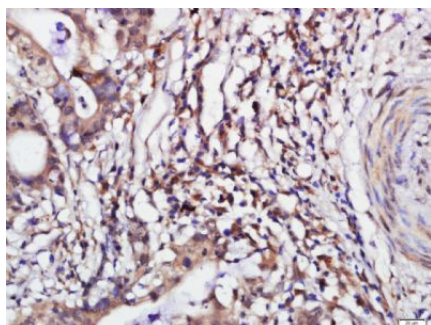
Protein Information

Name	PSMG1 (HGNC:3043)
Synonyms	C21LRP, DSCR2, PAC1
Function	Chaperone protein which promotes assembly of the 20S proteasome as part of a heterodimer with PSMG2. The PSMG1-PSMG2 heterodimer binds to the PSMA5 and PSMA7 proteasome subunits, promotes assembly of the proteasome alpha subunits into the heteroheptameric alpha ring and prevents alpha ring dimerization.
Cellular Location	Cytoplasm. Endoplasmic reticulum.
Tissue Location	In the adult, detected in brain, colon, leukocytes, breast and testis. Widely expressed in the fetus. Also expressed in a variety of proliferating cell lines.

Images

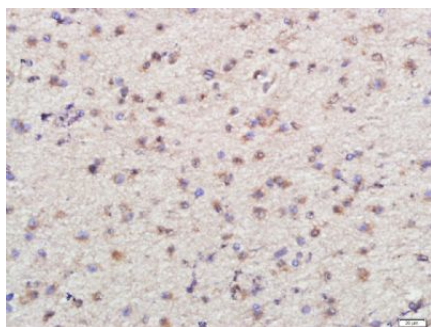


Tissue/cell: human breast carcinoma; 4%
Paraformaldehyde-fixed and paraffin-embedded;
Antigen retrieval: citrate buffer (0.01M, pH 6.0), Boiling
bathing for 15min; Block endogenous peroxidase by 3%
Hydrogen peroxide for 30min; Blocking buffer (normal
goat serum,C-0005) at 37 °C for 20 min;
Incubation: Anti-PSMG1 Polyclonal Antibody,
Unconjugated(AP57582) 1:500, overnight at 4 °C,
followed by conjugation to the secondary
antibody(SP-0023) and DAB(C-0010) staining

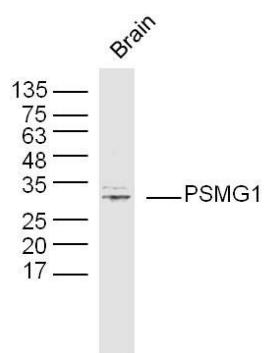


Tissue/cell: human cervix carcinoma; 4%
Paraformaldehyde-fixed and paraffin-embedded;
Antigen retrieval: citrate buffer (0.01M, pH 6.0), Boiling
bathing for 15min; Block endogenous peroxidase by 3%
Hydrogen peroxide for 30min; Blocking buffer (normal
goat serum,C-0005) at 37 °C for 20 min;
Incubation: Anti-PSMG1 Polyclonal Antibody,
Unconjugated(AP57582) 1:200, overnight at 4 °C,
followed by conjugation to the secondary
antibody(SP-0023) and DAB(C-0010) staining

Tissue/cell: human brain glioma; 4%
Paraformaldehyde-fixed and paraffin-embedded;
Antigen retrieval: citrate buffer (0.01M, pH 6.0), Boiling
bathing for 15min; Block endogenous peroxidase by 3%
Hydrogen peroxide for 30min; Blocking buffer (normal
goat serum,C-0005) at 37 °C for 20 min;
Incubation: Anti-PSMG1 Polyclonal Antibody,
Unconjugated(AP57582) 1:200, overnight at 4 °C,



followed by conjugation to the secondary antibody(SP-0023) and DAB(C-0010) staining



Protein: brain(mouse) lysate at 40ug;
 Primary: rabbit Anti-PSME1 (bs-19575R) at 1:300;
 Secondary: IRDye800CW Goat Anti-Rabbit IgG at 1/20000 dilution
 Predicted band size: 29 kD
 Observed band size: 29 kD

Please note: All products are 'FOR RESEARCH USE ONLY. NOT FOR USE IN DIAGNOSTIC OR THERAPEUTIC PROCEDURES'.