

SEPHS1 Polyclonal Antibody

Purified Rabbit Polyclonal Antibody (Pab)

Catalog # AP57603

Product Information

Application	WB, IHC-P, IHC-F, IF, ICC, E
Primary Accession	P49903
Reactivity	Rat, Pig, Dog, Bovine
Host	Rabbit
Clonality	Polyclonal
Calculated MW	42911
Physical State	Liquid
Immunogen	KLH conjugated synthetic peptide derived from human SEPHS1
Epitope Specificity	2-100/392
Isotype	IgG
Purity	affinity purified by Protein A
Buffer	0.01M TBS (pH7.4) with 1% BSA, 0.02% Proclin300 and 50% Glycerol.
SIMILARITY	Belongs to the selenophosphate synthase 1 family. Class II subfamily.
SUBUNIT	Homodimer (isoform 1, isoform 2, isoform 3 and isoform 4). Heterodimer of isoform 1 and isoform 3. Heterodimer of isoform 2 and isoform 4.
Important Note	This product as supplied is intended for research use only, not for use in human, therapeutic or diagnostic applications.
Background Descriptions	This gene encodes an enzyme that synthesizes selenophosphate from selenide and ATP. Selenophosphate is the selenium donor used to synthesize selenocysteine, which is co-translationally incorporated into selenoproteins at in-frame UGA codons. [provided by RefSeq, Sep 2010]

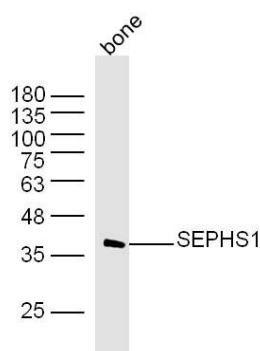
Additional Information

Gene ID	22929
Other Names	Selenide, water dikinase 1, 2.7.9.3, Selenium donor protein 1, Selenophosphate synthase 1, SEPHS1, SELD, SPS, SPS1
Target/Specificity	Isoform 1 and isoform 2 are gradually expressed during the cell cycle until G2/M phase and then decreased. Isoform 3 is gradually expressed during the cell cycle until S phase and then decreased.
Dilution	WB=1:500-2000,IHC-P=1:100-500,IHC-F=1:100-500,ICC=1:100-500,IF=1:100-500,ELISA=1:5000-10000
Format	0.01M TBS(pH7.4) with 1% BSA, 0.09% (W/V) sodium azide and 50% Glyce
Storage	Store at -20 °C for one year. Avoid repeated freeze/thaw cycles. When reconstituted in sterile pH 7.4 0.01M PBS or diluent of antibody the antibody is stable for at least two weeks at 2-4 °C.

Protein Information

Name	SEPHS1
Synonyms	SELD, SPS, SPS1
Function	Synthesizes selenophosphate from selenide and ATP.
Cellular Location	[Isoform 1]: Cell membrane; Peripheral membrane protein. Nucleus membrane; Peripheral membrane protein [Isoform 3]: Cytoplasm
Tissue Location	[Isoform 1]: Gradually expressed during the cell cycle until G2/M phase and then decreases [Isoform 3]: Gradually expressed during the cell cycle until S phase and then decreases.

Images



Protein: bone(mouse) lysate at 40ug;
Primary: rabbit Anti-SEPHS1(AP57603) at 1:300;
Secondary: IRDye800CW Goat Anti-Rabbit IgG at 1/20000 dilution
Predicted band size: 43 kD
Observed band size: 36 kD

Please note: All products are 'FOR RESEARCH USE ONLY. NOT FOR USE IN DIAGNOSTIC OR THERAPEUTIC PROCEDURES'.