

SERGEF Polyclonal Antibody

Purified Rabbit Polyclonal Antibody (Pab)

Catalog # AP57608

Product Information

Application	WB, IHC-P, IHC-F, IF, ICC, E
Primary Accession	Q9UGK8
Reactivity	Rat
Host	Rabbit
Clonality	Polyclonal
Calculated MW	48981
Physical State	Liquid
Immunogen	KLH conjugated synthetic peptide derived from human SERGEF
Epitope Specificity	241-340/458
Isotype	IgG
Purity	affinity purified by Protein A
Buffer	0.01M TBS (pH7.4) with 1% BSA, 0.02% Proclin300 and 50% Glycerol.
SUBCELLULAR LOCATION	Cytoplasmic and Nuclear
DISEASE	A chromosomal aberration involving OLIG2 may be a cause of a form of T-cell acute lymphoblastic leukemia (T-ALL). Translocation t(14;21)(q11.2;q22) with TCRA.
Important Note	This product as supplied is intended for research use only, not for use in human, therapeutic or diagnostic applications.

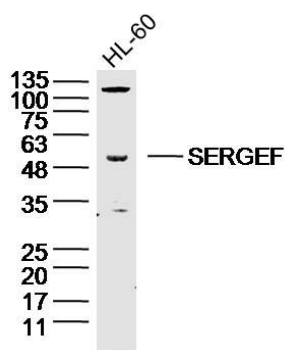
Additional Information

Gene ID	26297
Other Names	Secretion-regulating guanine nucleotide exchange factor, Deafness locus-associated putative guanine nucleotide exchange factor, DelGEF, Guanine nucleotide exchange factor-related protein, SERGEF, DELGEF, GNEFR
Target/Specificity	Expressed in the brain, in oligodendrocytes. Strongly expressed in oligodendrogliomas, while expression is weak to moderate in astrocytomas. Expression in glioblastomas highly variable.
Dilution	WB=1:500-2000,IHC-P=1:100-500,IHC-F=1:100-500,ICC=1:100-500,IF=1:100-500,ELISA=1:5000-10000
Format	0.01M TBS(pH7.4) with 1% BSA, 0.09% (W/V) sodium azide and 50% Glyce
Storage	Store at -20 °C for one year. Avoid repeated freeze/thaw cycles. When reconstituted in sterile pH 7.4 0.01M PBS or diluent of antibody the antibody is stable for at least two weeks at 2-4 °C.

Protein Information

Name	SERGEF
Synonyms	DELGEF, GNEFR
Function	Probable guanine nucleotide exchange factor (GEF), which may be involved in the secretion process.
Cellular Location	Cytoplasm. Nucleus

Images



Sample: HL-60 Cell (Human) Lysate at 40 ug
Primary: Anti-SERGEF(AP57608) at 1/300 dilution
Secondary: IRDye800CW Goat Anti-Rabbit IgG at 1/20000 dilution
Predicted band size: 50kD
Observed band size: 50kD

Please note: All products are 'FOR RESEARCH USE ONLY. NOT FOR USE IN DIAGNOSTIC OR THERAPEUTIC PROCEDURES'.