

RAB30 Rabbit pAb

RAB30 Rabbit pAb
Catalog # AP57633

Product Information

Application	IHC-P, IHC-F, IF
Primary Accession	Q15771
Reactivity	Mouse
Predicted	Human, Rat
Host	Rabbit
Clonality	Polyclonal
Calculated MW	23058
Physical State	Liquid
Immunogen	KLH conjugated synthetic peptide derived from human RAB30
Epitope Specificity	131-203/203
Isotype	IgG
Purity	affinity purified by Protein A
Buffer	0.01M TBS (pH7.4) with 1% BSA, 0.02% Proclin300 and 50% Glycerol.
SUBCELLULAR LOCATION	Cell membrane.
SIMILARITY	Belongs to the small GTPase superfamily. Rab family.
Important Note	This product as supplied is intended for research use only, not for use in human, therapeutic or diagnostic applications.

Additional Information

Gene ID	27314
Other Names	Ras-related protein Rab-30, 3.6.5.2, RAB30 (HGNC:9770)
Dilution	IHC-P=1:100-500,IHC-F=1:100-500,IF=1:100-500
Storage	Store at -20 °C for one year. Avoid repeated freeze/thaw cycles. When reconstituted in sterile pH 7.4 0.01M PBS or diluent of antibody the antibody is stable for at least two weeks at 2-4 °C.

Protein Information

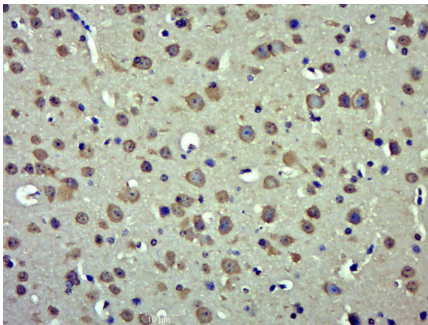
Name	RAB30 (HGNC:9770)
Function	The small GTPases Rab are key regulators of intracellular membrane trafficking, from the formation of transport vesicles to their fusion with membranes. Rabs cycle between an inactive GDP-bound form and an active GTP-bound form that is able to recruit to membranes different sets of downstream effectors directly responsible for vesicle formation, movement, tethering and fusion (PubMed: 22188167). RAB30 is required for maintaining

the structural integrity of the Golgi apparatus, possibly by mediating interactions with cytoplasmic scaffolding proteins (PubMed:[22188167](#)). Facilitates lipid homeostasis during fasting by regulating hepatic protein and lipid trafficking in a PPAR-alpha-dependent manner (By similarity). Promotes autophagosome biogenesis during bacterial infection such as group A Streptococcus infection (PubMed:[26771875](#)).

Cellular Location

Membrane; Lipid-anchor; Cytoplasmic side. Golgi apparatus, trans- Golgi network membrane. Golgi apparatus, cis-Golgi network membrane. Golgi apparatus membrane. Cytoplasm. Cytoplasmic vesicle, autophagosome membrane. Autolysosome membrane. Note=Localized to dynamic membranes fusing to and exiting from the Golgi apparatus (By similarity) Localized to group A Streptococcus (GAS)-containing autophagosome to autolysosome in GAS-infected epithelial cells (PubMed:26771875). Also colocalized with a starvation-induced autophagosome although not required for autophagosome formation during starvation (PubMed:26771875). {ECO:0000250|UniProtKB:Q923S9, ECO:0000269|PubMed:26771875}

Images



Paraformaldehyde-fixed, paraffin embedded (Mouse brain); Antigen retrieval by boiling in sodium citrate buffer (pH6.0) for 15min; Block endogenous peroxidase by 3% hydrogen peroxide for 20 minutes; Blocking buffer (normal goat serum) at 37°C for 30min; Antibody incubation with (RAB30) Polyclonal Antibody, Unconjugated (AP57633) at 1:500 overnight at 4°C, followed by a conjugated secondary (sp-0023) for 20 minutes and DAB staining.

Please note: All products are 'FOR RESEARCH USE ONLY. NOT FOR USE IN DIAGNOSTIC OR THERAPEUTIC PROCEDURES'.