

RAD26L/C9orf102 Rabbit pAb

RAD26L/C9orf102 Rabbit pAb

Catalog # AP57639

Product Information

Application	IHC-P, IHC-F, IF
Primary Accession	Q5T890
Reactivity	Rat
Predicted	Human, Mouse
Host	Rabbit
Clonality	Polyclonal
Calculated MW	176051
Physical State	Liquid
Immunogen	KLH conjugated synthetic peptide derived from human RAD26L/C9orf102
Epitope Specificity	461-560/1561
Isotype	IgG
Purity	affinity purified by Protein A
Buffer	0.01M TBS (pH7.4) with 1% BSA, 0.02% Proclin300 and 50% Glycerol.
SUBCELLULAR LOCATION	Nucleus.
SIMILARITY	Belongs to the SNF2/RAD54 helicase family. Contains 1 helicase ATP-binding domain. Contains 1 helicase C-terminal domain.
Important Note	This product as supplied is intended for research use only, not for use in human, therapeutic or diagnostic applications.
Background Descriptions	This gene encodes a member of the Snf2 family of helicase-like proteins. The encoded protein may play a role in DNA repair and mitochondrial function. Mutations in this gene have been associated with bone marrow failure syndrome 2. Alternatively spliced transcript variants that encode different protein isoforms have been described. [provided by RefSeq, Apr 2014]

Additional Information

Gene ID	375748
Other Names	DNA excision repair protein ERCC-6-like 2, 3.6.4.-, DNA repair and recombination protein RAD26-like, Excision repair cross-complementation group 6-like 2, ERCC6L2 (HGNC:26922), C9orf102, RAD26L
Dilution	IHC-P=1:100-500,IHC-F=1:100-500,IF=1:100-500
Storage	Store at -20 °C for one year. Avoid repeated freeze/thaw cycles. When reconstituted in sterile pH 7.4 0.01M PBS or diluent of antibody the antibody is stable for at least two weeks at 2-4 °C.

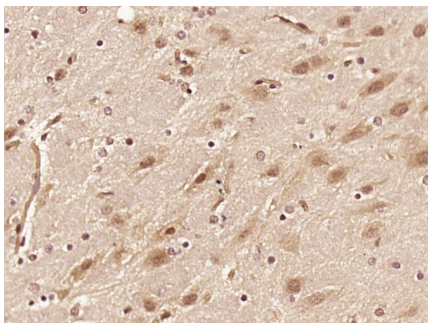
Protein Information

Name	ERCC6L2 (HGNC:26922)
Synonyms	C9orf102, RAD26L
Function	Promotes double-strand break (DSB) end-joining and facilitates programmed recombination by controlling how DNA ends are joined in a spatially oriented manner during repair (By similarity). Also plays a role in DNA repair by restricting DNA end resection in double strand break (DSB) repair (PubMed: 24507776 , PubMed: 37014751). Facilitates replication of complex DNA regions and regulates the maintenance of chromatin structure (PubMed: 37014751).
Cellular Location	Nucleus. Cytoplasm, cytoskeleton, microtubule organizing center, centrosome Mitochondrion. Chromosome, centromere. Note=Colocalizes with NEK6 in the centrosome (PubMed:20873783). In response to DNA damage, translocates from the cytosol to mitochondria and nucleus in a reactive oxygen species (ROS)-dependent manner (PubMed:24507776). Centromeric localization is facilitated by its interaction with PCNA (PubMed:37014751).
Tissue Location	Expressed in bone marrow (at protein level).

Background

This gene encodes a member of the Snf2 family of helicase-like proteins. The encoded protein may play a role in DNA repair and mitochondrial function. Mutations in this gene have been associated with bone marrow failure syndrome 2. Alternatively spliced transcript variants that encode different protein isoforms have been described. [provided by RefSeq, Apr 2014]

Images



Paraformaldehyde-fixed, paraffin embedded (Rat brain); Antigen retrieval by boiling in sodium citrate buffer (pH6.0) for 15min; Block endogenous peroxidase by 3% hydrogen peroxide for 20 minutes; Blocking buffer (normal goat serum) at 37°C for 30min; Antibody incubation with (RAD26L) Polyclonal Antibody, Unconjugated (AP57639) at 1:400 overnight at 4°C, followed by operating according to SP Kit(Rabbit) (sp-0023) instructions and DAB staining.

Please note: All products are 'FOR RESEARCH USE ONLY. NOT FOR USE IN DIAGNOSTIC OR THERAPEUTIC PROCEDURES'.