

PATL2 Polyclonal Antibody

Purified Rabbit Polyclonal Antibody (Pab)

Catalog # AP57705

Product Information

Application	WB, IHC-P, IHC-F, IF, ICC, E
Primary Accession	C9JE40
Reactivity	Rat, Dog
Host	Rabbit
Clonality	Polyclonal
Calculated MW	61464
Physical State	Liquid
Immunogen	KLH conjugated synthetic peptide derived from human PATL2
Epitope Specificity	301-400/543
Isotype	IgG
Purity	affinity purified by Protein A
Buffer	0.01M TBS (pH7.4) with 1% BSA, 0.02% Proclin300 and 50% Glycerol.
SUBCELLULAR LOCATION	Cytoplasm. Nucleus.
SIMILARITY	Belongs to the PAT1 family.
SUBUNIT	Interacts with LSM1.
Important Note	This product as supplied is intended for research use only, not for use in human, therapeutic or diagnostic applications.

Additional Information

Gene ID	197135
Other Names	Protein PAT1 homolog 2, PAT1-like protein 2, Protein PAT1 homolog a, Pat1a, hPat1a, PATL2
Dilution	WB=1:500-2000,IHC-P=1:100-500,IHC-F=1:100-500,ICC=1:100-500,IF=1:100-500,ELISA=1:5000-10000
Format	0.01M TBS(pH7.4) with 1% BSA, 0.09% (W/V) sodium azide and 50% Glyce
Storage	Store at -20 °C for one year. Avoid repeated freeze/thaw cycles. When reconstituted in sterile pH 7.4 0.01M PBS or diluent of antibody the antibody is stable for at least two weeks at 2-4 °C.

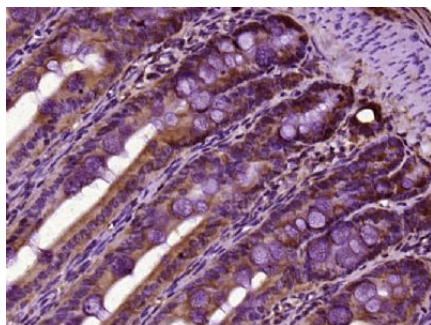
Protein Information

Name	PATL2
Function	RNA-binding protein that acts as a translational repressor.

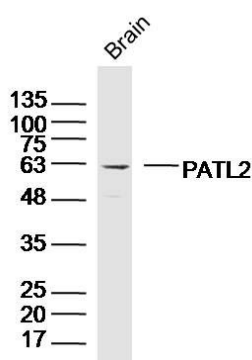
Cellular Location Cytoplasm. Nucleus {ECO:0000250|UniProtKB:A2ARM1}

Tissue Location Highly expressed in oocytes.

Images



Paraformaldehyde-fixed, paraffin embedded (rat intestine tissue); Antigen retrieval by boiling in sodium citrate buffer (pH6.0) for 15min; Block endogenous peroxidase by 3% hydrogen peroxide for 20 minutes; Blocking buffer (normal goat serum) at 37°C for 30min; Antibody incubation with (PATL2) Polyclonal Antibody, Unconjugated (AP57705) at 1:400 overnight at 4°C, followed by operating according to SP Kit(Rabbit) (sp-0023) instructions and DAB staining.



Sample: Brain (Mouse) Lysate at 40 ug
Primary: Anti- PATL2 (AP57705) at 1/300 dilution
Secondary: IRDye800CW Goat Anti-Rabbit IgG at 1/20000 dilution
Predicted band size: 61 kD
Observed band size: 61 kD

Please note: All products are 'FOR RESEARCH USE ONLY. NOT FOR USE IN DIAGNOSTIC OR THERAPEUTIC PROCEDURES'.