

PPPDE1/FAM152A Polyclonal Antibody

Purified Rabbit Polyclonal Antibody (Pab)

Catalog # AP57738

Product Information

Application	WB, IHC-P, IHC-F, IF, ICC
Primary Accession	Q9BSY9
Reactivity	Rat, Pig, Dog, Bovine
Host	Rabbit
Clonality	Polyclonal
Calculated MW	21444

Additional Information

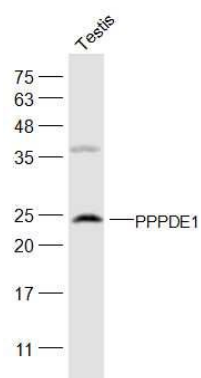
Gene ID	51029
Other Names	Deubiquitinase DESI2, 3.4.19.12, Desumoylating isopeptidase 2, DeSI-2, PPPDE peptidase domain-containing protein 1, Protein FAM152A, DESI2
Dilution	WB=1:500-2000,IHC-P=1:100-500,IHC-F=1:100-500,ICC=1:100-500,IF=1:100-500
Format	0.01M TBS(pH7.4) with 1% BSA, 0.09% (W/V) sodium azide and 50% Glyce
Storage	Store at -20 °C for one year. Avoid repeated freeze/thaw cycles. When reconstituted in sterile pH 7.4 0.01M PBS or diluent of antibody the antibody is stable for at least two weeks at 2-4 °C.

Protein Information

Name	DESI2
Function	Has deubiquitinating activity towards 'Lys-48'- and 'Lys-63'- linked polyubiquitin chains. Deubiquitinates 'Lys-48'-linked polyubiquitination of RPS7 leading to its stabilization (PubMed: 28483520). Exhibits palmitoyl protein thioesterase (S- depalmitoylation) activity towards synthetic substrates 4- methylumbelliferyl-6-S-palmitoyl-beta-D-glucopyranoside and S- depalmitoylation probe 5 (DPP-5) (PubMed: 35427157).
Cellular Location	Cytoplasm {ECO:0000250 UniProtKB:Q9D291}.

Images

Sample:



Testis (Mouse) Lysate at 40 ug
Primary: Anti-PPPDE1 (AP57738) at 1/300 dilution
Secondary: IRDye800CW Goat Anti-Rabbit IgG at 1/20000 dilution
Predicted band size: 23 kD
Observed band size: 23 kD

Please note: All products are 'FOR RESEARCH USE ONLY. NOT FOR USE IN DIAGNOSTIC OR THERAPEUTIC PROCEDURES'.