

DNCLI1 Polyclonal Antibody

Purified Rabbit Polyclonal Antibody (Pab)

Catalog # AP57771

Product Information

Application	WB, IHC-P, IHC-F, IF, ICC, E
Primary Accession	Q9Y6G9
Reactivity	Rat
Host	Rabbit
Clonality	Polyclonal
Calculated MW	56579
Physical State	Liquid
Immunogen	KLH conjugated synthetic peptide derived from human DNCLI1
Epitope Specificity	451-523/523
Isotype	IgG
Purity	affinity purified by Protein A
Buffer	Preservative: 0.02% Proclin300, Constituents: 1% BSA, 0.01M PBS, pH7.4.
Important Note	This product as supplied is intended for research use only, not for use in human, therapeutic or diagnostic applications.
Background Descriptions	DNCLI1 (Cytoplasmic dynein 1 light intermediate chain 1) is a 523 amino acid protein that consists of at least 3 heavy chains, 2 intermediate chains and 8 light chains. DNCLI1 may play a role in binding Dynein heavy chain to chromosomes or membranous organelles and also may regulate Dynein enzymatic activity by associating with heavy chains of the Dynein head.

Additional Information

Gene ID	51143
Other Names	Cytoplasmic dynein 1 light intermediate chain 1, LIC1, Dynein light chain A, DLC-A, Dynein light intermediate chain 1, cytosolic, DYNC1LI1, DNCLI1
Dilution	WB=1:500-2000,IHC-P=1:100-500,IHC-F=1:100-500,ICC=1:100-500,IF=1:100-500,ELISA=1:5000-10000
Format	0.01M TBS(pH7.4) with 1% BSA, 0.09% (W/V) sodium azide and 50% Glyce
Storage	Store at -20 °C for one year. Avoid repeated freeze/thaw cycles. When reconstituted in sterile pH 7.4 0.01M PBS or diluent of antibody the antibody is stable for at least two weeks at 2-4 °C.

Protein Information

Name	DYNC1LI1
-------------	----------

Synonyms

DNCLI1

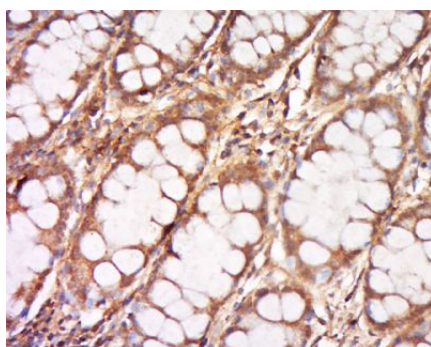
Function

Acts as one of several non-catalytic accessory components of the cytoplasmic dynein 1 complex that are thought to be involved in linking dynein to cargos and to adapter proteins that regulate dynein function. Cytoplasmic dynein 1 acts as a motor for the intracellular retrograde motility of vesicles and organelles along microtubules. May play a role in binding dynein to membranous organelles or chromosomes. Probably involved in the microtubule-dependent transport of pericentrin. Is required for progress through the spindle assembly checkpoint. The phosphorylated form appears to be involved in the selective removal of MAD1L1 and MAD1L2 but not BUB1B from kinetochores. Forms a functional Rab11/RAB11FIP3/dynein complex onto endosomal membrane that regulates the movement of peripheral sorting endosomes (SE) along microtubule tracks toward the microtubule organizing center/centrosome, generating the endosomal recycling compartment (ERC) (PubMed:[20026645](#)).

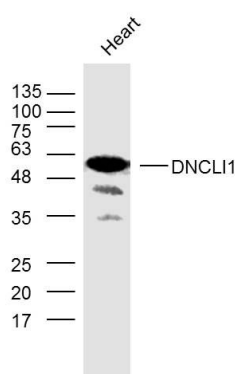
Cellular Location

Cytoplasm. Chromosome, centromere, kinetochore. Cytoplasm, cytoskeleton, spindle pole. Recycling endosome membrane. Note=During interphase, localized in vesicles continuously moving from peripheral sorting endosomes in the cell towards the pericentrosomal endosomal recycling compartment (ERC)

Images



Tissue/cell: Human cervical cancer; 4%
Paraformaldehyde-fixed and paraffin-embedded;
Antigen retrieval: citrate buffer (0.01M, pH 6.0), Boiling bathing for 15min; Block endogenous peroxidase by 3% Hydrogen peroxide for 30min; Blocking buffer (normal goat serum,C-0005) at 37°C for 20 min;
Incubation: Anti-DNCLI1 Polyclonal Antibody, Unconjugated(AP57771) 1:500, overnight at 4°C, followed by conjugation to the secondary antibody(SP-0023) and DAB(C-0010) staining



Sample:
Heart (Mouse) Lysate at 40 ug
Primary: Anti- DNCLI1 (AP57771) at 1/300 dilution
Secondary: IRDye800CW Goat Anti-Rabbit IgG at 1/20000 dilution
Predicted band size: 57 kD
Observed band size: 57 kD

Please note: All products are 'FOR RESEARCH USE ONLY. NOT FOR USE IN DIAGNOSTIC OR THERAPEUTIC PROCEDURES'.