

SNRPE Polyclonal Antibody

Purified Rabbit Polyclonal Antibody (Pab)

Catalog # AP57773

Product Information

Application	IHC-P, IHC-F, IF, ICC, E
Primary Accession	P62304
Reactivity	Pig, Bovine
Host	Rabbit
Clonality	Polyclonal
Calculated MW	10804
Physical State	Liquid
Immunogen	KLH conjugated synthetic peptide derived from human SNRPE
Epitope Specificity	51-92/92
Isotype	IgG
Purity	affinity purified by Protein A
Buffer	0.01M TBS (pH7.4) with 1% BSA, 0.02% Proclin300 and 50% Glycerol.
SUBCELLULAR LOCATION	Cytoplasm, cytosol. Nucleus. Note=SMN-mediated assembly into core snRNPs occurs in the cytosol before SMN-mediated transport to the nucleus to be included in spliceosomes.
SIMILARITY	Belongs to the snRNP Sm proteins family.
SUBUNIT	U1 snRNP is for instance composed of the 7 core Sm proteins SNRPB, SNRPD1, SNRPD2, SNRPD3, SNRPE, SNRPF and SNRPG that assemble in an heptameric protein ring on the Sm site of the small nuclear RNA to form the core snRNP, and at least three U1 snRNP-specific proteins SNRNP70/U1-70K, SNRPA/U1-A and SNRPC/U1-C. Component of the U11/U12 snRNPs that are part of the U12-type spliceosome. Component of the heptameric ring U7 snRNP complex, or U7 Sm protein core complex, at least composed of LSM10, LSM11, SNRPB, SNRPD3, SNRPE, SNRPF, SNRPG and U7 snRNA. Part of the SMN-Sm complex that contains SMN1, GEMIN2/SIP1, DDX20/GEMIN3, GEMIN4, GEMIN5, GEMIN6, GEMIN7, GEMIN8, STRAP/UNRIP and the Sm proteins SNRPB, SNRPD1, SNRPD2, SNRPD3, SNRPE, SNRPF and SNRPG; catalyzes core snRNPs assembly. Forms a 6S pICln-Sm complex composed of CLNS1A/pICln, SNRPD1, SNRPD2, SNRPE, SNRPF and SNRPG; ring-like structure where CLNS1A/pICln mimics additional Sm proteins and which is unable to assemble into the core snRNP.
DISEASE	Hypotrichosis 11 (HYPT11) [MIM:615059]: A form of hypotrichosis, a condition characterized by the presence of less than the normal amount of hair and abnormal hair follicles and shafts, which are thin and atrophic. The extent of scalp and body hair involvement can be very variable, within as well as between families. HYPT11 is characterized by scanty or absent eyebrows and a highly variable degree of alopecia since birth, ranging from slight thinning of scalp and axillary hair to complete loss of scalp and body hair. Pubic hair remains mainly unaffected. {ECO:0000269 PubMed:23246290}. Note=The disease is caused by mutations affecting the gene represented in this entry.
Important Note	This product as supplied is intended for research use only, not for use in human, therapeutic or diagnostic applications.

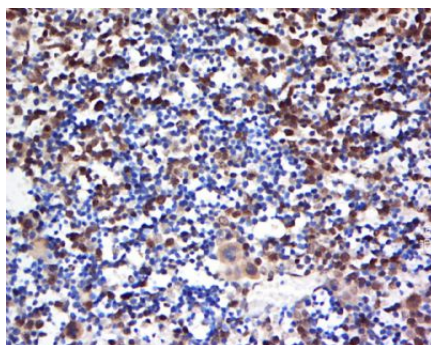
Additional Information

Gene ID	6635
Other Names	Small nuclear ribonucleoprotein E, snRNP-E, Sm protein E, Sm-E, SmE, SNRPE
Target/Specificity	Widely expressed. In scalp skin, it is present in the hair follicle, the epidermis, and the dermis.
Dilution	IHC-P=1:100-500,IHC-F=1:100-500,ICC=1:100-500,IF=1:100-500,ELISA=1:5000-10000
Format	0.01M TBS(pH7.4) with 1% BSA, 0.09% (W/V) sodium azide and 50% Glycerol
Storage	Store at -20 °C for one year. Avoid repeated freeze/thaw cycles. When reconstituted in sterile pH 7.4 0.01M PBS or diluent of antibody the antibody is stable for at least two weeks at 2-4 °C.

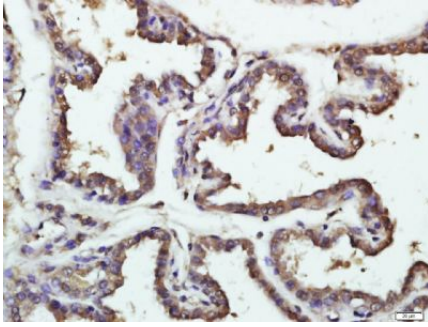
Protein Information

Name	SNRPE
Function	Plays a role in pre-mRNA splicing as a core component of the spliceosomal U1, U2, U4 and U5 small nuclear ribonucleoproteins (snRNPs), the building blocks of the spliceosome (PubMed: 11991638 , PubMed: 18984161 , PubMed: 19325628 , PubMed: 23246290 , PubMed: 23333303 , PubMed: 25555158 , PubMed: 26912367 , PubMed: 28076346 , PubMed: 28502770 , PubMed: 28781166 , PubMed: 32494006). Component of both the pre-catalytic spliceosome B complex and activated spliceosome C complexes (PubMed: 11991638 , PubMed: 28076346 , PubMed: 28502770 , PubMed: 28781166). As a component of the minor spliceosome, involved in the splicing of U12-type introns in pre-mRNAs (PubMed: 15146077). As part of the U7 snRNP it is involved in histone 3'-end processing (PubMed: 12975319).
Cellular Location	Cytoplasm, cytosol. Nucleus. Note=SMN-mediated assembly into core snRNPs occurs in the cytosol before SMN-mediated transport to the nucleus to be included in spliceosomes.
Tissue Location	Widely expressed. In scalp skin, it is present in the hair follicle, the epidermis, and the dermis

Images



Tissue/cell: mouse embryos tissue; 4%
Paraformaldehyde-fixed and paraffin-embedded;
Antigen retrieval: citrate buffer (0.01M, pH 6.0), Boiling
bathing for 15min; Block endogenous peroxidase by 3%
Hydrogen peroxide for 30min; Blocking buffer (normal
goat serum,C-0005) at 37°C for 20 min;
Incubation: Anti-SNRPE Polyclonal Antibody,
Unconjugated(AP57773) 1:500, overnight at 4°C, followed
by conjugation to the secondary antibody(SP-0023) and
DAB(C-0010) staining



Paraformaldehyde-fixed, paraffin embedded (mouse embryo); Antigen retrieval by boiling in sodium citrate buffer (pH6.0) for 15min; Block endogenous peroxidase by 3% hydrogen peroxide for 20 minutes; Blocking buffer (normal goat serum) at 37°C for 30min; Antibody incubation with (SNRPE) Polyclonal Antibody, Unconjugated (AP57773) at 1:500 overnight at 4°C, followed by a conjugated secondary (sp-0023) for 20 minutes and DAB staining.

Please note: All products are 'FOR RESEARCH USE ONLY. NOT FOR USE IN DIAGNOSTIC OR THERAPEUTIC PROCEDURES'.