

METTL21C Polyclonal Antibody

Purified Rabbit Polyclonal Antibody (Pab)

Catalog # AP57776

Product Information

Application	WB, IF, ICC
Primary Accession	Q5VZV1
Reactivity	Rat
Host	Rabbit
Clonality	Polyclonal
Calculated MW	29565
Physical State	Liquid
Immunogen	KLH conjugated synthetic peptide derived from human METTL21C
Epitope Specificity	31-130/264
Isotype	IgG
Purity	affinity purified by Protein A
Buffer	Preservative: 0.02% Proclin300, Constituents: 1% BSA, 0.01M PBS, pH7.4.
SIMILARITY	Belongs to the methyltransferase superfamily. METTL21 family.
Important Note	This product as supplied is intended for research use only, not for use in human, therapeutic or diagnostic applications.

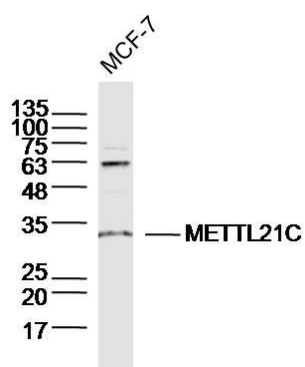
Additional Information

Gene ID	196541
Other Names	Protein-lysine methyltransferase METTL21C, 2.1.1.-, Methyltransferase-like protein 21C, METTL21C, C13orf39
Dilution	WB=1:500-2000, ICC=1:100-500, IF=1:100-500
Format	0.01M TBS(pH7.4) with 1% BSA, 0.09% (W/V) sodium azide and 50% Glyce
Storage	Store at -20 °C for one year. Avoid repeated freeze/thaw cycles. When reconstituted in sterile pH 7.4 0.01M PBS or diluent of antibody the antibody is stable for at least two weeks at 2-4 °C.

Protein Information

Name	METTL21C (HGNC:33717)
Synonyms	C13orf39
Function	Protein-lysine N-methyltransferase using S-adenosyl-L- methionine as methyl donor (PubMed: 22948820 , PubMed: 32611769). Mono-di and trimethylates 'Lys-943' of AARS1 (PubMed: 32611769).

Images



Sample: MCF-7 (Human) Cell Lysate at 40 ug
Primary: Anti-METTL21C (AP57776) at 1/300 dilution
Secondary: IRDye800CW Goat Anti-Rabbit IgG at 1/20000 dilution
Predicted band size: 30 kD
Observed band size: 30 kD

Please note: All products are 'FOR RESEARCH USE ONLY. NOT FOR USE IN DIAGNOSTIC OR THERAPEUTIC PROCEDURES'.