

# RAG1AP1 Polyclonal Antibody

Purified Rabbit Polyclonal Antibody (Pab)

Catalog # AP57810

## Product Information

---

<b>Application</b>	WB, IHC-P, IHC-F, IF, ICC, E
<b>Primary Accession</b>	<a href="#">Q9BRV3</a>
<b>Reactivity</b>	Rat
<b>Host</b>	Rabbit
<b>Clonality</b>	Polyclonal
<b>Calculated MW</b>	25030
<b>Physical State</b>	Liquid
<b>Immunogen</b>	KLH conjugated synthetic peptide derived from human RAG1AP1
<b>Epitope Specificity</b>	101-200/221
<b>Isotype</b>	IgG
<b>Purity</b>	affinity purified by Protein A
<b>Buffer</b>	0.01M TBS (pH7.4) with 1% BSA, 0.02% Proclin300 and 50% Glycerol.
<b>SUBCELLULAR LOCATION</b>	Golgi apparatus membrane. Cell membrane. May also localize to the endoplasmic reticulum.
<b>SIMILARITY</b>	Belongs to the SWEET sugar transporter family. Contains 2 MtN3/slv domains
<b>Important Note</b>	This product as supplied is intended for research use only, not for use in human, therapeutic or diagnostic applications.

## Additional Information

---

<b>Gene ID</b>	55974
<b>Other Names</b>	Sugar transporter SWEET1, HsSWEET1, RAG1-activating protein 1, Solute carrier family 50 member 1, Stromal cell protein, SLC50A1, RAG1AP1, SCP
<b>Target/Specificity</b>	Ubiquitously expressed with highest expression in oviduct, epididymis and intestine.
<b>Dilution</b>	WB=1:500-2000,IHC-P=1:100-500,IHC-F=1:100-500,ICC=1:100-500,IF=1:100-500,ELISA=1:5000-10000
<b>Format</b>	0.01M TBS(pH7.4) with 1% BSA, 0.09% (W/V) sodium azide and 50% Glyce
<b>Storage</b>	Store at -20 °C for one year. Avoid repeated freeze/thaw cycles. When reconstituted in sterile pH 7.4 0.01M PBS or diluent of antibody the antibody is stable for at least two weeks at 2-4 °C.

## Protein Information

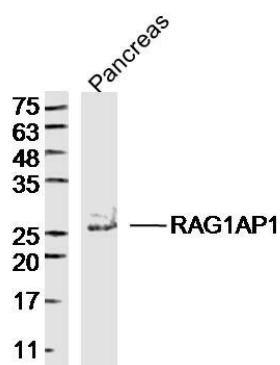
---

<b>Name</b>	SLC50A1
-------------	---------

<b>Synonyms</b>	RAG1AP1, SCP
<b>Function</b>	Mediates sugar transport across membranes. May stimulate V(D)J recombination by the activation of RAG1.
<b>Cellular Location</b>	Golgi apparatus membrane; Multi-pass membrane protein. Cell membrane; Multi-pass membrane protein. Note=May also localize to the endoplasmic reticulum.
<b>Tissue Location</b>	Ubiquitously expressed with highest expression in oviduct, epididymis and intestine.

## Images

---



Sample: Pancreas (Mouse) Lysate at 40 ug  
 Primary: Anti-RAG1AP1 (AP57810) at 1/300 dilution  
 Secondary: IRDye800CW Goat Anti-Rabbit IgG at 1/20000 dilution  
 Predicted band size: 25 kD  
 Observed band size: 25 kD

Please note: All products are 'FOR RESEARCH USE ONLY. NOT FOR USE IN DIAGNOSTIC OR THERAPEUTIC PROCEDURES'.