

PAG3/ASAP2 Polyclonal Antibody

Purified Rabbit Polyclonal Antibody (Pab)

Catalog # AP57818

Product Information

Application	WB, IHC-P, IHC-F, IF, ICC, E
Primary Accession	O43150
Reactivity	Rat, Pig, Dog, Bovine
Host	Rabbit
Clonality	Polyclonal
Calculated MW	111651

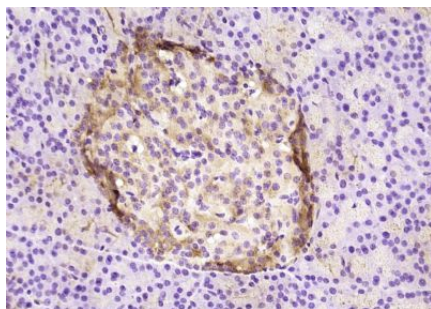
Additional Information

Gene ID	8853
Other Names	Arf-GAP with SH3 domain, ANK repeat and PH domain-containing protein 2, Development and differentiation-enhancing factor 2, Paxillin-associated protein with ARF GAP activity 3, PAG3, Pyk2 C-terminus-associated protein, PAP, ASAP2, DDEF2, KIAA0400
Dilution	WB=1:500-2000,IHC-P=1:100-500,IHC-F=1:100-500,ICC=1:100-500,IF=1:100-500,ELISA=1:5000-10000
Format	0.01M TBS(pH7.4) with 1% BSA, 0.09% (W/V) sodium azide and 50% Glyce
Storage	Store at -20 °C for one year. Avoid repeated freeze/thaw cycles. When reconstituted in sterile pH 7.4 0.01M PBS or diluent of antibody the antibody is stable for at least two weeks at 2-4 °C.

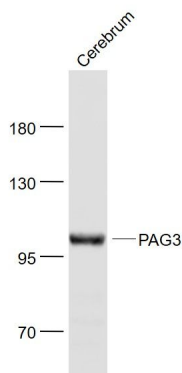
Protein Information

Name	ASAP2
Synonyms	DDEF2, KIAA0400
Function	Activates the small GTPases ARF1, ARF5 and ARF6. Regulates the formation of post-Golgi vesicles and modulates constitutive secretion. Modulates phagocytosis mediated by Fc gamma receptor and ARF6. Modulates PXN recruitment to focal contacts and cell migration.
Cellular Location	Cytoplasm. Golgi apparatus, Golgi stack membrane; Peripheral membrane protein. Cell membrane; Peripheral membrane protein. Note=Colocalizes with F-actin and ARF6 in phagocytic cups
Tissue Location	Detected in heart, brain, placenta, kidney, monocytes and pancreas.

Images



Paraformaldehyde-fixed, paraffin embedded (rat pancreas); Antigen retrieval by boiling in sodium citrate buffer (pH6.0) for 15min; Block endogenous peroxidase by 3% hydrogen peroxide for 20 minutes; Blocking buffer (normal goat serum) at 37°C for 30min; Antibody incubation with (PAG3 ASAP2) Polyclonal Antibody, Unconjugated (AP57818) at 1:200 overnight at 4°C, followed by operating according to SP Kit(Rabbit) (sp-0023) instructions and DAB staining.



Sample:

Cerebrum (Mouse) Lysate at 40 ug

Primary: Anti- PAG3/ASAP2 (AP57818) at 1/1000 dilution

Secondary: IRDye800CW Goat Anti-Rabbit IgG at 1/20000 dilution

Predicted band size: 112 kD

Observed band size: 110 kD

Please note: All products are 'FOR RESEARCH USE ONLY. NOT FOR USE IN DIAGNOSTIC OR THERAPEUTIC PROCEDURES'.