

# POU6F1/BRN5 Rabbit pAb

POU6F1/BRN5 Rabbit pAb

Catalog # AP57842

## Product Information

---

<b>Application</b>	IHC-P, IHC-F, IF
<b>Primary Accession</b>	<a href="#">Q14863</a>
<b>Reactivity</b>	Mouse
<b>Predicted</b>	Human, Rat, Dog, Pig, Horse, Rabbit, Sheep
<b>Host</b>	Rabbit
<b>Clonality</b>	Polyclonal
<b>Calculated MW</b>	63068
<b>Physical State</b>	Liquid
<b>Immunogen</b>	KLH conjugated synthetic peptide derived from human POU6F
<b>Epitope Specificity</b>	25-120/301
<b>Isotype</b>	IgG
<b>Purity</b>	affinity purified by Protein A
<b>Buffer</b>	0.01M TBS (pH7.4) with 1% BSA, 0.02% Proclin300 and 50% Glycerol.
<b>SUBCELLULAR LOCATION</b>	Nuclear.
<b>SIMILARITY</b>	Belongs to the POU transcription factor family. Class-6 subfamily. Contains 1 homeobox DNA-binding domain. Contains 1 POU-specific domain.
<b>Important Note</b>	This product as supplied is intended for research use only, not for use in human, therapeutic or diagnostic applications.
<b>Background Descriptions</b>	The POU6F1 gene encodes a protein that is part of a family of transcription factors which exhibit distinct temporal and spatial patterns of expression.

## Additional Information

---

<b>Gene ID</b>	5463
<b>Other Names</b>	POU domain, class 6, transcription factor 1, Brain-specific homeobox/POU domain protein 5, Brain-5, Brn-5, mPOU homeobox protein, POU6F1, BRN5, MPOU, TCFB1
<b>Target/Specificity</b>	In the embryo, expressed exclusively in the developing brain, whereas in the adult its expression is restricted to brain, heart, skeletal muscle and lung. In the brain, the highest expression levels are found in specific cell layers of the cortex, the olfactory bulb, the hippocampus and the cerebellum.
<b>Dilution</b>	IHC-P=1:100-500,IHC-F=1:100-500,IF=1:100-500
<b>Storage</b>	Store at -20 °C for one year. Avoid repeated freeze/thaw cycles. When reconstituted in sterile pH 7.4 0.01M PBS or diluent of antibody the antibody is stable for at least two weeks at 2-4 °C.

## Protein Information

---

<b>Name</b>	POU6F1
<b>Synonyms</b>	BRN5, MPOU, TCFB1
<b>Function</b>	Transcription factor that binds preferentially to a variant of the octamer motif (5'-ATGATAAT-3').
<b>Cellular Location</b>	Nucleus {ECO:0000255   PROSITE-ProRule:PRU00108, ECO:0000255   PROSITE-ProRule:PRU00530}
<b>Tissue Location</b>	In the embryo, expressed exclusively in the developing brain, whereas in the adult its expression is restricted to brain, heart, skeletal muscle and lung. In the brain, the highest expression levels are found in specific cell layers of the cortex, the olfactory bulb, the hippocampus and the cerebellum

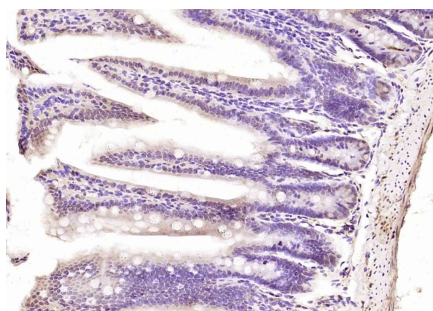
## Background

---

The POU6F1 gene encodes a protein that is part of a family of transcription factors which exhibit distinct temporal and spatial patterns of expression.

## Images

---



Paraformaldehyde-fixed, paraffin embedded (mouse intestine); Antigen retrieval by boiling in sodium citrate buffer (pH6.0) for 15min; Block endogenous peroxidase by 3% hydrogen peroxide for 20 minutes; Blocking buffer (normal goat serum) at 37°C for 30min; Antibody incubation with (POU6F1) Polyclonal Antibody, Unconjugated (AP57842) at 1:200 overnight at 4°C, followed by operating according to SP Kit(Rabbit) (sp-0023) instructions and DAB staining.

Please note: All products are 'FOR RESEARCH USE ONLY. NOT FOR USE IN DIAGNOSTIC OR THERAPEUTIC PROCEDURES'.