

PPIC Rabbit pAb

PPIC Rabbit pAb
Catalog # AP57848

Product Information

Application	IHC-P, IHC-F, IF
Primary Accession	P45877
Reactivity	Mouse
Predicted	Human, Dog, Pig, Horse, Sheep
Host	Rabbit
Clonality	Polyclonal
Calculated MW	22763
Physical State	Liquid
Immunogen	KLH conjugated synthetic peptide derived from human PPIC
Epitope Specificity	121-212/212
Isotype	IgG
Purity	affinity purified by Protein A
Buffer	0.01M TBS (pH7.4) with 1% BSA, 0.02% Proclin300 and 50% Glycerol.
SUBCELLULAR LOCATION	Cytoplasm.
SIMILARITY	Belongs to the cyclophilin-type PPIase family. Contains 1 PPIase cyclophilin-type domain.
Important Note	This product as supplied is intended for research use only, not for use in human, therapeutic or diagnostic applications.
Background Descriptions	The protein encoded by this gene is a member of the peptidyl-prolyl cis-trans isomerase (PPIase) family. PPIases catalyze the cis-trans isomerization of proline imidic peptide bonds in oligopeptides and accelerate the folding of proteins. Similar to other PPIases, this protein can bind immunosuppressant cyclosporin A. [provided by RefSeq, Jul 2008]

Additional Information

Gene ID	5480
Other Names	Peptidyl-prolyl cis-trans isomerase C, PPIase C, 5.2.1.8, Cyclophilin C, Rotamase C, PPIC (HGNC:9256), CYPC
Dilution	IHC-P=1:100-500,IHC-F=1:100-500,IF=1:100-500
Storage	Store at -20 °C for one year. Avoid repeated freeze/thaw cycles. When reconstituted in sterile pH 7.4 0.01M PBS or diluent of antibody the antibody is stable for at least two weeks at 2-4 °C.

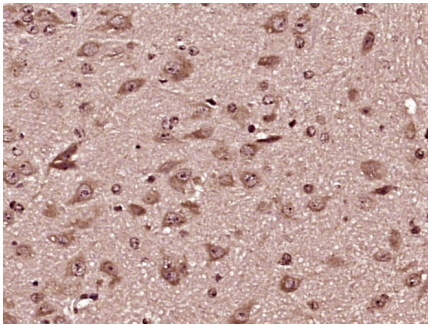
Protein Information

Name	PPIC (HGNC:9256)
Synonyms	CYPC
Function	PPIase that catalyzes the cis-trans isomerization of proline imidic peptide bonds in oligopeptides and may therefore assist protein folding.
Cellular Location	Cytoplasm {ECO:0000250 UniProtKB:P30412}.
Tissue Location	Expressed in kidney, skeletal muscle, pancreas, heart, lung, liver and to a lower extent in brain

Background

The protein encoded by this gene is a member of the peptidyl-prolyl cis-trans isomerase (PPIase)) family. PPIases catalyze the cis-trans isomerization of proline imidic peptide bonds in oligopeptides and accelerate the folding of proteins. Similar to other PPIases, this protein can bind immunosuppressant cyclosporin A. [provided by RefSeq, Jul 2008]

Images



Paraformaldehyde-fixed, paraffin embedded (mouse brain tissue); Antigen retrieval by boiling in sodium citrate buffer (pH6.0) for 15min; Block endogenous peroxidase by 3% hydrogen peroxide for 20 minutes; Blocking buffer (normal goat serum) at 37°C for 30min; Antibody incubation with (PPIC) Polyclonal Antibody, Unconjugated (AP57848) at 1:400 overnight at 4°C, followed by operating according to SP Kit(Rabbit) (sp-0023) instructions and DAB staining.

Please note: All products are 'FOR RESEARCH USE ONLY. NOT FOR USE IN DIAGNOSTIC OR THERAPEUTIC PROCEDURES'.