

RABGGTA Rabbit pAb

RABGGTA Rabbit pAb

Catalog # AP57862

Product Information

Application	IHC-P, IHC-F, IF
Primary Accession	Q92696
Reactivity	Mouse
Predicted	Human, Rat, Pig
Host	Rabbit
Clonality	Polyclonal
Calculated MW	65072
Physical State	Liquid
Immunogen	KLH conjugated synthetic peptide derived from human RABGGTA
Epitope Specificity	131-330/567
Isotype	IgG
Purity	affinity purified by Protein A
Buffer	Preservative: 0.02% Proclin300, Constituents: 1% BSA, 0.01M PBS, pH7.4.
SIMILARITY	Belongs to the protein prenyltransferase subunit alpha family. Contains 5 LRR (leucine-rich) repeats. Contains 6 PFTA repeats.
Important Note	This product as supplied is intended for research use only, not for use in human, therapeutic or diagnostic applications.
Background Descriptions	RABGGTA (Rab Geranylgeranyltransferase Subunit Alpha) is a Protein Coding gene. Diseases associated with RABGGTA include Choroideremia. Among its related pathways are Gene Expression and Signaling events mediated by PRL. Gene Ontology (GO) annotations related to this gene include Rab GTPase binding and protein prenyltransferase activity.

Additional Information

Gene ID	5875
Other Names	Geranylgeranyl transferase type-2 subunit alpha, 2.5.1.60, Geranylgeranyl transferase type II subunit alpha, Rab geranyl-geranyltransferase subunit alpha, Rab GG transferase alpha, Rab GGTase alpha, Rab geranylgeranyltransferase subunit alpha, RABGGTA
Dilution	IHC-P=1:100-500,IHC-F=1:100-500,IF=1:100-500
Storage	Store at -20 °C for one year. Avoid repeated freeze/thaw cycles. When reconstituted in sterile pH 7.4 0.01M PBS or diluent of antibody the antibody is stable for at least two weeks at 2-4 °C.

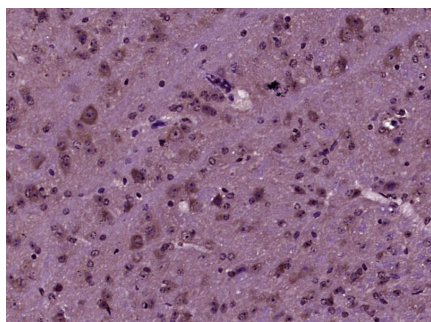
Protein Information

Name	RABGGTA
Function	Catalyzes the transfer of a geranylgeranyl moiety from geranylgeranyl diphosphate to both cysteines of Rab proteins with the C-terminal sequence -XXCC, -XCXC and -CCXX, such as RAB1A, RAB3A, RAB5A and RAB7A.

Background

RABGGTA (Rab Geranylgeranyltransferase Subunit Alpha) is a Protein Coding gene. Diseases associated with RABGGTA include Choroideremia. Among its related pathways are Gene Expression and Signaling events mediated by PRL. Gene Ontology (GO) annotations related to this gene include Rab GTPase binding and protein prenyltransferase activity.

Images



Paraformaldehyde-fixed, paraffin embedded (Mouse brain); Antigen retrieval by boiling in sodium citrate buffer (pH6.0) for 15min; Block endogenous peroxidase by 3% hydrogen peroxide for 20 minutes; Blocking buffer (normal goat serum) at 37°C for 30min; Antibody incubation with (RABGGTA) Polyclonal Antibody, Unconjugated (AP57862) at 1:400 overnight at 4°C, followed by operating according to SP Kit(Rabbit) (sp-0023) instructions and DAB staining.

Please note: All products are 'FOR RESEARCH USE ONLY. NOT FOR USE IN DIAGNOSTIC OR THERAPEUTIC PROCEDURES'.