

# SERINC1 Polyclonal Antibody

Purified Rabbit Polyclonal Antibody (Pab)

Catalog # AP57869

## Product Information

---

<b>Application</b>	WB, IHC-P, IHC-F, IF, ICC
<b>Primary Accession</b>	<a href="#">Q9NRX5</a>
<b>Reactivity</b>	Rat, Pig, Dog, Bovine
<b>Host</b>	Rabbit
<b>Clonality</b>	Polyclonal
<b>Calculated MW</b>	50495
<b>Physical State</b>	Liquid
<b>Immunogen</b>	KLH conjugated synthetic peptide derived from human SERINC1
<b>Epitope Specificity</b>	131-230/453
<b>Isotype</b>	IgG
<b>Purity</b>	affinity purified by Protein A
<b>Buffer</b>	Preservative: 0.02% Proclin300, Constituents: 1% BSA, 0.01M PBS, pH7.4.
<b>SUBCELLULAR LOCATION</b>	Endoplasmic reticulum membrane.
<b>SIMILARITY</b>	Belongs to the TDE1 family.
<b>Important Note</b>	This product as supplied is intended for research use only, not for use in human, therapeutic or diagnostic applications.

## Additional Information

---

<b>Gene ID</b>	57515
<b>Other Names</b>	Serine incorporator 1, Tumor differentially expressed protein 1-like, Tumor differentially expressed protein 2, SERINC1, KIAA1253, TDE1L, TDE2
<b>Dilution</b>	WB=1:500-2000,IHC-P=1:100-500,IHC-F=1:100-500,ICC=1:100-500,IF=1:100-500
<b>Format</b>	0.01M TBS(pH7.4) with 1% BSA, 0.09% (W/V) sodium azide and 50% Glyce
<b>Storage</b>	Store at -20 °C for one year. Avoid repeated freeze/thaw cycles. When reconstituted in sterile pH 7.4 0.01M PBS or diluent of antibody the antibody is stable for at least two weeks at 2-4 °C.

## Protein Information

---

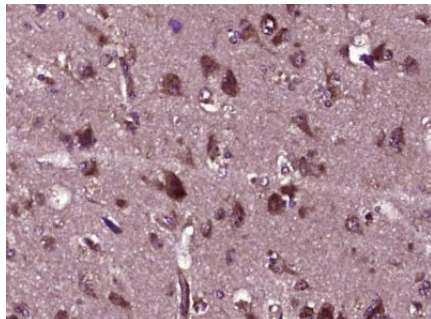
<b>Name</b>	SERINC1
<b>Synonyms</b>	KIAA1253, TDE1L, TDE2
<b>Function</b>	Enhances the incorporation of serine into phosphatidylserine and

sphingolipids.

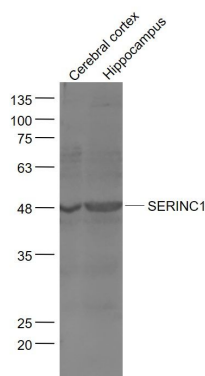
## Cellular Location

Endoplasmic reticulum membrane {ECO:0000250 | UniProtKB:Q7TNK0};  
Multi-pass membrane protein {ECO:0000250 | UniProtKB:Q7TNK0}

## Images



Paraformaldehyde-fixed, paraffin embedded (human brain glioma); Antigen retrieval by boiling in sodium citrate buffer (pH6.0) for 15min; Block endogenous peroxidase by 3% hydrogen peroxide for 20 minutes; Blocking buffer (normal goat serum) at 37°C for 30min; Antibody incubation with (SERINC1) Polyclonal Antibody, Unconjugated (AP57869) at 1:400 overnight at 4°C, followed by operating according to SP Kit(Rabbit) (sp-0023) instructions and DAB staining.



### Sample:

Cerebral cortex (Mouse) Lysate at 40 ug

Hippocampus (Mouse) Lysate at 40 ug

Primary: Anti- SERINC1 (AP57869) at 1/1000 dilution

Secondary: IRDye800CW Goat Anti-Rabbit IgG at 1/20000 dilution

Predicted band size: 50 kD

Observed band size: 48 kD

Please note: All products are 'FOR RESEARCH USE ONLY. NOT FOR USE IN DIAGNOSTIC OR THERAPEUTIC PROCEDURES'.