

## RCN3 Antibody (Center)

Affinity Purified Rabbit Polyclonal Antibody (Pab)

Catalog # AP5788c

### Product Information

---

|                   |   |
|-------------------|---|
| Application       | FC, WB, E   |
| Primary Accession | <a href="#">Q96D15</a>  |
| Other Accession   | <a href="#">Q8BH97</a> , <a href="#">Q2KJ39</a> , <a href="#">NP_065701.2</a> |
| Reactivity        | Human, Rat, Mouse   |
| Predicted         | Bovine  |
| Host              | Rabbit  |
| Clonality         | Polyclonal  |
| Isotype           | Rabbit IgG  |
| Clone Names       | RB27325   |
| Calculated MW     | 37493   |
| Antigen Region    | 134-163   |

### Additional Information

---

|                    |  |
|--------------------|--|
| Gene ID            | 57333  |
| Other Names        | Reticulocalbin-3, EF-hand calcium-binding protein RLP49, RCN3  |
| Target/Specificity | This RCN3 antibody is generated from rabbits immunized with a KLH conjugated synthetic peptide between 134-163 amino acids from the Central region of human RCN3.            |
| Dilution           | FC~~1:10~50 WB~~1:1000 E~~Use at an assay dependent concentration.   |
| Format             | Purified polyclonal antibody supplied in PBS with 0.09% (W/V) sodium azide. This antibody is purified through a protein A column, followed by peptide affinity purification. |
| Storage            | Maintain refrigerated at 2-8°C for up to 2 weeks. For long term storage store at -20°C in small aliquots to prevent freeze-thaw cycles.                                      |
| Precautions        | RCN3 Antibody (Center) is for research use only and not for use in diagnostic or therapeutic procedures.   |

### Protein Information

---

|          |  |
|----------|--|
| Name     | RCN3 ( <a href="#">HGNC:21145</a> )  |
| Function | Probable molecular chaperone assisting protein biosynthesis and transport in the endoplasmic reticulum (PubMed: <a href="#">16433634</a> , PubMed: <a href="#">28939891</a> ). Required for the proper biosynthesis and transport of pulmonary |

surfactant-associated protein A/SP-A, pulmonary surfactant- associated protein D/SP-D and the lipid transporter ABCA3 (By similarity). By regulating both the proper expression and the degradation through the endoplasmic reticulum-associated protein degradation pathway of these proteins plays a crucial role in pulmonary surfactant homeostasis (By similarity). Has an anti-fibrotic activity by negatively regulating the secretion of type I and type III collagens (PubMed:[28939891](#)). This calcium-binding protein also transiently associates with immature PCSK6 and regulates its secretion (PubMed:[16433634](#)).

**Cellular Location** Endoplasmic reticulum lumen

**Tissue Location** Widely expressed..

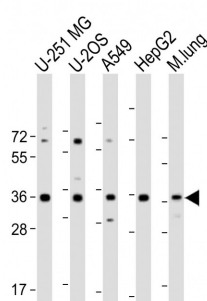
## Background

Calcipressin 3 inhibits calcineurin dependent transcriptional responses by binding to the catalytic domain of calcineurin A, and may play a role during central nervous system development. Highest expression occurs in heart, skeletal muscle kidney, liver and peripheral blood leukocytes.

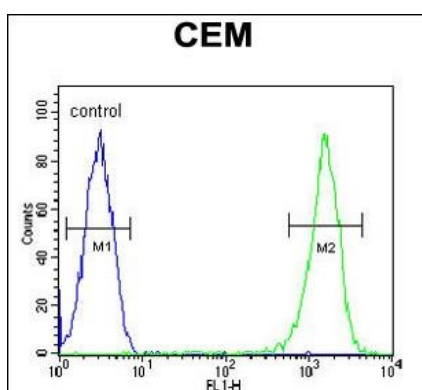
## References

Tsuji, A., et al. Biochem. J. 396(1):51-59(2006)  
 Clark, H.F., et al. Genome Res. 13(10):2265-2270(2003)  
 Hu, R.M., et al. Proc. Natl. Acad. Sci. U.S.A. 97(17):9543-9548(2000)

## Images



All lanes : Anti-RCN3 Antibody (Center) at 1:2000 dilution  
 Lane 1: U-251 MG whole cell lysate Lane 2: U-2OS whole cell lysate Lane 3: A549 whole cell lysate Lane 4: HepG2 whole cell lysate Lane 5: Mouse lung lysate  
 Lysates/proteins at 20 µg per lane. Secondary Goat Anti-Rabbit IgG, (H+L), Peroxidase conjugated at 1/10000 dilution. Predicted band size : 37 kDa Blocking/Dilution buffer: 5% NFDM/TBST.



RCN3 Antibody (Center) (Cat. #AP5788c) flow cytometric analysis of CEM cells (right histogram) compared to a negative control cell (left histogram). FITC-conjugated goat-anti-rabbit secondary antibodies were used for the analysis.

## Citations

- [Reticulocalbin 3 deficiency in alveolar epithelium attenuated LPS-induced ALI via NFκB signaling](#)

Please note: All products are 'FOR RESEARCH USE ONLY. NOT FOR USE IN DIAGNOSTIC OR THERAPEUTIC PROCEDURES'.