

SDR-O Polyclonal Antibody

Purified Rabbit Polyclonal Antibody (Pab)

Catalog # AP57892

Product Information

Application	IHC-P, IHC-F, IF, ICC
Primary Accession	Q8NEX9
Reactivity	Rat, Pig
Host	Rabbit
Clonality	Polyclonal
Calculated MW	35263
Physical State	Liquid
Immunogen	KLH conjugated synthetic peptide derived from human SDR-O
Epitope Specificity	181-280/313
Isotype	IgG
Purity	affinity purified by Protein A
Buffer	Preservative: 0.02% Proclin300, Constituents: 1% BSA, 0.01M PBS, pH7.4.
SUBCELLULAR LOCATION	Cytoplasm. Granular distribution in the whole cell.
SIMILARITY	Belongs to the short-chain dehydrogenases/reductases (SDR) family.
Important Note	This product as supplied is intended for research use only, not for use in human, therapeutic or diagnostic applications.

Additional Information

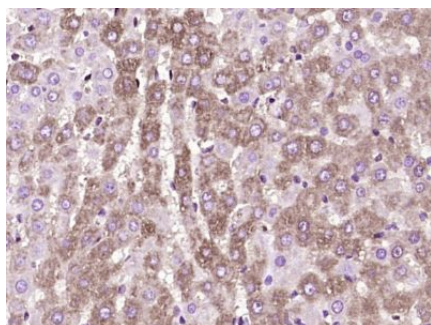
Gene ID	121214
Other Names	Short-chain dehydrogenase/reductase family 9C member 7, 1.1.1.-, Orphan short-chain dehydrogenase/reductase, SDR-O, RDH-S, SDR9C7, RDHS, SDRO
Target/Specificity	Highly expressed in liver.
Dilution	IHC-P=1:100-500,IHC-F=1:100-500,ICC=1:100-500,IF=1:100-500
Format	0.01M TBS(pH7.4) with 1% BSA, 0.09% (W/V) sodium azide and 50% Glyce
Storage	Store at -20 °C for one year. Avoid repeated freeze/thaw cycles. When reconstituted in sterile pH 7.4 0.01M PBS or diluent of antibody the antibody is stable for at least two weeks at 2-4 °C.

Protein Information

Name	SDR9C7
Synonyms	RDHS, SDRO

Function	Plays a crucial role in the formation of the epidermal permeability barrier (PubMed: 31671075). Catalyzes the NAD ⁺ -dependent dehydrogenation of the linoleate 9,10-trans-epoxy-11E-13-alcohol esterified in omega-O-acylceramides (such as in N-[omega-(9R,10R)-epoxy-(13R)-hydroxy-(11E)-octadecenoyloxy]-acylsphing-4E-enine) to the corresponding 13-ketone, the reactive moiety required for binding of epidermal ceramides to proteins (PubMed: 31671075). Displays weak conversion of all-trans-retinal to all-trans-retinol in the presence of NADH. Has apparently no steroid dehydrogenase activity (PubMed: 19703561).
Cellular Location	Cytoplasm. Note=Granular distribution in the whole cell
Tissue Location	Expressed in the skin (PubMed:28173123). Expressed in granular and cornified layers of the epidermis (at protein level) (PubMed:28173123). Highly expressed in liver (PubMed:12234675)

Images



Paraformaldehyde-fixed, paraffin embedded (rat liver tissue); Antigen retrieval by boiling in sodium citrate buffer (pH6.0) for 15min; Block endogenous peroxidase by 3% hydrogen peroxide for 20 minutes; Blocking buffer (normal goat serum) at 37°C for 30min; Antibody incubation with (SDR-O) Polyclonal Antibody, Unconjugated (AP57892) at 1:400 overnight at 4°C, followed by operating according to SP Kit(Rabbit) (sp-0023) instructions and DAB staining.

Please note: All products are 'FOR RESEARCH USE ONLY. NOT FOR USE IN DIAGNOSTIC OR THERAPEUTIC PROCEDURES'.