

# SDS/Serine dehydratase Rabbit pAb

SDS/Serine dehydratase Rabbit pAb

Catalog # AP57894

## Product Information

---

<b>Application</b>	WB
<b>Primary Accession</b>	<a href="#">P20132</a>
<b>Reactivity</b>	Human
<b>Predicted</b>	Mouse, Rat, Rabbit, Sheep
<b>Host</b>	Rabbit
<b>Clonality</b>	Polyclonal
<b>Calculated MW</b>	34625
<b>Physical State</b>	Liquid
<b>Immunogen</b>	KLH conjugated synthetic peptide derived from human SDS/Serine dehydratase
<b>Epitope Specificity</b>	201-300/328
<b>Isotype</b>	IgG
<b>Purity</b>	affinity purified by Protein A
<b>Buffer</b>	Preservative: 0.02% Proclin300, Constituents: 1% BSA, 0.01M PBS, pH7.4.
<b>SUBCELLULAR LOCATION</b>	Cytoplasm.
<b>SIMILARITY</b>	Belongs to the serine/threonine dehydratase family.
<b>Important Note</b>	This product as supplied is intended for research use only, not for use in human, therapeutic or diagnostic applications.
<b>Background Descriptions</b>	This gene encodes one of three enzymes that are involved in metabolizing serine and glycine. L-serine dehydratase converts L-serine to pyruvate and ammonia and requires pyridoxal phosphate as a cofactor. The encoded protein can also metabolize threonine to NH <sub>4</sub> <sup>+</sup> and 2-ketobutyrate. The encoded protein is found predominantly in the liver. [provided by RefSeq, Jul 2008]

## Additional Information

---

<b>Gene ID</b>	10993
<b>Other Names</b>	L-serine dehydratase/L-threonine deaminase, SDH, 4.3.1.17, Hepatic serine dehydratase, hSDH, L-serine deaminase, L-threonine dehydratase, TDH, 4.3.1.19, SDS, SDH
<b>Dilution</b>	WB=1:500-2000
<b>Storage</b>	Store at -20 °C for one year. Avoid repeated freeze/thaw cycles. When reconstituted in sterile pH 7.4 0.01M PBS or diluent of antibody the antibody is stable for at least two weeks at 2-4 °C.

## Protein Information

---

<b>Name</b>	SDS
<b>Synonyms</b>	SDH
<b>Function</b>	Catalyzes the pyridoxal-phosphate-dependent dehydrative deamination of L-threonine and L-serine to ammonia and alpha- ketobutyrate and pyruvate, respectively.
<b>Cellular Location</b>	Cytoplasm {ECO:0000250   UniProtKB:P09367}.
<b>Tissue Location</b>	Predominantly expressed in the perivenous regions of the liver.

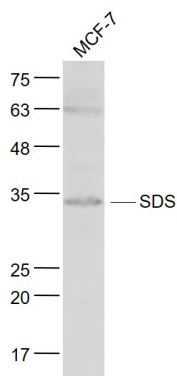
## Background

---

This gene encodes one of three enzymes that are involved in metabolizing serine and glycine. L-serine dehydratase converts L-serine to pyruvate and ammonia and requires pyridoxal phosphate as a cofactor. The encoded protein can also metabolize threonine to NH<sub>4</sub><sup>+</sup> and 2-ketobutyrate. The encoded protein is found predominantly in the liver. [provided by RefSeq, Jul 2008]

## Images

---



Sample:  
MCF-7(Human) Cell Lysate at 30 ug  
Primary: Anti- SDS/Serine dehydratase (AP57894) at 1/1000 dilution  
Secondary: IRDye800CW Goat Anti-Rabbit IgG at 1/20000 dilution  
Predicted band size: 35 kD  
Observed band size: 34 kD

Please note: All products are 'FOR RESEARCH USE ONLY. NOT FOR USE IN DIAGNOSTIC OR THERAPEUTIC PROCEDURES'.