

# RAP1GAP2 Polyclonal Antibody

Purified Rabbit Polyclonal Antibody (Pab)

Catalog # AP57905

## Product Information

<b>Application</b>	WB, IHC-P, IHC-F, IF, ICC, E
<b>Primary Accession</b>	<a href="#">Q684P5</a>
<b>Reactivity</b>	Rat
<b>Host</b>	Rabbit
<b>Clonality</b>	Polyclonal
<b>Calculated MW</b>	80056
<b>Physical State</b>	Liquid
<b>Immunogen</b>	KLH conjugated synthetic peptide derived from human RAP1GAP2
<b>Epitope Specificity</b>	651-730/730
<b>Isotype</b>	IgG
<b>Purity</b>	affinity purified by Protein A
<b>Buffer</b>	Preservative: 0.02% Proclin300, Constituents: 1% BSA, 0.01M PBS, pH7.4.
<b>SIMILARITY</b>	Contains 1 RanBD1 domain.
<b>Important Note</b>	This product as supplied is intended for research use only, not for use in human, therapeutic or diagnostic applications.
<b>Background Descriptions</b>	This gene encodes a GTPase-activating protein that activates the small guanine-nucleotide-binding protein Rap1 in platelets. The protein interacts with synaptotagmin-like protein 1 and Rab27 and regulates secretion of dense granules from platelets at sites of endothelial damage. Multiple transcript variants encoding different isoforms have been found for this gene. [provided by RefSeq, Sep 2009]

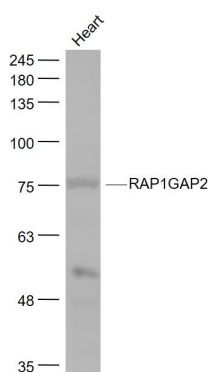
## Additional Information

<b>Gene ID</b>	23108
<b>Other Names</b>	Rap1 GTPase-activating protein 2, Rap1GAP2, GTPase-activating Rap/Ran-GAP domain-like protein 4, RAP1GAP2, GARNL4, KIAA1039, RAP1GA2
<b>Target/Specificity</b>	Cytoplasmic; perinuclear region.
<b>Dilution</b>	WB=1:500-2000,IHC-P=1:100-500,IHC-F=1:100-500,ICC=1:100-500,IF=1:100-500,ELISA=1:5000-10000
<b>Format</b>	0.01M TBS(pH7.4) with 1% BSA, 0.09% (W/V) sodium azide and 50% Glyce
<b>Storage</b>	Store at -20 °C for one year. Avoid repeated freeze/thaw cycles. When reconstituted in sterile pH 7.4 0.01M PBS or diluent of antibody the antibody is stable for at least two weeks at 2-4 °C.

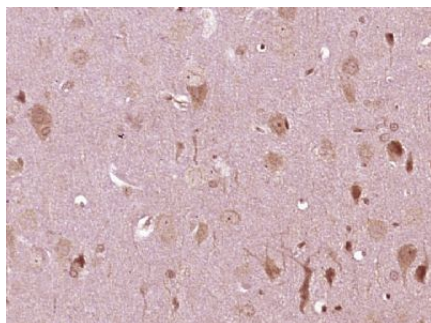
## Protein Information

<b>Name</b>	RAP1GAP2
<b>Synonyms</b>	GARNL4, KIAA1039, RAP1GA2
<b>Function</b>	GTPase activator for the nuclear Ras-related regulatory protein RAP-1A (KREV-1), converting it to the putatively inactive GDP- bound state.
<b>Cellular Location</b>	Cytoplasm. Cytoplasm, perinuclear region
<b>Tissue Location</b>	Isoform 1 and isoform 2 are expressed in platelets with isoform 2 being the predominant form. Expressed in lymphocytes, heart, testis and pancreas.

## Images



Sample:  
Heart (Mouse) Lysate at 40 ug  
Primary: Anti- RAP1GAP2 (AP57905) at 1/1000 dilution  
Secondary: IRDye800CW Goat Anti-Rabbit IgG at 1/20000 dilution  
Predicted band size: 80 kD  
Observed band size: 76 kD



Paraformaldehyde-fixed, paraffin embedded (rat brain tissue); Antigen retrieval by boiling in sodium citrate buffer (pH6.0) for 15min; Block endogenous peroxidase by 3% hydrogen peroxide for 20 minutes; Blocking buffer (normal goat serum) at 37°C for 30min; Antibody incubation with (RAP1GAP2) Polyclonal Antibody, Unconjugated (AP57905) at 1:400 overnight at 4°C, followed by operating according to SP Kit(Rabbit) (sp-0023) instructions and DAB staining.

Please note: All products are 'FOR RESEARCH USE ONLY. NOT FOR USE IN DIAGNOSTIC OR THERAPEUTIC PROCEDURES'.