

RAPGEFL1 Polyclonal Antibody

Purified Rabbit Polyclonal Antibody (Pab)

Catalog # AP57906

Product Information

Application	IHC-P, IHC-F, IF, ICC, E
Primary Accession	Q9UHV5
Reactivity	Pig, Bovine
Host	Rabbit
Clonality	Polyclonal
Calculated MW	73265
Physical State	Liquid
Immunogen	KLH conjugated synthetic peptide derived from human RAPGEFL1
Epitope Specificity	501-600/662
Isotype	IgG
Purity	affinity purified by Protein A
Buffer	Preservative: 0.02% Proclin300, Constituents: 1% BSA, 0.01M PBS, pH7.4.
SIMILARITY	Contains 1 Ras-GEF domain.
Important Note	This product as supplied is intended for research use only, not for use in human, therapeutic or diagnostic applications.

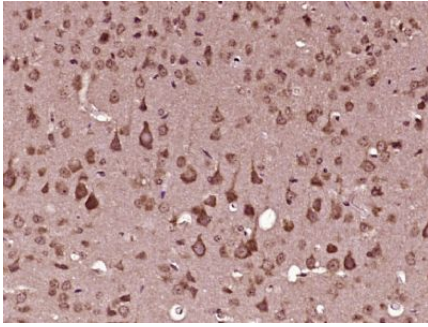
Additional Information

Gene ID	51195
Other Names	Rap guanine nucleotide exchange factor-like 1, Link guanine nucleotide exchange factor II, Link GEFII, RAPGEFL1
Dilution	IHC-P=1:100-500,IHC-F=1:100-500,ICC=1:100-500,IF=1:100-500,ELISA=1:5000-10000
Format	0.01M TBS(pH7.4) with 1% BSA, 0.09% (W/V) sodium azide and 50% Glyce
Storage	Store at -20 °C for one year. Avoid repeated freeze/thaw cycles. When reconstituted in sterile pH 7.4 0.01M PBS or diluent of antibody the antibody is stable for at least two weeks at 2-4 °C.

Protein Information

Name	RAPGEFL1
Function	Probable guanine nucleotide exchange factor (GEF).

Images



Paraformaldehyde-fixed, paraffin embedded (mouse brain tissue); Antigen retrieval by boiling in sodium citrate buffer (pH6.0) for 15min; Block endogenous peroxidase by 3% hydrogen peroxide for 20 minutes; Blocking buffer (normal goat serum) at 37°C for 30min; Antibody incubation with (RAPGEFL1) Polyclonal Antibody, Unconjugated (AP57906) at 1:400 overnight at 4°C, followed by operating according to SP Kit(Rabbit) (sp-0023) instructions and DAB staining.

Please note: All products are 'FOR RESEARCH USE ONLY. NOT FOR USE IN DIAGNOSTIC OR THERAPEUTIC PROCEDURES'.