

RASL10B Polyclonal Antibody

Purified Rabbit Polyclonal Antibody (Pab)

Catalog # AP57909

Product Information

Application	WB, IHC-P, IHC-F, IF, ICC, E
Primary Accession	Q96S79
Reactivity	Rat, Dog, Bovine
Host	Rabbit
Clonality	Polyclonal
Calculated MW	23229
Physical State	Liquid
Immunogen	KLH conjugated synthetic peptide derived from human RASL10B
Epitope Specificity	101-203/203
Isotype	IgG
Purity	affinity purified by Protein A
Buffer	Preservative: 0.02% Proclin300, Constituents: 1% BSA, 0.01M PBS, pH7.4.
SUBCELLULAR LOCATION	Cell membrane; Lipid-anchor; Cytoplasmic side.
SIMILARITY	Belongs to the small GTPase superfamily. Ras family.
Important Note	This product as supplied is intended for research use only, not for use in human, therapeutic or diagnostic applications.
Background Descriptions	Belongs to the small GTPase superfamily. Ras family.

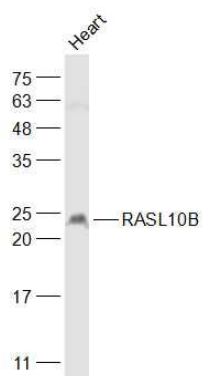
Additional Information

Gene ID	91608
Other Names	Ras-like protein family member 10B, 3.6.5.2, Ras-like protein VTS58635, Ras-related protein 17, RRP17, RASL10B
Target/Specificity	Expressed at high levels in skeletal muscle and, at much lower levels, in heart, brain and pancreas.
Dilution	WB=1:500-2000,IHC-P=1:100-500,IHC-F=1:100-500,ICC=1:100-500,IF=1:100-500,ELISA=1:5000-10000
Format	0.01M TBS(pH7.4) with 1% BSA, 0.09% (W/V) sodium azide and 50% Glyce
Storage	Store at -20 °C for one year. Avoid repeated freeze/thaw cycles. When reconstituted in sterile pH 7.4 0.01M PBS or diluent of antibody the antibody is stable for at least two weeks at 2-4 °C.

Protein Information

Name	RASL10B
Function	May facilitate the release of atrial natriuretic peptide by cardiomyocytes and hence play a role in the regulation of arterial pressure.
Cellular Location	Cell membrane; Lipid-anchor; Cytoplasmic side
Tissue Location	Expressed at high levels in skeletal muscle and, at much lower levels, in heart, brain and pancreas

Images



Sample:

Heart (Mouse) Lysate at 40 ug

Primary: Anti-RASL10B (AP57909) at 1/1000 dilution

Secondary: IRDye800CW Goat Anti-Rabbit IgG at 1/20000 dilution

Predicted band size: 23 kD

Observed band size: 23 kD

Please note: All products are 'FOR RESEARCH USE ONLY. NOT FOR USE IN DIAGNOSTIC OR THERAPEUTIC PROCEDURES'.