

# SH3BGRL3 Rabbit pAb

SH3BGRL3 Rabbit pAb

Catalog # AP57911

## Product Information

---

<b>Application</b>	IHC-P, IHC-F, IF
<b>Primary Accession</b>	<a href="#">Q9H299</a>
<b>Reactivity</b>	Rat
<b>Predicted</b>	Human, Dog, Horse, Rabbit, Sheep
<b>Host</b>	Rabbit
<b>Clonality</b>	Polyclonal
<b>Calculated MW</b>	10438
<b>Physical State</b>	Liquid
<b>Immunogen</b>	KLH conjugated synthetic peptide derived from human SH3BGRL3
<b>Epitope Specificity</b>	31-93//93
<b>Isotype</b>	IgG
<b>Purity</b>	affinity purified by Protein A
<b>Buffer</b>	Preservative: 0.02% Proclin300, Constituents: 1% BSA, 0.01M PBS, pH7.4.
<b>SUBCELLULAR LOCATION</b>	Cytoplasm. Nucleus.
<b>SIMILARITY</b>	Belongs to the SH3BGR family. Contains 1 glutaredoxin domain.
<b>Important Note</b>	This product as supplied is intended for research use only, not for use in human, therapeutic or diagnostic applications.
<b>Background Descriptions</b>	SH3BGRL3 (SH3 Domain Binding Glutamate Rich Protein Like 3) is a Protein Coding gene. GO annotations related to this gene include GTPase activator activity and protein disulfide oxidoreductase activity. An important paralog of this gene is SH3BGRL2.

## Additional Information

---

<b>Gene ID</b>	83442
<b>Other Names</b>	SH3 domain-binding glutamic acid-rich-like protein 3, SH3 domain-binding protein 1, SH3BP-1, TNF inhibitory protein B1, TIP-B1, SH3BGRL3
<b>Target/Specificity</b>	Ubiquitous.
<b>Dilution</b>	IHC-P=1:100-500,IHC-F=1:100-500,IF=1:100-500
<b>Storage</b>	Store at -20 °C for one year. Avoid repeated freeze/thaw cycles. When reconstituted in sterile pH 7.4 0.01M PBS or diluent of antibody the antibody is stable for at least two weeks at 2-4 °C.

## Protein Information

---

<b>Name</b>	SH3BGRL3
<b>Function</b>	Could act as a modulator of glutaredoxin biological activity (Probable). May play a role in cytoskeleton organization (PubMed: <a href="#">34380438</a> ).
<b>Cellular Location</b>	Cytoplasm, cytosol. Cell projection, ruffle membrane. Nucleus
<b>Tissue Location</b>	Ubiquitous (PubMed:11404387, PubMed:11444877). Expressed in heart, kidney and liver (at protein level) (PubMed:11404387). Expressed in brain, lung, spleen and skeletal muscle (PubMed:11404387).

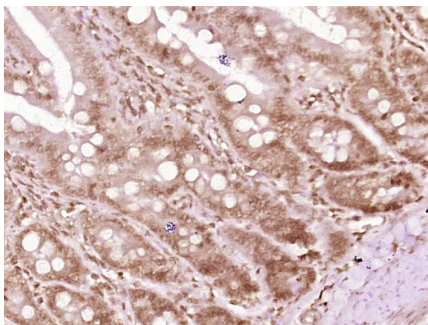
## Background

---

SH3BGRL3 (SH3 Domain Binding Glutamate Rich Protein Like 3) is a Protein Coding gene. GO annotations related to this gene include GTPase activator activity and protein disulfide oxidoreductase activity. An important paralog of this gene is SH3BGRL2.

## Images

---



Paraformaldehyde-fixed, paraffin embedded (rat colon tissue); Antigen retrieval by boiling in sodium citrate buffer (pH6.0) for 15min; Block endogenous peroxidase by 3% hydrogen peroxide for 20 minutes; Blocking buffer (normal goat serum) at 37°C for 30min; Antibody incubation with (SH3BGRL3) Polyclonal Antibody, Unconjugated (AP57911) at 1:400 overnight at 4°C, followed by operating according to SP Kit(Rabbit) (sp-0023) instructions and DAB staining.

Please note: All products are 'FOR RESEARCH USE ONLY. NOT FOR USE IN DIAGNOSTIC OR THERAPEUTIC PROCEDURES'.