

# SLC16A9 Polyclonal Antibody

Purified Rabbit Polyclonal Antibody (Pab)

Catalog # AP57922

## Product Information

---

<b>Application</b>	WB, IHC-P, IHC-F, IF, ICC, E
<b>Primary Accession</b>	<a href="#">Q7RTY1</a>
<b>Reactivity</b>	Rat, Pig, Dog, Bovine
<b>Host</b>	Rabbit
<b>Clonality</b>	Polyclonal
<b>Calculated MW</b>	55794
<b>Physical State</b>	Liquid
<b>Immunogen</b>	KLH conjugated synthetic peptide derived from human SLC16A9
<b>Epitope Specificity</b>	221-320/509
<b>Isotype</b>	IgG
<b>Purity</b>	affinity purified by Protein A
<b>Buffer</b>	Preservative: 0.02% Proclin300, Constituents: 1% BSA, 0.01M PBS, pH7.4.
<b>SUBCELLULAR LOCATION</b>	Cell membrane.
<b>SIMILARITY</b>	Belongs to the major facilitator superfamily. Monocarboxylate porter (TC 2.A.1.13) family.
<b>Important Note</b>	This product as supplied is intended for research use only, not for use in human, therapeutic or diagnostic applications.
<b>Background Descriptions</b>	SLC16A9 (Solute Carrier Family 16 Member 9) is a Protein Coding gene. Diseases associated with SLC16A9 include Gout. GO annotations related to this gene include symporter activity and monocarboxylic acid transmembrane transporter activity. An important paralog of this gene is SLC16A14.

## Additional Information

---

<b>Gene ID</b>	220963
<b>Other Names</b>	Monocarboxylate transporter 9, MCT 9, Solute carrier family 16 member 9, SLC16A9, C10orf36, MCT9
<b>Dilution</b>	WB=1:500-2000,IHC-P=1:100-500,IHC-F=1:100-500,ICC=1:100-500,IF=1:100-500,ELISA=1:5000-10000
<b>Format</b>	0.01M TBS(pH7.4) with 1% BSA, 0.09% (W/V) sodium azide and 50% Glyce
<b>Storage</b>	Store at -20 °C for one year. Avoid repeated freeze/thaw cycles. When reconstituted in sterile pH 7.4 0.01M PBS or diluent of antibody the antibody is stable for at least two weeks at 2-4 °C.

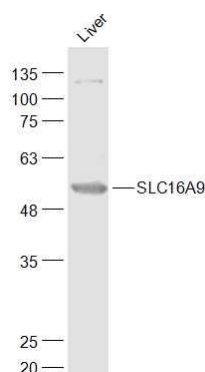
## Protein Information

---

<b>Name</b>	SLC16A9 ( <a href="#">HGNC:23520</a> )
<b>Synonyms</b>	C10orf36, MCT9
<b>Function</b>	Extracellular pH-and Na(+)-sensitive low-affinity creatine transporter (PubMed: <a href="#">31784090</a> ). Also functions as a pH-independent carnitine efflux transporter (PubMed: <a href="#">21886157</a> ).
<b>Cellular Location</b>	Cell membrane; Multi-pass membrane protein

## Images

---



Sample:  
Liver (Mouse) Lysate at 40 ug  
Primary: Anti-SLC16A9 (AP57922) at 1/1000 dilution  
Secondary: IRDye800CW Goat Anti-Rabbit IgG at 1/20000 dilution  
Predicted band size: 56 kD  
Observed band size: 56 kD

Please note: All products are 'FOR RESEARCH USE ONLY. NOT FOR USE IN DIAGNOSTIC OR THERAPEUTIC PROCEDURES'.