

MTNR1B Polyclonal Antibody

Purified Rabbit Polyclonal Antibody (Pab)

Catalog # AP57968

Product Information

Application	WB, IHC-P, IHC-F, IF, ICC, E
Primary Accession	P49286
Reactivity	Rat
Host	Rabbit
Clonality	Polyclonal
Calculated MW	40188
Physical State	Liquid
Immunogen	KLH conjugated synthetic peptide derived from human MTNR1B
Epitope Specificity	271-364/364
Isotype	IgG
Purity	affinity purified by Protein A
Buffer	0.01M TBS (pH7.4) with 1% BSA, 0.02% Proclin300 and 50% Glycerol.
SUBCELLULAR LOCATION	Cell membrane; Multi-pass membrane protein.
SIMILARITY	Belongs to the G-protein coupled receptor 1 family.
Important Note	This product as supplied is intended for research use only, not for use in human, therapeutic or diagnostic applications.
Background Descriptions	This gene encodes one of two high affinity forms of a receptor for melatonin, the primary hormone secreted by the pineal gland. This receptor is a G-protein coupled, 7-transmembrane receptor that is responsible for melatonin effects on mammalian circadian rhythm and reproductive alterations affected by day length. The receptor is an integral membrane protein that is readily detectable and localized to two specific regions of the brain. The hypothalamic suprachiasmatic nucleus appears to be involved in circadian rhythm while the hypophyseal pars tuberalis may be responsible for the reproductive effects of melatonin.

Additional Information

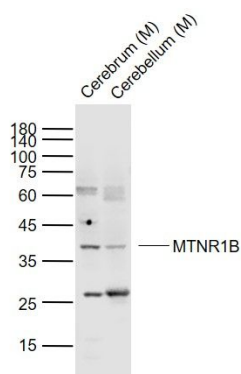
Gene ID	4544
Other Names	Melatonin receptor type 1B, Mel-1B-R, Mel1b receptor, MTNR1B
Target/Specificity	Expressed in retina and less in brain and hippocampus.
Dilution	WB=1:500-2000,IHC-P=1:100-500,IHC-F=1:100-500,ICC=1:100-500,IF=1:100-500,ELISA=1:5000-10000
Format	0.01M TBS(pH7.4) with 1% BSA, 0.09% (W/V) sodium azide and 50% Glyce
Storage	Store at -20 °C for one year. Avoid repeated freeze/thaw cycles. When reconstituted in sterile pH 7.4 0.01M PBS or diluent of antibody the antibody

is stable for at least two weeks at 2-4 °C.

Protein Information

Name	MTNR1B
Function	High affinity receptor for melatonin. Likely to mediate the reproductive and circadian actions of melatonin. The activity of this receptor is mediated by pertussis toxin sensitive G proteins that inhibit adenylate cyclase activity.
Cellular Location	Cell membrane; Multi-pass membrane protein.
Tissue Location	Expressed in retina and less in brain and hippocampus.

Images



Sample:

Lane 1: Cerebrum (Mouse) Lysate at 40 ug

Lane 2: Cerebellum (Mouse) Lysate at 40 ug

Primary: Anti-MTNR1B (AP57968) at 1/1000 dilution

Secondary: IRDye800CW Goat Anti-Rabbit IgG at 1/20000 dilution

Predicted band size: 40 kD

Observed band size: 38 kD

Please note: All products are 'FOR RESEARCH USE ONLY. NOT FOR USE IN DIAGNOSTIC OR THERAPEUTIC PROCEDURES'.