

# CCR-2 Polyclonal Antibody

Purified Rabbit Polyclonal Antibody (Pab)

Catalog # AP57987

## Product Information

---

<b>Application</b>	IHC-P, IHC-F, ICC, E
<b>Primary Accession</b>	<a href="#">P51683</a>
<b>Reactivity</b>	Rat
<b>Host</b>	Rabbit
<b>Clonality</b>	Polyclonal
<b>Calculated MW</b>	42783
<b>Physical State</b>	Liquid
<b>Immunogen</b>	KLH conjugated synthetic peptide derived from mouse CCR-2
<b>Epitope Specificity</b>	301-373/373
<b>Isotype</b>	IgG
<b>Purity</b>	affinity purified by Protein A
<b>Buffer</b>	0.01M TBS (pH7.4) with 1% BSA, 0.02% Proclin300 and 50% Glycerol.
<b>SUBCELLULAR LOCATION</b>	Cell membrane; Multi-pass membrane protein.
<b>SIMILARITY</b>	Belongs to the G-protein coupled receptor 1 family.
<b>SUBUNIT</b>	Binds to HIV-1 Tat. Interacts with ARRB1.
<b>Post-translational modifications</b>	N-glycosylated.
<b>Important Note</b>	This product as supplied is intended for research use only, not for use in human, therapeutic or diagnostic applications.
<b>Background Descriptions</b>	This gene encodes two isoforms of a receptor for monocyte chemoattractant protein-1, a chemokine which specifically mediates monocyte chemotaxis. Monocyte chemoattractant protein-1 is involved in monocyte infiltration in inflammatory diseases such as rheumatoid arthritis as well as in the inflammatory response against tumors. The receptors encoded by this gene mediate agonist-dependent calcium mobilization and inhibition of adenylyl cyclase. This gene is located in the chemokine receptor gene cluster region. Two alternatively spliced transcript variants are expressed by the gene. [provided by RefSeq, Mar 2009].

## Additional Information

---

<b>Gene ID</b>	12772
<b>Other Names</b>	C-C chemokine receptor type 2, C-C CKR-2, CC-CKR-2, CCR-2, CCR2, JE/FIC receptor, MCP-1 receptor, CD192, Ccr2, Cmkbr2
<b>Target/Specificity</b>	Detected in monocyte/macrophage cell lines, but not in nonhematopoietic cell lines.
<b>Dilution</b>	IHC-P=1:100-500,IHC-F=1:100-500,ICC=1:100-500,Flow-Cyt=1ug/Test,ELISA=1:5000-10000

<b>Format</b>	0.01M TBS(pH7.4) with 1% BSA, 0.09% (W/V) sodium azide and 50% Glyce
<b>Storage</b>	Store at -20 °C for one year. Avoid repeated freeze/thaw cycles. When reconstituted in sterile pH 7.4 0.01M PBS or diluent of antibody the antibody is stable for at least two weeks at 2-4 °C.

## Protein Information

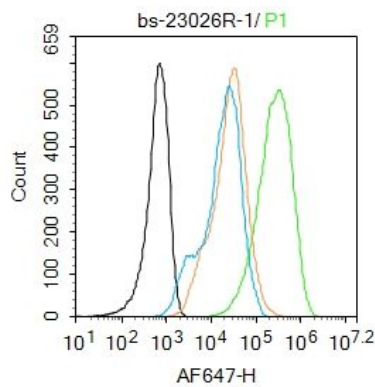
---

<b>Name</b>	Ccr2
<b>Synonyms</b>	Cmkbr2
<b>Function</b>	Key functional receptor for CCL2 but can also bind CCL7 and CCL12 chemokines (PubMed: <a href="#">8631787</a> , PubMed: <a href="#">8662823</a> , PubMed: <a href="#">8996246</a> ). Its binding with CCL2 on monocytes and macrophages mediates chemotaxis and migration induction through the activation of the PI3K cascade, the small G protein Rac and lamellipodium protrusion (By similarity). Also acts as a receptor for the beta-defensin DEFB106A/DEFB106B (By similarity). Regulates the expression of T-cell inflammatory cytokines and T-cell differentiation, promoting the differentiation of T-cells into T-helper 17 cells (Th17) during inflammation (PubMed: <a href="#">28507030</a> ). Facilitates the export of mature thymocytes by enhancing directional movement of thymocytes to sphingosine-1-phosphate stimulation and up- regulation of S1P1R expression; signals through the JAK-STAT pathway to regulate FOXO1 activity leading to an increased expression of S1P1R (PubMed: <a href="#">29930553</a> ). Plays an important role in mediating peripheral nerve injury-induced neuropathic pain (PubMed: <a href="#">29993042</a> ). Increases NMDA-mediated synaptic transmission in both dopamine D1 and D2 receptor-containing neurons, which may be caused by MAPK/ERK-dependent phosphorylation of GRIN2B/NMDAR2B (PubMed: <a href="#">29993042</a> ). Mediates the recruitment of macrophages and monocytes to the injury site following brain injury (PubMed: <a href="#">24806994</a> , PubMed: <a href="#">29632244</a> ).
<b>Cellular Location</b>	Cell membrane; Multi-pass membrane protein. Note=The chemoattractant receptors are reportedly distributed throughout the cell surface; after stimulation with a ligand, such as CCL2, they are rapidly recruited into microdomain clusters at the cell membrane {ECO:0000250 UniProtKB:P41597}
<b>Tissue Location</b>	Expressed in mature thymocytes (PubMed:29930553). Detected in monocyte/macrophage cell lines, but not in nonhematopoietic cell lines (PubMed:8631787).

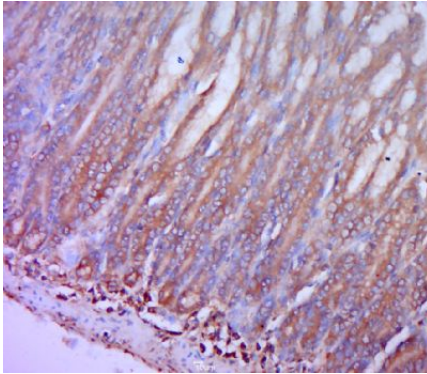
## Images

---

Blank control: Raw264.7.  
 Primary Antibody (green line): Rabbit Anti-CCR-2 antibody (AP57987)  
 Dilution: 1 µg /10<sup>6</sup> cells;  
 Isotype Control Antibody (orange line): Rabbit IgG .  
 Secondary Antibody : Goat anti-rabbit IgG-AF647  
 Dilution: 1 µg /test.  
 Protocol  
 The cells were incubated in 5%BSA to block non-specific protein-protein interactions for 30 min at room temperature .Cells stained with Primary Antibody for 30



min at room temperature. The secondary antibody used for 40 min at room temperature. Acquisition of 20,000 events was performed.



Paraformaldehyde-fixed, paraffin embedded (rat stomach tissue); Antigen retrieval by boiling in sodium citrate buffer (pH6.0) for 15min; Block endogenous peroxidase by 3% hydrogen peroxide for 20 minutes; Blocking buffer (normal goat serum) at 37°C for 30min; Antibody incubation with (CCR-2) Polyclonal Antibody, Unconjugated (AP57987) at 1:400 overnight at 4°C, followed by a conjugated secondary (sp-0023) for 20 minutes and DAB staining.

Please note: All products are 'FOR RESEARCH USE ONLY. NOT FOR USE IN DIAGNOSTIC OR THERAPEUTIC PROCEDURES'.