

Cytochrome P450 2D1 Polyclonal Antibody

Purified Rabbit Polyclonal Antibody (Pab)

Catalog # AP58008

Product Information

Application	WB, IHC-P, IHC-F, IF, ICC, E
Primary Accession	P10633
Reactivity	Rat
Host	Rabbit
Clonality	Polyclonal
Calculated MW	57175
Physical State	Liquid
Immunogen	KLH conjugated synthetic peptide derived from rat Cytochrome P450 2D1
Epitope Specificity	101-200/504
Purity	affinity purified by Protein A
Buffer	0.01M TBS (pH7.4) with 1% BSA, 0.02% Proclin300 and 50% Glycerol.
SUBCELLULAR LOCATION	Endoplasmic reticulum membrane; Peripheral membrane protein. Microsome membrane; Peripheral membrane protein.
SIMILARITY	Belongs to the cytochrome P450 family.
Important Note	This product as supplied is intended for research use only, not for use in human, therapeutic or diagnostic applications.
Background Descriptions	The cytochrome P450 superfamily of heme thiolate mono oxygenases play a key role in the oxidative metabolism of many endogenous and exogenous molecules, and are classified by their primary structure into four main groups. It is an ancient superfamily, which has been identified in prokaryotes and in many types of eukaryotic cells. The CYP2A sub family is found in the liver, and recently in the nasal mucosa where they are involved in the metabolism of inhaled xenobiotics and nicotine. CYP2B proteins are found in the liver, where they are involved in the metabolism of hepatic drugs, and in the lung and brain, whereas the CYP2C proteins are involved in the metabolism of anti depressants. CYP2E1 is alcohol inducible, and found principally in the liver.

Additional Information

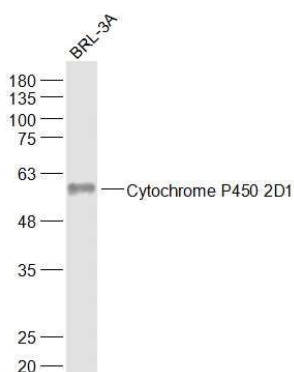
Gene ID	266684
Other Names	Cytochrome P450 2D1, 1.14.14.1, CYP1D1, Cytochrome P450-CMF1A, Cytochrome P450-DB1, Cytochrome P450-UT-7, Debrisoquine 4-hydroxylase, Cyp2d1, Cyp2d-1, Cyp2d9
Dilution	WB=1:500-2000,IHC-P=1:100-500,IHC-F=1:100-500,ICC=1:100-500,IF=1:100-500,ELISA=1:5000-10000
Format	0.01M TBS(pH7.4) with 1% BSA, 0.09% (W/V) sodium azide and 50% Glyce

Storage Store at -20 °C for one year. Avoid repeated freeze/thaw cycles. When reconstituted in sterile pH 7.4 0.01M PBS or diluent of antibody the antibody is stable for at least two weeks at 2-4 °C.

Protein Information

Name	Cyp2d1
Synonyms	Cyp2d-1, Cyp2d9
Function	Cytochromes P450 are a group of heme-thiolate monooxygenases. In liver microsomes, this enzyme is involved in an NADPH-dependent electron transport pathway. It oxidizes a variety of structurally unrelated compounds, including steroids, fatty acids, and xenobiotics.
Cellular Location	Endoplasmic reticulum membrane; Peripheral membrane protein. Microsome membrane; Peripheral membrane protein

Images



Sample:
BRL-3A(Rat) Cell Lysate at 30 ug
Primary: Anti-Cytochrome P450 2D1 (AP58008) at 1/1000 dilution
Secondary: IRDye800CW Goat Anti-Rabbit IgG at 1/20000 dilution
Predicted band size: 55 kD
Observed band size: 58 kD

Please note: All products are 'FOR RESEARCH USE ONLY. NOT FOR USE IN DIAGNOSTIC OR THERAPEUTIC PROCEDURES'.