

Macrophage Inflammatory Protein 1 gamma Polyclonal Antibody

Purified Rabbit Polyclonal Antibody (Pab)

Catalog # AP58027

Product Information

Application	IHC-P, IHC-F, IF, E
Primary Accession	P51670
Reactivity	Rat
Host	Rabbit
Clonality	Polyclonal
Calculated MW	13871
Physical State	Liquid
Immunogen	KLH conjugated synthetic peptide derived from mouse CCL9
Epitope Specificity	22-122/122
Isotype	IgG
Purity	affinity purified by Protein A
Buffer	0.01M TBS (pH7.4) with 1% BSA, 0.02% Proclin300 and 50% Glycerol.
SUBCELLULAR LOCATION	Secreted.
SIMILARITY	Belongs to the intercrine beta (chemokine CC) family.
Important Note	This product as supplied is intended for research use only, not for use in human, therapeutic or diagnostic applications.
Background Descriptions	This chemotactic factor that attracts monocytes, lymphocytes, basophils and eosinophils may play a role in neoplasia and inflammatory host responses and can bind heparin. Its highest expression is found in the small intestine and peripheral blood cells. It is induced by interferon gamma, mitogens and interleukin 1 and belongs to the intercrine beta (chemokine CC) family.

Additional Information

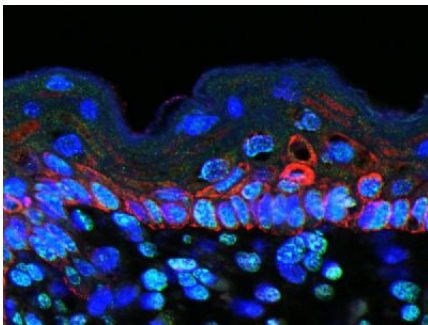
Gene ID	20308
Other Names	C-C motif chemokine 9, CCF18, Macrophage inflammatory protein 1-gamma, MIP-1-gamma, Macrophage inflammatory protein-related protein 2, MRP-2, Small-inducible cytokine A9, CCL9(29-101), CCL9(30-101), CCL9(31-101), Ccl9, Mrp2, Scya10, Scya9
Target/Specificity	Expressed mainly in the liver, lung, and the thymus, although some expression has been detected in a wide variety of tissues except brain
Dilution	IHC-P=1:100-500,IHC-F=1:100-500,IF=1:100-500,ELISA=1:5000-10000
Format	0.01M TBS(pH7.4) with 1% BSA, 0.09% (W/V) sodium azide and 50% Glyce
Storage	Store at -20 °C for one year. Avoid repeated freeze/thaw cycles. When

reconstituted in sterile pH 7.4 0.01M PBS or diluent of antibody the antibody is stable for at least two weeks at 2-4 °C.

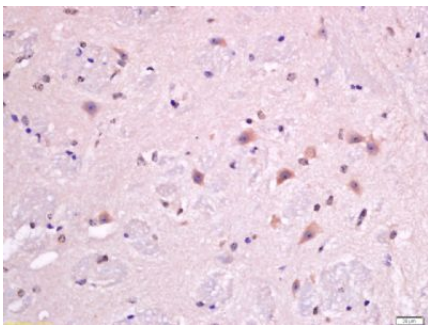
Protein Information

Name	Ccl9
Synonyms	Mrp2, Scya10, Scya9
Function	Monokine with inflammatory, pyrogenic and chemokinetic properties. Circulates at high concentrations in the blood of healthy animals. Binding to a high-affinity receptor activates calcium release in neutrophils. It also inhibits colony formation of bone marrow myeloid immature progenitors.
Cellular Location	Secreted.
Tissue Location	Expressed mainly in the liver, lung, and the thymus, although some expression has been detected in a wide variety of tissues except brain

Images



Images kindly provided by Dr. Denny Cottle from the publication, Fetal inhibition of inflammation improves disease phenotypes in Harlequin Ichthyosis. Formalin-fixed and paraffin embedded mouse skin probed with Rabbit Anti- Macrophage Inflammatory Protein 1 gamma Polyclonal Antibody (AP58027) at 1:50 for two hours at room temperature (green channel). 5



Tissue/cell: mouse brain tissue; 4%
Paraformaldehyde-fixed and paraffin-embedded;
Antigen retrieval: citrate buffer (0.01M, pH 6.0), Boiling bathing for 15min; Block endogenous peroxidase by 3% Hydrogen peroxide for 30min; Blocking buffer (normal goat serum,C-0005) at 37°C for 20 min;
Incubation: Anti- MIP-1 gamma Polyclonal Antibody, Unconjugated(AP58027) 1:500, overnight at 4°C, followed by conjugation to the secondary antibody(SP-0023) and DAB(C-0010) staining

Please note: All products are 'FOR RESEARCH USE ONLY. NOT FOR USE IN DIAGNOSTIC OR THERAPEUTIC PROCEDURES'.