

# CD35 Polyclonal Antibody

Purified Rabbit Polyclonal Antibody (Pab)

Catalog # AP58038

## Product Information

Application	IHC-P, IHC-F, IF, ICC, E
Primary Accession	<a href="#">P17927</a>
Reactivity	Human
Host	Rabbit
Clonality	Polyclonal
Calculated MW	223663

## Additional Information

Gene ID	1378
Other Names	Complement receptor type 1, C3b/C4b receptor, CD35, CR1, C3BR
Dilution	IHC-P=1:100-500,IHC-F=1:100-500,ICC=1:100-500,IF=1:100-500,Flow-Cyt=1 µg /test,ELISA=1:5000-10000
Format	0.01M TBS(pH7.4) with 1% BSA, 0.09% (W/V) sodium azide and 50% Glyce
Storage	Store at -20 °C for one year. Avoid repeated freeze/thaw cycles. When reconstituted in sterile pH 7.4 0.01M PBS or diluent of antibody the antibody is stable for at least two weeks at 2-4 °C.

## Protein Information

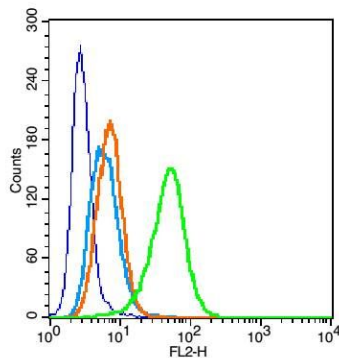
Name	CR1
Synonyms	C3BR
Function	Membrane immune adherence receptor that plays a critical role in the capture and clearance of complement-opsonized pathogens by erythrocytes and monocytes/macrophages (PubMed: <a href="#">2963069</a> ). Mediates the binding by these cells of particles and immune complexes that have activated complement to eliminate them from the circulation (PubMed: <a href="#">2963069</a> ). Also acts in the inhibition of spontaneous complement activation by impairing the formation and function of the alternative and classical pathway C3/C5 convertases, and by serving as a cofactor for the cleavage by factor I of C3b to iC3b, C3c and C3d,g, and of C4b to C4c and C4d (PubMed: <a href="#">2972794</a> , PubMed: <a href="#">8175757</a> ). Also plays a role in immune regulation by contributing, upon ligand binding, to the generation of regulatory T cells from activated helper T cells (PubMed: <a href="#">25742728</a> ).
Cellular Location	Membrane; Single- pass type I membrane protein

## Tissue Location

Present on erythrocytes, a subset of T cells, mature B cells, follicular dendritic cells, monocytes and granulocytes

## Images

---



Blank control(blue): U937 (fixed with 2% paraformaldehyde (10 min)).

Primary Antibody: Rabbit Anti-Dopamine Transporter antibody(AP58038), Dilution: 0.2 µg in 100 µL 1X PBS containing 0.5% BSA;

Isotype Control Antibody: Rabbit IgG(orange) ,used under the same conditions );

Secondary Antibody: Goat anti-rabbit IgG-PE(white blue), Dilution: 1:200 in 1 X PBS containing 0.5% BSA.

Please note: All products are 'FOR RESEARCH USE ONLY. NOT FOR USE IN DIAGNOSTIC OR THERAPEUTIC PROCEDURES'.