

IL22BP Polyclonal Antibody

Purified Rabbit Polyclonal Antibody (Pab)

Catalog # AP58041

Product Information

Application	WB, IHC-P, IHC-F, IF, E
Primary Accession	Q969J5
Reactivity	Rat
Host	Rabbit
Clonality	Polyclonal
Calculated MW	30550
Physical State	Liquid
Immunogen	KLH conjugated synthetic peptide derived from human IL-22BP
Epitope Specificity	165-263/263
Isotype	IgG
Purity	affinity purified by Protein A
Buffer	0.01M TBS (pH7.4) with 1% BSA, 0.02% Proclin300 and 50% Glycerol.
SUBCELLULAR LOCATION	Secreted.
SIMILARITY	Belongs to the type II cytokine receptor family. Contains 3 fibronectin type-III domains.
Important Note	This product as supplied is intended for research use only, not for use in human, therapeutic or diagnostic applications.
Background Descriptions	There are two isoforms of IL22 RA2 produce by alternative splicing. Isoform 1 may play a role in establishing and maintaining successful pregnancy. Isoform 2 is a receptor for IL22. Binds to IL22, prevents interaction with the functional IL-22R complex and blocks the activity of IL22 (in vitro). It may play an important role as an IL22 antagonist in the regulation of inflammatory responses.

Additional Information

Gene ID	116379
Other Names	Interleukin-22 receptor subunit alpha-2, IL-22 receptor subunit alpha-2, IL-22R-alpha-2, IL-22RA2, Cytokine receptor class-II member 10, Cytokine receptor family 2 member 10, CRF2-10, Cytokine receptor family type 2, soluble 1, CRF2-S1, Interleukin-22-binding protein, IL-22BP, IL22BP, ZcytoR16, IL22RA2
Target/Specificity	Expressed in placenta, spleen, breast, skin and lung. Also detected in intestinal tract, testis, brain, heart and thymus. No expression found in prostate, bladder, kidney, ovary, muscle, bone marrow, liver and uterus. Isoform 1 is expressed only in placenta. Isoform 2 is expressed in placenta and breast and at lower level in spleen, skin, thymus and stomach.
Dilution	WB=1:500-2000,IHC-P=1:100-500,IHC-F=1:100-500,IF=1:100-500,Flow-Cyt=1

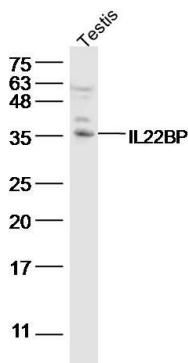
µg /test, ELISA=1:5000-10000

Format	0.01M TBS(pH7.4) with 1% BSA, 0.09% (W/V) sodium azide and 50% Glyce
Storage	Store at -20 °C for one year. Avoid repeated freeze/thaw cycles. When reconstituted in sterile pH 7.4 0.01M PBS or diluent of antibody the antibody is stable for at least two weeks at 2-4 °C.

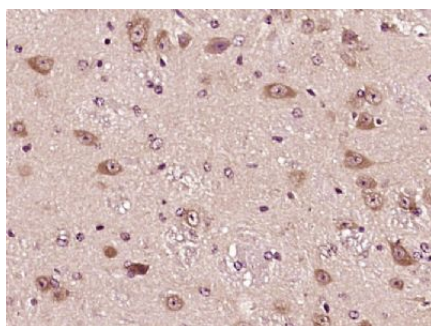
Protein Information

Name	IL22RA2
Function	Isoform 2 is a receptor for IL22. Binds to IL22, prevents interaction with the functional IL-22R complex and blocks the activity of IL22 (in vitro). May play an important role as an IL22 antagonist in the regulation of inflammatory responses.
Cellular Location	Secreted.
Tissue Location	Expressed in placenta, spleen, breast, skin and lung. Also detected in intestinal tract, testis, brain, heart and thymus. No expression found in prostate, bladder, kidney, ovary, muscle, bone marrow, liver and uterus. Isoform 1 is expressed only in placenta. Isoform 2 is expressed in placenta and breast and at lower level in spleen, skin, thymus and stomach

Images



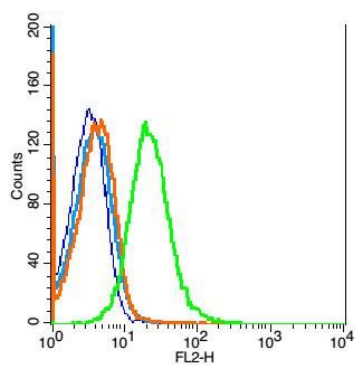
Sample:
testis(rat) Lysate at 40 µg
Primary: Anti-IL22BP (AP58041) at 1/300 dilution
Secondary: IRDye800CW Goat Anti-Rabbit IgG at 1/20000 dilution
Predicted band size: 25/28kD
Observed band size: 35 kD



Paraformaldehyde-fixed, paraffin embedded (Mouse brain); Antigen retrieval by boiling in sodium citrate buffer (pH6.0) for 15min; Block endogenous peroxidase by 3% hydrogen peroxide for 20 minutes; Blocking buffer (normal goat serum) at 37°C for 30min; Antibody incubation with (IL22BP) Polyclonal Antibody, Unconjugated (AP58041) at 1:400 overnight at 4°C, followed by operating according to SP Kit(Rabbit) (sp-0023) instructions and DAB staining.

Blank control: mouse spleen cells(blue), the cells were fixed with 2% paraformaldehyde (10 min) and then permeabilized with ice-cold 90% methanol for 30 min on ice.

Isotype Control Antibody: Rabbit IgG(orange) ;



Secondary Antibody: Goat anti-rabbit IgG-PE(white blue),
Dilution: 1:200 in 1 X PBS containing 0.5% BSA ; Primary
Antibody Dilution: 1 μ g in 100 μ L 1X PBS containing 0.5%
BSA(green).

Please note: All products are 'FOR RESEARCH USE ONLY. NOT FOR USE IN DIAGNOSTIC OR THERAPEUTIC PROCEDURES'.