

# MD1 Polyclonal Antibody

Purified Rabbit Polyclonal Antibody (Pab)

Catalog # AP58045

## Product Information

---

|                                |  |
|--------------------------------|--|
| <b>Application</b>             | IHC-P, IHC-F, IF, E  |
| <b>Primary Accession</b>       | <a href="#">O95711</a>   |
| <b>Reactivity</b>              | Rat, Pig, Dog, Bovine  |
| <b>Host</b>                    | Rabbit   |
| <b>Clonality</b>               | Polyclonal   |
| <b>Calculated MW</b>           | 17906  |
| <b>Physical State</b>          | Liquid   |
| <b>Immunogen</b>               | KLH conjugated synthetic peptide derived from human LY-86  |
| <b>Epitope Specificity</b>     | 65-162/162   |
| <b>Isotype</b>                 | IgG  |
| <b>Purity</b>                  | affinity purified by Protein A   |
| <b>Buffer</b>                  | 0.01M TBS (pH7.4) with 1% BSA, 0.02% Proclin300 and 50% Glycerol.  |
| <b>SUBCELLULAR LOCATION</b>    | Secreted. extracellular space. Associated with CD180 at the cell surface.  |
| <b>Important Note</b>          | This product as supplied is intended for research use only, not for use in human, therapeutic or diagnostic applications.  |
| <b>Background Descriptions</b> | MD1 is a 28 kDa molecule that is associated at the cell surface with RP105 (CD180). RP105 is a leucine-rich repeat (LRR) molecule that is expressed on B lymphocytes. It was first identified by a mAb that protects spleen B cells from irradiation-induced apoptosis. LRR proteins, such as Toll receptors, have a role in innate immunity. MD1 is primarily expressed by B cells, dendritic cells and monocytes, and promotes the recognition of, and subsequent signaling by LPS in the innate immune system. MD1 does not have any homology to other molecules. MD1 when expressed alone behaves as a secretory protein. Expression of MD1 in a cell increases the expression of RP105. |

## Additional Information

---

|                           |   |
|---------------------------|---|
| <b>Gene ID</b>            | 9450  |
| <b>Other Names</b>        | Lymphocyte antigen 86, Ly-86, Protein MD-1, LY86, MD1   |
| <b>Target/Specificity</b> | Highly expressed in B-cells, monocytes and tonsil.  |
| <b>Dilution</b>           | IHC-P=1:100-500,IHC-F=1:100-500,IF=1:100-500,ELISA=1:5000-10000   |
| <b>Format</b>             | 0.01M TBS(pH7.4) with 1% BSA, 0.09% (W/V) sodium azide and 50% Glyce  |
| <b>Storage</b>            | Store at -20 °C for one year. Avoid repeated freeze/thaw cycles. When reconstituted in sterile pH 7.4 0.01M PBS or diluent of antibody the antibody is stable for at least two weeks at 2-4 °C. |

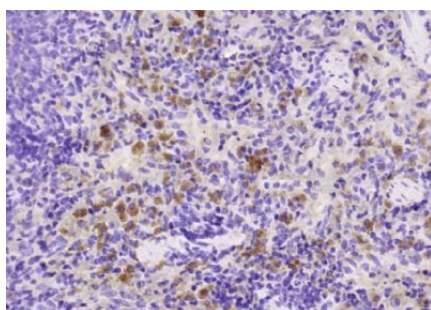
## Protein Information

---

|                          |   |
|--------------------------|---|
| <b>Name</b>              | LY86  |
| <b>Synonyms</b>          | MD1   |
| <b>Function</b>          | May cooperate with CD180 and TLR4 to mediate the innate immune response to bacterial lipopolysaccharide (LPS) and cytokine production. Important for efficient CD180 cell surface expression (By similarity). |
| <b>Cellular Location</b> | Secreted, extracellular space. Note=Associated with CD180 at the cell surface   |
| <b>Tissue Location</b>   | Highly expressed in B-cells, monocytes and tonsil.  |

## Images

---



Paraformaldehyde-fixed, paraffin embedded (rat spleen); Antigen retrieval by boiling in sodium citrate buffer (pH6.0) for 15min; Block endogenous peroxidase by 3% hydrogen peroxide for 20 minutes; Blocking buffer (normal goat serum) at 37°C for 30min; Antibody incubation with (MD1) Polyclonal Antibody, Unconjugated (AP58045) at 1:200 overnight at 4°C, followed by operating according to SP Kit(Rabbit) (sp-0023) instructions and DAB staining.

Please note: All products are 'FOR RESEARCH USE ONLY. NOT FOR USE IN DIAGNOSTIC OR THERAPEUTIC PROCEDURES'.