

# S100-A8 / MRP8 Polyclonal Antibody

Purified Rabbit Polyclonal Antibody (Pab)

Catalog # AP58052

## Product Information

---

<b>Application</b>	IF, E
<b>Primary Accession</b>	<a href="#">P27005</a>
<b>Reactivity</b>	Rat
<b>Host</b>	Rabbit
<b>Clonality</b>	Polyclonal
<b>Calculated MW</b>	10295
<b>Physical State</b>	Liquid
<b>Immunogen</b>	KLH conjugated synthetic peptide derived from mouse S100A8
<b>Epitope Specificity</b>	25-89/89
<b>Isotype</b>	IgG
<b>Purity</b>	affinity purified by Protein A
<b>Buffer</b>	0.01M TBS (pH7.4) with 1% BSA, 0.02% Proclin300 and 50% Glycerol.
<b>SUBCELLULAR LOCATION</b>	Secreted. Cytoplasm. Cytoplasm, cytoskeleton. Cell membrane; Peripheral membrane protein.
<b>SIMILARITY</b>	Belongs to the S-100 family. Contains 2 EF-hand domains.
<b>SUBUNIT</b>	Homodimer. Heterotetramer with S100A9.
<b>Important Note</b>	This product as supplied is intended for research use only, not for use in human, therapeutic or diagnostic applications.
<b>Background Descriptions</b>	The protein encoded by this gene is a member of the S100 family of proteins containing 2 EF-hand calcium-binding motifs. S100 proteins are localized in the cytoplasm and/or nucleus of a wide range of cells, and involved in the regulation of a number of cellular processes such as cell cycle progression and differentiation. S100 genes include at least 13 members which are located as a cluster on chromosome 1q21. This protein may function in the inhibition of casein kinase and as a cytokine. Altered expression of this protein is associated with the disease cystic fibrosis. [provided by RefSeq].

## Additional Information

---

<b>Gene ID</b>	20201
<b>Other Names</b>	Protein S100-A8, Calgranulin-A, Chemotactic cytokine CP-10, Leukocyte L1 complex light chain, Migration inhibitory factor-related protein 8, MRP-8, p8, Pro-inflammatory S100 cytokine, S100 calcium-binding protein A8, S100a8, Caga, Mrp8
<b>Target/Specificity</b>	Expressed by macrophages in chronic inflammations. Also expressed in epithelial cells constitutively or induced during dermatoses.
<b>Dilution</b>	IF=1:100-500, Flow-Cyt=2ug/test, ELISA=1:5000-10000

<b>Format</b>	0.01M TBS(pH7.4) with 1% BSA, 0.09% (W/V) sodium azide and 50% Glyce
<b>Storage</b>	Store at -20 °C for one year. Avoid repeated freeze/thaw cycles. When reconstituted in sterile pH 7.4 0.01M PBS or diluent of antibody the antibody is stable for at least two weeks at 2-4 °C.

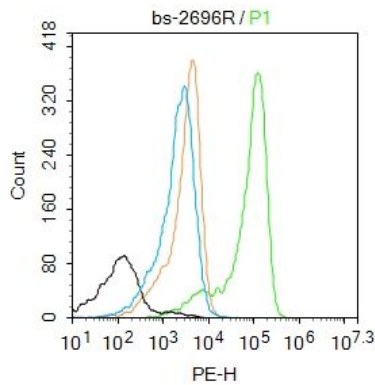
## Protein Information

---

<b>Name</b>	S100a8 {ECO:0000312   MGI:MGI:88244}
<b>Synonyms</b>	Caga, Mrp8
<b>Function</b>	<p>S100A8 is a calcium- and zinc-binding protein which plays a prominent role in the regulation of inflammatory processes and immune response. It can induce neutrophil chemotaxis and adhesion. Predominantly found as calprotectin (S100A8/A9) which has a wide plethora of intra- and extracellular functions. The intracellular functions include: facilitating leukocyte arachidonic acid trafficking and metabolism, modulation of the tubulin-dependent cytoskeleton during migration of phagocytes and activation of the neutrophilic NADPH- oxidase. Also participates in regulatory T-cell differentiation together with CD69. Activates NADPH-oxidase by facilitating the enzyme complex assembly at the cell membrane, transferring arachidonic acid, an essential cofactor, to the enzyme complex and S100A8 contributes to the enzyme assembly by directly binding to NCF2/P67PHOX. The extracellular functions involve pro-inflammatory, antimicrobial, oxidant-scavenging and apoptosis-inducing activities. Its pro- inflammatory activity includes recruitment of leukocytes, promotion of cytokine and chemokine production, and regulation of leukocyte adhesion and migration. Acts as an alarmin or a danger associated molecular pattern (DAMP) molecule and stimulates innate immune cells via binding to pattern recognition receptors such as Toll-like receptor 4 (TLR4) and receptor for advanced glycation endproducts (AGER). Binding to TLR4 and AGER activates the MAP-kinase and NF-kappa-B signaling pathways resulting in the amplification of the pro-inflammatory cascade. Has antimicrobial activity towards bacteria and fungi and exerts its antimicrobial activity probably via chelation of Zn(2+) which is essential for microbial growth. Can induce cell death via autophagy and apoptosis and this occurs through the cross-talk of mitochondria and lysosomes via reactive oxygen species (ROS) and the process involves BNIP3. Can regulate neutrophil number and apoptosis by an anti- apoptotic effect; regulates cell survival via ITGAM/ITGB and TLR4 and a signaling mechanism involving MEK-ERK. Its role as an oxidant scavenger has a protective role in preventing exaggerated tissue damage by scavenging oxidants. The iNOS-S100A8/A9 transnitrosylase complex is proposed to direct selective inflammatory stimulus-dependent S- nitrosylation of multiple targets such as GAPDH, ANXA5, EZR, MSN and VIM by recognizing a [IL]-x-C-x-x-[DE] motif; S100A8 seems to contribute to S-nitrosylation site selectivity (By similarity).</p>
<b>Cellular Location</b>	Secreted. Cytoplasm. Cytoplasm, cytoskeleton. Cell membrane; Peripheral membrane protein Note=Predominantly localized in the cytoplasm. Upon elevation of the intracellular calcium level, translocated from the cytoplasm to the cytoskeleton and the cell membrane. Upon neutrophil activation or endothelial adhesion of monocytes, is secreted via a microtubule- mediated, alternative pathway

## Images

---



Blank control:K562.

Primary Antibody (green line): Rabbit Anti-S100-A8 antibody (AP58052)

Dilution: 2  $\mu\text{g}$  / $10^6$  cells;

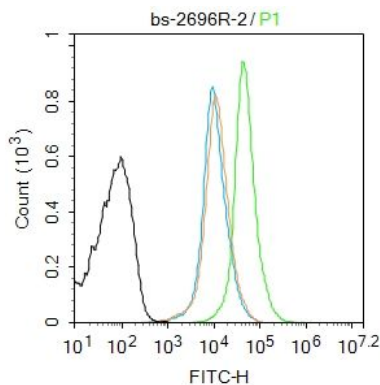
Isotype Control Antibody (orange line): Rabbit IgG .

Secondary Antibody : Goat anti-rabbit IgG-PE

Dilution: 1  $\mu\text{g}$  /test.

Protocol

The cells were fixed with 4% PFA (10min at room temperature)and then permeabilized with 0.1%PBST for 20 min at room temperature. The cells were then incubated in 5%BSA to block non-specific protein-protein interactions for 30 min at room temperature .Cells stained with Primary Antibody for 30 min at room temperature. The secondary antibody used for 40 min at room temperature. Acquisition of 20,000 events was performed.



Blank control:Mouse spleen.

Primary Antibody (green line): Rabbit Anti-S100-A8 antibody (AP58052)

Dilution: 2  $\mu\text{g}$  / $10^6$  cells;

Isotype Control Antibody (orange line): Rabbit IgG .

Secondary Antibody : Goat anti-rabbit IgG-AF488

Dilution: 1  $\mu\text{g}$  /test.

Protocol

The cells were fixed with 4% PFA (10min at room temperature)and then permeabilized with 0.1% PBST for 20 min at room temperature. The cells were then incubated in 5%BSA to block non-specific protein-protein interactions for 30 min at room temperature .Cells stained with Primary Antibody for 30 min at room temperature. The secondary antibody used for 40 min at room temperature. Acquisition of 20,000 events was performed.

Please note: All products are 'FOR RESEARCH USE ONLY. NOT FOR USE IN DIAGNOSTIC OR THERAPEUTIC PROCEDURES'.