

Brs3 Polyclonal Antibody

Purified Rabbit Polyclonal Antibody (Pab)

Catalog # AP58089

Product Information

Application	WB, IHC-P, IHC-F, IF, ICC, E
Primary Accession	P32247
Reactivity	Rat, Pig, Bovine
Host	Rabbit
Clonality	Polyclonal
Calculated MW	44411
Physical State	Liquid
Immunogen	KLH conjugated synthetic peptide derived from human Brs3/Bombesin Receptor 3
Epitope Specificity	8-110/399
Isotype	IgG
Purity	affinity purified by Protein A
Buffer	0.01M TBS (pH7.4) with 1% BSA, 0.02% Proclin300 and 50% Glycerol.
SUBCELLULAR LOCATION	Cell membrane; Multi-pass membrane protein.
SIMILARITY	Belongs to the G-protein coupled receptor 1 family.
SUBUNIT	nteracts with C6orf89.
Important Note	This product as supplied is intended for research use only, not for use in human, therapeutic or diagnostic applications.
Background Descriptions	Bombesin Receptor 3 expression has been reported in lung (normal and cancer), nasal mucosa, placenta, and uterus. ESTs have been isolated from normal brain and kidney cancer libraries. It has a role in sperm cell division, maturation, or function. This receptor mediates its action by association with G proteins that activate a phosphatidylinositol-calcium second messenger system.

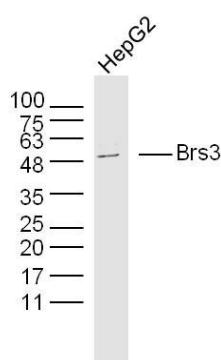
Additional Information

Gene ID	680
Other Names	Bombesin receptor subtype-3, BRS-3, BRS3
Target/Specificity] In germ cells in testis. Lung carcinoma cells.
Dilution	WB=1:500-2000,IHC-P=1:100-500,IHC-F=1:100-500,ICC=1:100-500,IF=1:100-500,ELISA=1:5000-10000
Format	0.01M TBS(pH7.4) with 1% BSA, 0.09% (W/V) sodium azide and 50% Glyce
Storage	Store at -20 °C for one year. Avoid repeated freeze/thaw cycles. When reconstituted in sterile pH 7.4 0.01M PBS or diluent of antibody the antibody is stable for at least two weeks at 2-4 °C.

Protein Information

Name	BRS3
Function	Role in sperm cell division, maturation, or function. This receptor mediates its action by association with G proteins that activate a phosphatidylinositol-calcium second messenger system.
Cellular Location	Cell membrane; Multi-pass membrane protein.
Tissue Location	In germ cells in testis. Lung carcinoma cells.

Images



Sample:

HepG2 Cell (Human) Lysate at 30 ug

Primary: Anti- Brs3 (AP58089) at 1/300 dilution

Secondary: IRDye800CW Goat Anti-Rabbit IgG at 1/20000 dilution

Predicted band size: 44 kD

Observed band size: 44 kD

Please note: All products are 'FOR RESEARCH USE ONLY. NOT FOR USE IN DIAGNOSTIC OR THERAPEUTIC PROCEDURES'.