

# TMEFF2 Polyclonal Antibody

Purified Rabbit Polyclonal Antibody (Pab)

Catalog # AP58099

## Product Information

---

<b>Application</b>	WB, IHC-P, IHC-F, IF, E
<b>Primary Accession</b>	<a href="#">Q9UIK5</a>
<b>Reactivity</b>	Rat, Pig, Dog, Bovine
<b>Host</b>	Rabbit
<b>Clonality</b>	Polyclonal
<b>Calculated MW</b>	41428
<b>Physical State</b>	Liquid
<b>Immunogen</b>	KLH conjugated synthetic peptide derived from human TMEFF2
<b>Epitope Specificity</b>	301-374/374
<b>Isotype</b>	IgG
<b>Purity</b>	affinity purified by Protein A
<b>Buffer</b>	0.01M TBS (pH7.4) with 1% BSA, 0.02% Proclin300 and 50% Glycerol.
<b>SUBCELLULAR LOCATION</b>	Isoform 1: Membrane; Single-pass type I membrane protein (Potential). Isoform 2: Membrane; Single-pass type I membrane protein (Potential). Isoform 3: Secreted.
<b>SIMILARITY</b>	Belongs to the tomoregulin family. Contains 1 EGF-like domain. Contains 2 Kazal-like domains.
<b>Post-translational modifications</b>	N-glycosylated. Contains chondroitin sulfate glycosaminoglycans. A soluble form (TMEFF2-ECD) is produced by proteolytic shedding. This shedding can be induced by phorbol ester or proinflammatory cytokines such as TNFalpha, and is mediated by ADAM17.
<b>Important Note</b>	This product as supplied is intended for research use only, not for use in human, therapeutic or diagnostic applications.
<b>Background Descriptions</b>	TMEFF2 is a growth factor implicated in the progression of prostate cancer. It is highly expressed in the brain and may act as a survival factor for mesencephalic and hippocampal neurons.

## Additional Information

---

<b>Gene ID</b>	23671
<b>Other Names</b>	Tomoregulin-2, TR-2, Hyperplastic polyposis protein 1, Transmembrane protein with EGF-like and two follistatin-like domains, TMEFF2, HPP1, TENB2, TPEF
<b>Target/Specificity</b>	Highly expressed in adult and fetal brain, spinal cord and prostate. Expressed in all brain regions except the pituitary gland, with highest levels in amygdala and corpus callosum. Expressed in the pericryptal myofibroblasts and other stromal cells of normal colonic mucosa. Expressed in prostate carcinoma. Down-regulated in colorectal cancer. Present in Alzheimer disease plaques (at protein level). Isoform 3 is expressed weakly in testis and at high levels in

normal and cancerous prostate.

<b>Dilution</b>	WB=1:500-2000,IHC-P=1:100-500,IHC-F=1:100-500,IF=1:100-500,ELISA=1:5000-10000
<b>Format</b>	0.01M TBS(pH7.4) with 1% BSA, 0.09% (W/V) sodium azide and 50% Glyce
<b>Storage</b>	Store at -20 °C for one year. Avoid repeated freeze/thaw cycles. When reconstituted in sterile pH 7.4 0.01M PBS or diluent of antibody the antibody is stable for at least two weeks at 2-4 °C.

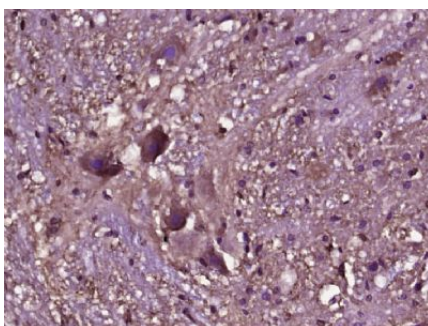
## Protein Information

---

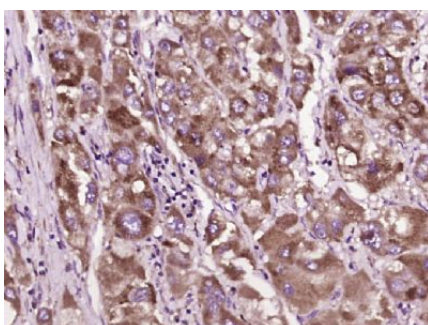
<b>Name</b>	TMEFF2
<b>Synonyms</b>	HPP1, TENB2, TPEF
<b>Function</b>	May be a survival factor for hippocampal and mesencephalic neurons. The shedded form up-regulates cancer cell proliferation, probably by promoting ERK1/2 phosphorylation.
<b>Cellular Location</b>	[Isoform 1]: Membrane; Single-pass type I membrane protein [Isoform 3]: Secreted.
<b>Tissue Location</b>	Highly expressed in adult and fetal brain, spinal cord and prostate. Expressed in all brain regions except the pituitary gland, with highest levels in amygdala and corpus callosum. Expressed in the pericryptal myofibroblasts and other stromal cells of normal colonic mucosa. Expressed in prostate carcinoma. Down-regulated in colorectal cancer. Present in Alzheimer disease plaques (at protein level). Isoform 3 is expressed weakly in testis and at high levels in normal and cancerous prostate.

## Images

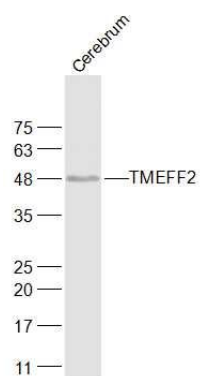
---



Paraformaldehyde-fixed, paraffin embedded (rat spinal tissue); Antigen retrieval by boiling in sodium citrate buffer (pH6.0) for 15min; Block endogenous peroxidase by 3% hydrogen peroxide for 20 minutes; Blocking buffer (normal goat serum) at 37°C for 30min; Antibody incubation with (TMEFF2) Polyclonal Antibody, Unconjugated (AP58099) at 1:400 overnight at 4°C, followed by operating according to SP Kit(Rabbit) (sp-0023) instructionsand DAB staining.



Paraformaldehyde-fixed, paraffin embedded (human liver carcinoma); Antigen retrieval by boiling in sodium citrate buffer (pH6.0) for 15min; Block endogenous peroxidase by 3% hydrogen peroxide for 20 minutes; Blocking buffer (normal goat serum) at 37°C for 30min; Antibody incubation with (TMEFF2) Polyclonal Antibody, Unconjugated (AP58099) at 1:400 overnight at 4°C, followed by operating according to SP Kit(Rabbit) (sp-0023) instructionsand DAB staining.



**Sample:**

Cerebrum (Rat) Lysate at 40 ug

Primary: Anti-TMEFF2 (AP58099) at 1/1000 dilution

Secondary: IRDye800CW Goat Anti-Rabbit IgG at 1/20000 dilution

Predicted band size: 37 kD

Observed band size: 48 kD

Please note: All products are 'FOR RESEARCH USE ONLY. NOT FOR USE IN DIAGNOSTIC OR THERAPEUTIC PROCEDURES'.