

Steroid sulfatase Polyclonal Antibody

Purified Rabbit Polyclonal Antibody (Pab)

Catalog # AP58101

Product Information

Application	WB, IHC-P, IHC-F, IF, E
Primary Accession	P08842
Reactivity	Rat, Pig, Dog, Bovine
Host	Rabbit
Clonality	Polyclonal
Calculated MW	65492
Physical State	Liquid
Immunogen	KLH conjugated synthetic peptide derived from human Steroid sulfatase
Epitope Specificity	51-150/583
Isotype	IgG
Purity	affinity purified by Protein A
Buffer	0.01M TBS (pH7.4) with 1% BSA, 0.02% Proclin300 and 50% Glycerol.
SUBCELLULAR LOCATION	Endoplasmic reticulum membrane; Multi-pass membrane protein.
SIMILARITY	Belongs to the sulfatase family.
SUBUNIT	Homodimer.
Post-translational modifications	The conversion to 3-oxoalanine (also known as C-formylglycine, FGly), of a serine or cysteine residue in prokaryotes and of a cysteine residue in eukaryotes, is critical for catalytic activity.
DISEASE	Defects in STS are the cause of ichthyosis X-linked (IXL) [MIM:308100]. Ichthyosis X-linked is a keratinization disorder manifesting with mild erythroderma and generalized exfoliation of the skin within a few weeks after birth. Affected boys later develop large, polygonal, dark brown scales, especially on the neck, extremities, trunk, and buttocks.
Important Note	This product as supplied is intended for research use only, not for use in human, therapeutic or diagnostic applications.
Background Descriptions	The protein encoded by this gene catalyzes the conversion of sulfated steroid precursors to estrogens during pregnancy. The encoded protein is found in the endoplasmic reticulum, where it acts as a homodimer. Mutations in this gene are known to cause X-linked ichthyosis (XLI). [provided by RefSeq, Jul 2008].

Additional Information

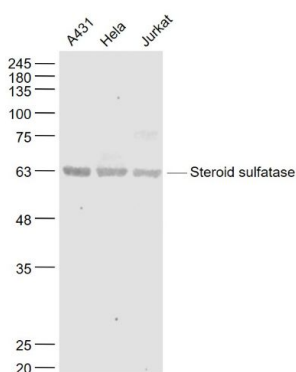
Gene ID	412
Other Names	Steryl-sulfatase, 3.1.6.2, Arylsulfatase C, ASC, Estrone sulfatase, Steroid sulfatase, Steryl-sulfate sulfohydrolase, STS, ARSC1
Dilution	WB=1:500-2000,IHC-P=1:100-500,IHC-F=1:100-500,IF=1:100-500,ELISA=1:5000-10000

Format	0.01M TBS(pH7.4) with 1% BSA, 0.09% (W/V) sodium azide and 50% Glyce
Storage	Store at -20 °C for one year. Avoid repeated freeze/thaw cycles. When reconstituted in sterile pH 7.4 0.01M PBS or diluent of antibody the antibody is stable for at least two weeks at 2-4 °C.

Protein Information

Name	STS
Synonyms	ARSC1
Function	Catalyzes the conversion of sulfated steroid precursors, such as dehydroepiandrosterone sulfate (DHEA-S) and estrone sulfate to the free steroid.
Cellular Location	Cytoplasmic vesicle, secretory vesicle, microneme membrane; Multi-pass membrane protein Endoplasmic reticulum membrane; Multi-pass membrane protein

Images



Sample:
A431(Human) Cell Lysate at 30 ug
Hela(Human) Cell Lysate at 30 ug
Jurkat(Human) Cell Lysate at 30 ug
Primary: Anti- Steroid sulfatase (AP58101) at 1/1000 dilution
Secondary: IRDye800CW Goat Anti-Rabbit IgG at 1/20000 dilution
Predicted band size: 62 kD
Observed band size: 63 kD

Please note: All products are 'FOR RESEARCH USE ONLY. NOT FOR USE IN DIAGNOSTIC OR THERAPEUTIC PROCEDURES'.