

C4orf31 Antibody (N-term)

Affinity Purified Rabbit Polyclonal Antibody (Pab)

Catalog # AP5812a

Product Information

Application	WB, IHC-P, FC, E
Primary Accession	Q8TB73
Other Accession	NP_078850.3
Reactivity	Human
Host	Rabbit
Clonality	Polyclonal
Isotype	Rabbit IgG
Clone Names	RB27407
Calculated MW	64673
Antigen Region	80-109

Additional Information

Gene ID	79625
Other Names	Protein NDNF, Neuron-derived neurotrophic factor, NDNF, C4orf31
Target/Specificity	This C4orf31 antibody is generated from rabbits immunized with a KLH conjugated synthetic peptide between 80-109 amino acids of human C4orf31.
Dilution	WB~~1:1000 IHC-P~~1:100~500 FC~~1:10~50 E~~Use at an assay dependent concentration.
Format	Purified polyclonal antibody supplied in PBS with 0.05% (V/V) Proclin 300. This antibody is prepared by Saturated Ammonium Sulfate (SAS) precipitation followed by dialysis against PBS.
Storage	Maintain refrigerated at 2-8°C for up to 2 weeks. For long term storage store at -20°C in small aliquots to prevent freeze-thaw cycles.
Precautions	C4orf31 Antibody (N-term) is for research use only and not for use in diagnostic or therapeutic procedures.

Protein Information

Name	NDNF
Synonyms	C4orf31
Function	Secretory protein that plays a role in various cellular processes (PubMed: 20969804 , PubMed: 24706764 , PubMed: 31883645). Acts as a

chemorepellent acting on gonadotropin-releasing hormone (GnRH) expressing neurons regulating their migration to the hypothalamus (PubMed:[31883645](#)). Also promotes neuron migration, growth and survival as well as neurite outgrowth and is involved in the development of the olfactory system (PubMed:[20969804](#), PubMed:[31883645](#)). May also act through the regulation of growth factors activity and downstream signaling (PubMed:[31883645](#)). Also regulates extracellular matrix assembly and cell adhesiveness (By similarity). Promotes endothelial cell survival, vessel formation and plays an important role in the process of revascularization through NOS3-dependent mechanisms (PubMed:[24706764](#)).

Cellular Location

Secreted

Tissue Location

Expressed in neurons along the gonadotropin- releasing hormone (GnRH) expressing neurons migratory route

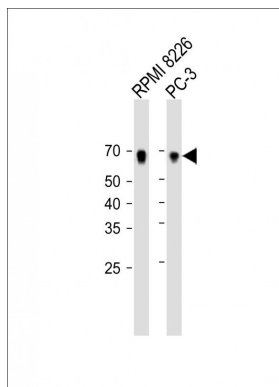
Background

Promotes matrix assembly and cell adhesiveness (By similarity).

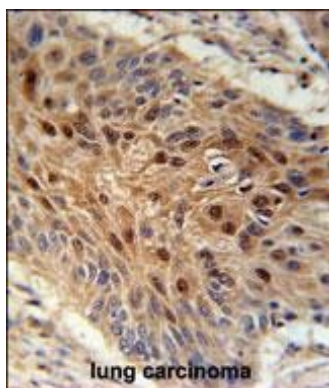
References

Uttie, G.E., et al. Genet. Couns. 17(2):205-209(2006) Clark, H.F., et al. Genome Res. 13(10):2265-2270(2003)

Images

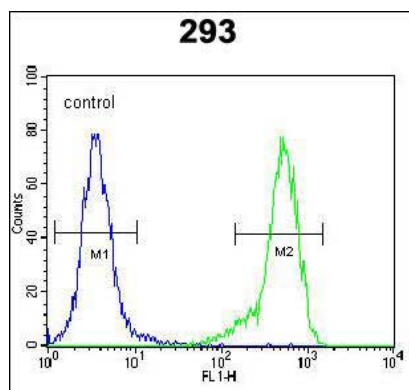


All lanes: Anti-C4orf31 Antibody (N-term) at 1:1000 dilution Lane 1: RPMI 8226 whole cell lysate Lane 2: PC-3 whole cell lysate Lysates/proteins at 20 µg per lane. Secondary: Goat Anti-Rabbit IgG, (H+L), Peroxidase conjugated (ASP1615) at 1/15000 dilution. Observed band size: 65 KDa Blocking/Dilution buffer: 5% NFDm/TBST.



C4orf31 Antibody (N-term) (Cat. #AP5812a) immunohistochemistry analysis in formalin fixed and paraffin embedded human lung carcinoma followed by peroxidase conjugation of the secondary antibody and DAB staining. This data demonstrates the use of the C4orf31 Antibody (N-term) for immunohistochemistry. Clinical relevance has not been evaluated.

C4orf31 Antibody (N-term) (Cat. #AP5812a) flow cytometric analysis of 293 cells (right histogram) compared to a negative control cell (left histogram). FITC-conjugated goat-anti-rabbit secondary antibodies were used for the analysis.



Citations

- [Neuron-derived neurotrophic factor functions as a novel modulator that enhances endothelial cell function and revascularization processes.](#)

Please note: All products are 'FOR RESEARCH USE ONLY. NOT FOR USE IN DIAGNOSTIC OR THERAPEUTIC PROCEDURES'.