

CDKN2B/p15 INK4b Rabbit pAb

CDKN2B/p15 INK4b Rabbit pAb

Catalog # AP58142

Product Information

Application	IHC-P, IHC-F, IF
Primary Accession	P42772
Reactivity	Rat
Predicted	Human, Mouse, Chicken, Dog, Rabbit
Host	Rabbit
Clonality	Polyclonal
Calculated MW	14722
Physical State	Liquid
Immunogen	KLH conjugated synthetic peptide derived from human CDKN2B
Epitope Specificity	65-138/138
Isotype	IgG
Purity	affinity purified by Protein A
Buffer	0.01M TBS (pH7.4) with 1% BSA, 0.02% Proclin300 and 50% Glycerol.
SUBCELLULAR LOCATION	Cytoplasm. Note=Also found in the nucleus.
SIMILARITY	Belongs to the CDKN2 cyclin-dependent kinase inhibitor family.Contains 4 ANK repeats.
SUBUNIT	Heterodimer of CDKN2B with CDK4 or CDK6. Isoform 2 does not interact with CDK4 nor CDK6.
Important Note	This product as supplied is intended for research use only, not for use in human, therapeutic or diagnostic applications.
Background Descriptions	p15 INK4b / MTS 2 (Mitotic Inhibitor / Suppressor Protein) is a specific inhibitor of cdk 4 / cdk 6 and is periodically expressed during the cell cycle. Reportedly, p15 INK4b expression is induced approximately 30 fold in human keratinocytes by treatment with TGF beta, suggesting that p15 INK4b may act as an effector of TGF beta mediated cell cycle arrest. p15 INK4b is mapped to chromosome 9p21, a region of frequent loss in a wide variety of cancers.

Additional Information

Gene ID	1030
Other Names	Cyclin-dependent kinase 4 inhibitor B, Multiple tumor suppressor 2, MTS-2, p14-INK4b, p15-INK4b, p15INK4B, CDKN2B, MTS2
Target/Specificity	Isoform 2 is expressed in normal (keratinocytes, fibroblasts) and tumor cell lines.
Dilution	IHC-P=1:100-500,IHC-F=1:100-500,IF=1:100-500
Storage	Store at -20 °C for one year. Avoid repeated freeze/thaw cycles. When reconstituted in sterile pH 7.4 0.01M PBS or diluent of antibody the antibody

is stable for at least two weeks at 2-4 °C.

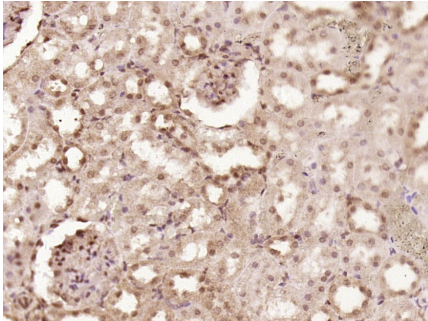
Protein Information

Name	CDKN2B
Synonyms	MTS2
Function	Interacts strongly with CDK4 and CDK6. Potent inhibitor. Potential effector of TGF-beta induced cell cycle arrest.
Cellular Location	Cytoplasm. Note=Also found in the nucleus
Tissue Location	Isoform 2 is expressed in normal (keratinocytes, fibroblasts) and tumor cell lines.

Background

p15 INK4b / MTS 2 (Mitotic Inhibitor / Suppressor Protein) is a specific inhibitor of cdk 4 / cdk 6 and is periodically expressed during the cell cycle. Reportedly, p15 INK4b expression is induced approximately 30 fold in human keratinocytes by treatment with TGF beta, suggesting that p15 INK4b may act as an effector of TGF beta mediated cell cycle arrest. p15 INK4b is mapped to chromosome 9p21, a region of frequent loss in a wide variety of cancers.

Images



Paraformaldehyde-fixed, paraffin embedded (Rat kidney); Antigen retrieval by boiling in sodium citrate buffer (pH6.0) for 15min; Block endogenous peroxidase by 3% hydrogen peroxide for 20 minutes; Blocking buffer (normal goat serum) at 37°C for 30min; Antibody incubation with (CDKN2B) Polyclonal Antibody, Unconjugated (AP58142) at 1:500 overnight at 4°C, followed by a conjugated secondary (sp-0023) for 20 minutes and DAB staining.

Please note: All products are 'FOR RESEARCH USE ONLY. NOT FOR USE IN DIAGNOSTIC OR THERAPEUTIC PROCEDURES'.