

ZNF580 Rabbit pAb

ZNF580 Rabbit pAb

Catalog # AP58152

Product Information

Application	WB
Primary Accession	Q9UK33
Reactivity	Mouse
Predicted	Human, Rat, Dog
Host	Rabbit
Clonality	Polyclonal
Calculated MW	18756
Physical State	Liquid
Immunogen	KLH conjugated synthetic peptide derived from human ZNF580
Epitope Specificity	51-150/172
Isotype	IgG
Purity	affinity purified by Protein A
Buffer	Preservative: 0.02% Proclin300, Constituents: 1% BSA, 0.01M PBS, pH7.4.
SUBCELLULAR LOCATION	Nucleus.
SIMILARITY	Contains 3 C2H2-type zinc fingers.
Important Note	This product as supplied is intended for research use only, not for use in human, therapeutic or diagnostic applications.
Background Descriptions	ZNF580 (Zinc Finger Protein 580) is a Protein Coding gene. An important paralog of this gene is ZNF581.

Additional Information

Gene ID	51157
Other Names	Zinc finger protein 580, LDL-induced EC protein, ZNF580
Dilution	WB=1:500-2000
Storage	Store at -20 °C for one year. Avoid repeated freeze/thaw cycles. When reconstituted in sterile pH 7.4 0.01M PBS or diluent of antibody the antibody is stable for at least two weeks at 2-4 °C.

Protein Information

Name	ZNF580
Function	Involved in the regulation of endothelial cell proliferation and migration. Mediates H(2)O(2)-induced leukocyte chemotaxis by elevating interleukin-8 production and may play a role in inflammation. May be involved in

transcriptional regulation.

Cellular Location

Nucleus. Note=Colocalized with SMAD2 in the nucleus

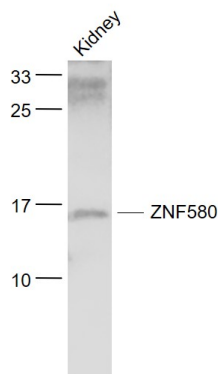
Tissue Location

Expressed in endothelial cells.

Background

ZNF580 (Zinc Finger Protein 580) is a Protein Coding gene. An important paralog of this gene is ZNF581.

Images



Sample:

Kidney (Mouse) Lysate at 40 ug

Primary: Anti- ZNF580 (AP58152) at 1/1000 dilution

Secondary: IRDye800CW Goat Anti-Rabbit IgG at 1/20000 dilution

Predicted band size: 19 kD

Observed band size: 16 kD

Please note: All products are 'FOR RESEARCH USE ONLY. NOT FOR USE IN DIAGNOSTIC OR THERAPEUTIC PROCEDURES'.