

Endomucin Polyclonal Antibody

Purified Rabbit Polyclonal Antibody (Pab)

Catalog # AP58247

Product Information

Application	WB, IHC-F, IF, E
Primary Accession	Q9ULC0
Reactivity	Human
Host	Rabbit
Clonality	Polyclonal
Calculated MW	27452
Physical State	Liquid
Immunogen	KLH conjugated synthetic peptide derived from human Endomucin
Epitope Specificity	21-120/261
Isotype	IgG
Purity	affinity purified by Protein A
Buffer	0.01M TBS (pH7.4) with 1% BSA, 0.02% Proclin300 and 50% Glycerol.
SUBCELLULAR LOCATION	Isoform 1: Cell membrane; Single-pass type I membrane protein. Membrane; Single-pass type I membrane protein. Note=Consistently localized to the plasma membrane and less abundantly to Golgi-like perinuclear stacks.Isoform 2: Secreted (Potential).
Post-translational modifications	Highly O-glycosylated. Sialic acid-rich glycoprotein.
Important Note	This product as supplied is intended for research use only, not for use in human, therapeutic or diagnostic applications.
Background Descriptions	Endothelial sialomucin, also called endomucin or mucin-like sialoglycoprotein, which interferes with the assembly of focal adhesion complexes and inhibits interaction between cells and the extracellular matrix.

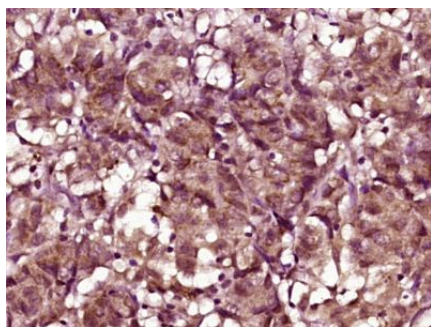
Additional Information

Gene ID	51705
Other Names	Endomucin, Endomucin-2, Gastric cancer antigen Ga34, Mucin-14, MUC-14, EMCN, EMCN2, MUC14
Target/Specificity	Expressed in heart, kidney and lung.
Dilution	WB=1:500-2000,IHC-F=1:100-500,IF=1:50-200,ELISA=1:5000-10000
Format	0.01M TBS(pH7.4) with 1% BSA, 0.09% (W/V) sodium azide and 50% Glyce
Storage	Store at -20 °C for one year. Avoid repeated freeze/thaw cycles. When reconstituted in sterile pH 7.4 0.01M PBS or diluent of antibody the antibody is stable for at least two weeks at 2-4 °C.

Protein Information

Name	EMCN
Synonyms	EMCN2, MUC14
Function	Endothelial sialomucin, also called endomucin or mucin-like sialoglycoprotein, which interferes with the assembly of focal adhesion complexes and inhibits interaction between cells and the extracellular matrix.
Cellular Location	[Isoform 1]: Cell membrane; Single-pass type I membrane protein. Membrane; Single-pass type I membrane protein Note=Consistently localized to the plasma membrane and less abundantly to Golgi-like perinuclear stacks
Tissue Location	Expressed in heart, kidney and lung.

Images



Paraformaldehyde-fixed, paraffin embedded (human colon carcinoma); Antigen retrieval by boiling in sodium citrate buffer (pH6.0) for 15min; Block endogenous peroxidase by 3% hydrogen peroxide for 20 minutes; Blocking buffer (normal goat serum) at 37°C for 30min; Antibody incubation with (Endomucin) Polyclonal Antibody, Unconjugated (AP58247) at 1:400 overnight at 4°C, followed by operating according to SP Kit(Rabbit) (sp-0023) instructions and DAB staining.

Please note: All products are 'FOR RESEARCH USE ONLY. NOT FOR USE IN DIAGNOSTIC OR THERAPEUTIC PROCEDURES'.