

# SETBP1 Polyclonal Antibody

Purified Rabbit Polyclonal Antibody (Pab)

Catalog # AP58253

## Product Information

---

<b>Application</b>	IHC-P, IHC-F, IF, E
<b>Primary Accession</b>	<a href="#">Q9Y6X0</a>
<b>Reactivity</b>	Rat, Pig, Dog, Bovine
<b>Host</b>	Rabbit
<b>Clonality</b>	Polyclonal
<b>Calculated MW</b>	175008
<b>Physical State</b>	Liquid
<b>Immunogen</b>	KLH conjugated synthetic peptide derived from human SETBP1
<b>Epitope Specificity</b>	501-600/1596
<b>Isotype</b>	IgG
<b>Purity</b>	affinity purified by Protein A
<b>Buffer</b>	0.01M TBS (pH7.4) with 1% BSA, 0.02% Proclin300 and 50% Glycerol.
<b>SUBCELLULAR LOCATION</b>	Nucleus.
<b>SIMILARITY</b>	Contains 3 A.T hook DNA-binding domains.
<b>SUBUNIT</b>	Interacts with SET.
<b>DISEASE</b>	Defects in SETBP1 are the cause of Schinzel-Giedion midface retraction syndrome (SGMFS) [MIM:269150]. It is a disorder characterized by severe mental retardation, distinctive facial features, and multiple congenital malformations including skeletal abnormalities, genitourinary and renal malformations, cardiac defects, as well as a higher-than-normal prevalence of tumors, notably neuroepithelial neoplasia.
<b>Important Note</b>	This product as supplied is intended for research use only, not for use in human, therapeutic or diagnostic applications.
<b>Background Descriptions</b>	SETBP1 (SET binding protein 1), also known as SEB, is a 1,542 amino acid nuclear protein that contains three AT hook DNA-binding domains, one SKI homology region and a C-terminal SET-binding domain, which is followed by three PPLPPPPP repeats. SETBP1 may be involved in SET-related tumorigenesis and leukemogenesis by regulating the transforming activity of SKI in the nucleus or suppressing SET function. As a widely expressed protein, SETBP1 is encoded by a gene that maps to human chromosome 18, which houses over 300 protein-coding genes and contains nearly 76 million bases. There are a variety of diseases associated with defects in chromosome 18-localized genes, some of which include Trisomy 18 (also known as Edwards syndrome), Niemann-Pick disease, hereditary hemorrhagic telangiectasia, erythropoietic protoporphyria and follicular lymphomas.

## Additional Information

---

<b>Gene ID</b>	26040
<b>Other Names</b>	SET-binding protein, SEB, SETBP1, KIAA0437

<b>Target/Specificity</b>	Expressed in numerous tissues.
<b>Dilution</b>	IHC-P=1:100-500,IHC-F=1:100-500,IF=1:50-200,ELISA=1:5000-10000
<b>Format</b>	0.01M TBS(pH7.4) with 1% BSA, 0.09% (W/V) sodium azide and 50% Glyce
<b>Storage</b>	Store at -20 °C for one year. Avoid repeated freeze/thaw cycles. When reconstituted in sterile pH 7.4 0.01M PBS or diluent of antibody the antibody is stable for at least two weeks at 2-4 °C.

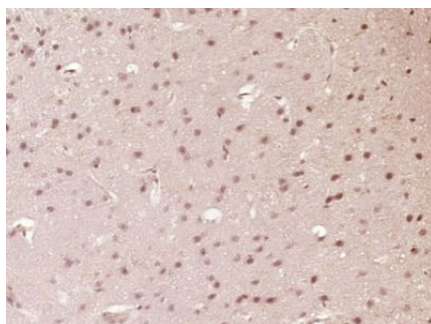
## Protein Information

---

<b>Name</b>	SETBP1
<b>Synonyms</b>	KIAA0437
<b>Cellular Location</b>	Nucleus.
<b>Tissue Location</b>	Expressed in numerous tissues. Expressed at low levels in myeloid and monocytic cells as well as in CD34+ cells; expression levels are higher in myeloid malignancies

## Images

---



Paraformaldehyde-fixed, paraffin embedded (Mouse brain); Antigen retrieval by boiling in sodium citrate buffer (pH6.0) for 15min; Block endogenous peroxidase by 3% hydrogen peroxide for 20 minutes; Blocking buffer (normal goat serum) at 37°C for 30min; Antibody incubation with (SETBP1) Polyclonal Antibody, Unconjugated (AP58253) at 1:400 overnight at 4°C, followed by operating according to SP Kit(Rabbit) (sp-0023) instructions and DAB staining.

Please note: All products are 'FOR RESEARCH USE ONLY. NOT FOR USE IN DIAGNOSTIC OR THERAPEUTIC PROCEDURES'.