

# AGPAT1 Rabbit pAb

AGPAT1 Rabbit pAb  
Catalog # AP58261

## Product Information

---

<b>Application</b>	WB, IHC-P, IHC-F, IF
<b>Primary Accession</b>	<a href="#">Q99943</a>
<b>Reactivity</b>	Mouse, Rat
<b>Predicted</b>	Human, Dog, Pig, Horse, Rabbit, Sheep
<b>Host</b>	Rabbit
<b>Clonality</b>	Polyclonal
<b>Calculated MW</b>	31717
<b>Physical State</b>	Liquid
<b>Immunogen</b>	KLH conjugated synthetic peptide derived from human AGPAT1
<b>Epitope Specificity</b>	101-200/283
<b>Isotype</b>	IgG
<b>Purity</b>	affinity purified by Protein A
<b>Buffer</b>	0.01M TBS (pH7.4) with 1% BSA, 0.02% Proclin300 and 50% Glycerol.
<b>SUBCELLULAR LOCATION</b>	Membrane; Multi-pass membrane protein
<b>SIMILARITY</b>	Belongs to the 1-acyl-sn-glycerol-3-phosphate acyltransferase family.
<b>Important Note</b>	This product as supplied is intended for research use only, not for use in human, therapeutic or diagnostic applications.
<b>Background Descriptions</b>	AGPAT1 converts lysophosphatidic acid (LPA) into phosphatidic acid by incorporating an acyl moiety at the sn-2 position of the glycerol backbone.

## Additional Information

---

<b>Gene ID</b>	10554
<b>Other Names</b>	1-acyl-sn-glycerol-3-phosphate acyltransferase alpha, 2.3.1.51, 1-acylglycerol-3-phosphate O-acyltransferase 1, 1-AGP acyltransferase 1, 1-AGPAT 1, Lysophosphatidic acid acyltransferase alpha, LPAAT-alpha, Protein G15, AGPAT1, G15
<b>Dilution</b>	WB=1:500-2000,IHC-P=1:100-500,IHC-F=1:100-500,IF=1:100-500
<b>Storage</b>	Store at -20 °C for one year. Avoid repeated freeze/thaw cycles. When reconstituted in sterile pH 7.4 0.01M PBS or diluent of antibody the antibody is stable for at least two weeks at 2-4 °C.

## Protein Information

---

<b>Name</b>	AGPAT1
-------------	--------

<b>Synonyms</b>	G15
<b>Function</b>	Converts 1-acyl-sn-glycerol-3-phosphate (lysophosphatidic acid or LPA) into 1,2-diacyl-sn-glycerol-3-phosphate (phosphatidic acid or PA) by incorporating an acyl moiety at the sn-2 position of the glycerol backbone.
<b>Cellular Location</b>	Endoplasmic reticulum membrane; Multi-pass membrane protein
<b>Tissue Location</b>	Widely expressed. Expressed in adipose tissue and at high levels in testis and pancreas. Expressed at lower levels in tissues such as heart, brain, placenta, kidney, lung, spleen, thymus, prostate, ovary, intestine, colon, leukocyte and liver

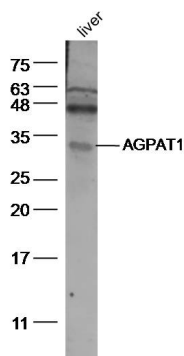
## Background

---

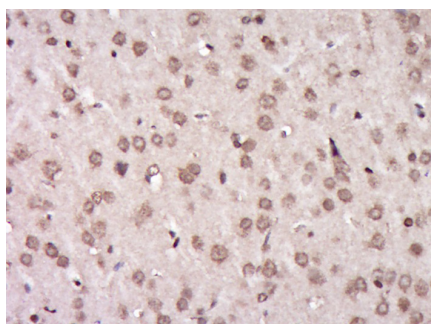
AGPAT1 converts lysophosphatidic acid (LPA) into phosphatidic acid by incorporating an acyl moiety at the sn-2 position of the glycerol backbone.

## Images

---



Sample:  
 Liver (Mouse) Lysate at 40 ug  
 Primary: Anti-AGPAT1 (AP58261) at 1/500 dilution  
 Secondary: IRDye800CW Goat Anti-Rabbit IgG at 1/20000 dilution  
 Predicted band size: 31 kD  
 Observed band size: 31 kD



Paraformaldehyde-fixed, paraffin embedded (Rat brain);  
 Antigen retrieval by boiling in sodium citrate buffer (pH6.0) for 15min; Block endogenous peroxidase by 3% hydrogen peroxide for 20 minutes; Blocking buffer (normal goat serum) at 37°C for 30min; Antibody incubation with (AGPAT1) Polyclonal Antibody, Unconjugated (AP58261) at 1:400 overnight at 4°C, followed by operating according to SP Kit(Rabbit) (sp-0023) instructions and DAB staining.

Please note: All products are 'FOR RESEARCH USE ONLY. NOT FOR USE IN DIAGNOSTIC OR THERAPEUTIC PROCEDURES'.