

# ESAM Polyclonal Antibody

Purified Rabbit Polyclonal Antibody (Pab)

Catalog # AP58327

## Product Information

---

<b>Application</b>	WB, IHC-P, IHC-F, IF, E
<b>Primary Accession</b>	<a href="#">Q96AP7</a>
<b>Reactivity</b>	Rat
<b>Host</b>	Rabbit
<b>Clonality</b>	Polyclonal
<b>Calculated MW</b>	41176
<b>Physical State</b>	Liquid
<b>Immunogen</b>	KLH conjugated synthetic peptide derived from human ESAM
<b>Epitope Specificity</b>	21-120/390
<b>Isotype</b>	IgG
<b>Purity</b>	affinity purified by Protein A
<b>Buffer</b>	0.01M TBS (pH7.4) with 1% BSA, 0.02% Proclin300 and 50% Glycerol.
<b>Important Note</b>	This product as supplied is intended for research use only, not for use in human, therapeutic or diagnostic applications.
<b>Background Descriptions</b>	Can mediate aggregation most likely through a homophilic molecular interaction.

## Additional Information

---

<b>Gene ID</b>	90952
<b>Other Names</b>	Endothelial cell-selective adhesion molecule, ESAM
<b>Dilution</b>	WB=1:500-2000,IHC-P=1:100-500,IHC-F=1:100-500,IF=1:100-500,ELISA=1:5000-10000
<b>Format</b>	0.01M TBS(pH7.4) with 1% BSA, 0.09% (W/V) sodium azide and 50% Glyce
<b>Storage</b>	Store at -20 °C for one year. Avoid repeated freeze/thaw cycles. When reconstituted in sterile pH 7.4 0.01M PBS or diluent of antibody the antibody is stable for at least two weeks at 2-4 °C.

## Protein Information

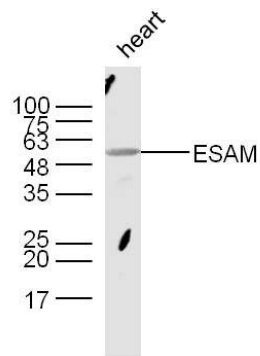
---

<b>Name</b>	ESAM
<b>Function</b>	Can mediate aggregation most likely through a homophilic molecular interaction.

<b>Cellular Location</b>	Cell junction, adherens junction {ECO:0000250 UniProtKB:Q925F2}. Cell junction, tight junction {ECO:0000250 UniProtKB:Q925F2}. Cell membrane; Single-pass type I membrane protein {ECO:0000250 UniProtKB:Q925F2}
<b>Tissue Location</b>	Highly expressed in endothelial cells.

## Images

---



Sample:  
heart (Mouse) Lysate at 40 ug  
Primary: Anti-ESAM (AP58327) at 1/300 dilution  
Secondary: IRDye800CW Goat Anti-Rabbit IgG at 1/20000 dilution  
Predicted band size: 37/41 kD  
Observed band size: 55/48 kD

Please note: All products are 'FOR RESEARCH USE ONLY. NOT FOR USE IN DIAGNOSTIC OR THERAPEUTIC PROCEDURES'.