

# KLK12 Rabbit pAb

KLK12 Rabbit pAb  
Catalog # AP58337

## Product Information

---

<b>Application</b>	WB
<b>Primary Accession</b>	<a href="#">Q9UKR0</a>
<b>Reactivity</b>	Mouse
<b>Predicted</b>	Human, Rat
<b>Host</b>	Rabbit
<b>Clonality</b>	Polyclonal
<b>Calculated MW</b>	26734
<b>Physical State</b>	Liquid
<b>Immunogen</b>	KLH conjugated synthetic peptide derived from human KLK12
<b>Epitope Specificity</b>	151-248/248
<b>Isotype</b>	IgG
<b>Purity</b>	affinity purified by Protein A
<b>Buffer</b>	0.01M TBS (pH7.4) with 1% BSA, 0.02% Proclin300 and 50% Glycerol.
<b>SUBCELLULAR LOCATION</b>	Secreted.
<b>SIMILARITY</b>	Belongs to the peptidase S1 family. Kallikrein subfamily. Contains 1 peptidase S1 domain.
<b>Important Note</b>	This product as supplied is intended for research use only, not for use in human, therapeutic or diagnostic applications.
<b>Background Descriptions</b>	Kallikrein 12, also known as Kallikrein-like5 (KLK-L5), is a trypsin-like serine proteinase. It was discovered by cloning the kallikrein locus on chromosome 19, and was found to be similar to the other kallikrein family genes. It is produced by a number of tissues, including pancreas, salivary gland, breast, prostate, uterus, lung, thymus, thyroid, brain, stomach and colon. Kallikrein 12 message has been reported to be decreased in breast cancer. Different splice variants of kallikrein-12 have been identified; a 254 amino acid form, 248 amino acids form, and a truncated 111 amino acid form.

## Additional Information

---

<b>Gene ID</b>	43849
<b>Other Names</b>	Kallikrein-12, 3.4.21.-, Kallikrein-like protein 5, KLK-L5, KLK12, KLKL5
<b>Dilution</b>	WB=1:500-2000
<b>Storage</b>	Store at -20 °C for one year. Avoid repeated freeze/thaw cycles. When reconstituted in sterile pH 7.4 0.01M PBS or diluent of antibody the antibody is stable for at least two weeks at 2-4 °C.

## Protein Information

---

<b>Name</b>	KLK12
<b>Synonyms</b>	KLKL5
<b>Cellular Location</b>	Secreted.

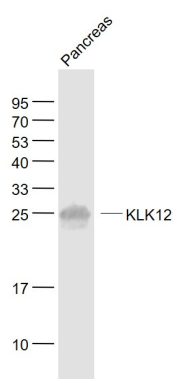
## Background

---

Kallikrein 12, also known as Kallikrein-like5 (KLK-L5), is a trypsin-like serine proteinase. It was discovered by cloning the kallikrein locus on chromosome 19, and was found to be similar to the other kallikrein family genes. It is produced by a number of tissues, including pancreas, salivary gland, breast, prostate, uterus, lung, thymus, thyroid, brain, stomach and colon. Kallikrein 12 message has been reported to be decreased in breast cancer. Different splice variants of kallikrein-12 have been identified; a 254 amino acid form, 248 amino acids form, and a truncated 111 amino acid form.

## Images

---



Sample:  
Pancreas (Mouse) Lysate at 40 ug  
Primary: Anti- KLK12 (AP58337) at 1/1000 dilution  
Secondary: IRDye800CW Goat Anti-Rabbit IgG at 1/20000 dilution  
Predicted band size: 25 kD  
Observed band size: 25 kD

Please note: All products are 'FOR RESEARCH USE ONLY. NOT FOR USE IN DIAGNOSTIC OR THERAPEUTIC PROCEDURES'.