

KLHL7 Polyclonal Antibody

Purified Rabbit Polyclonal Antibody (Pab)

Catalog # AP58348

Product Information

Application	IHC-P, IHC-F, IF, E
Primary Accession	Q8IXQ5
Reactivity	Rat, Pig, Dog, Bovine
Host	Rabbit
Clonality	Polyclonal
Calculated MW	65992
Physical State	Liquid
Immunogen	KLH conjugated synthetic peptide derived from human KLHL7
Epitope Specificity	51-150/856
Isotype	IgG
Purity	affinity purified by Protein A
Buffer	0.01M TBS (pH7.4) with 1% BSA, 0.02% Proclin300 and 50% Glycerol.
SUBCELLULAR LOCATION	Nucleus.
SIMILARITY	Contains 1 BACK (BTB/Kelch associated) domain.Contains 1 BTB (POZ) domain.Contains 6 Kelch repeats.
SUBUNIT	Homodimer. Component of the BCR(KLHL7) E3 ubiquitin ligase complex, at least composed of CUL3 and KLHL7 and RBX1.
DISEASE	Defects in KLHL7 are the cause of retinitis pigmentosa type 42 (RP42) [MIM:612943]. A retinal dystrophy belonging to the group of pigmentary retinopathies. RP is characterized by retinal pigment deposits visible on fundus examination and primary loss of rod photoreceptor cells followed by secondary loss of cone photoreceptors. Patients typically have night vision blindness and loss of midperipheral visual field. As their condition progresses, they lose their far peripheral visual field and eventually central vision as well.
Important Note	This product as supplied is intended for research use only, not for use in human, therapeutic or diagnostic applications.
Background Descriptions	This gene encodes a BTB-Kelch-related protein. The encoded protein may be involved in protein degradation. Mutations in this gene have been associated with retinitis pigmentosa 42. [provided by RefSeq, Feb 2010].

Additional Information

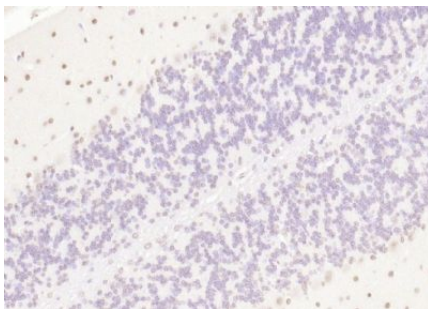
Gene ID	55975
Other Names	Kelch-like protein 7, KLHL7
Target/Specificity	Widely expressed, with highest levels in adult and fetal heart, CNS and adult testis.
Dilution	IHC-P=1:100-500,IHC-F=1:100-500,IF=1:100-500,ELISA=1:5000-10000

Format	0.01M TBS(pH7.4) with 1% BSA, 0.09% (W/V) sodium azide and 50% Glyce
Storage	Store at -20 °C for one year. Avoid repeated freeze/thaw cycles. When reconstituted in sterile pH 7.4 0.01M PBS or diluent of antibody the antibody is stable for at least two weeks at 2-4 °C.

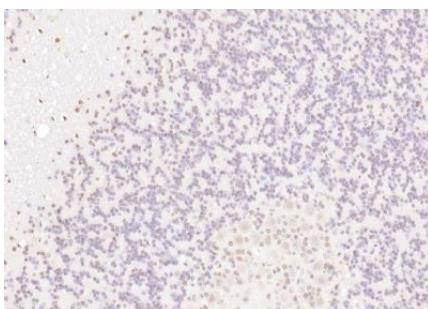
Protein Information

Name	KLHL7
Function	Substrate-specific adapter of a BCR (BTB-CUL3-RBX1) E3 ubiquitin ligase complex. The BCR(KLHL7) complex acts by mediating ubiquitination and subsequent degradation of substrate proteins. Probably mediates 'Lys-48'-linked ubiquitination.
Cellular Location	Nucleus. Cytoplasm. Note=Colocalizes with CUL3 in punctate structures at the perinuclear region of the cytoplasm
Tissue Location	Widely expressed, with highest levels in adult and fetal heart, CNS and adult testis.

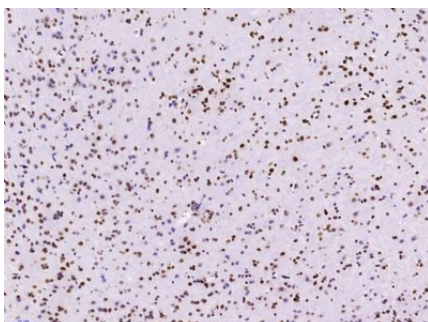
Images



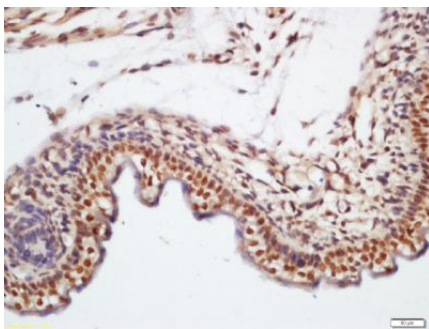
Paraformaldehyde-fixed, paraffin embedded (mouse cerebellum); Antigen retrieval by boiling in sodium citrate buffer (pH6.0) for 15min; Block endogenous peroxidase by 3% hydrogen peroxide for 20 minutes; Blocking buffer (normal goat serum) at 37°C for 30min; Antibody incubation with (KLHL7) Polyclonal Antibody, Unconjugated (AP58348) at 1:200 overnight at 4°C, followed by operating according to SP Kit(Rabbit) (sp-0023) instructionsand DAB staining.



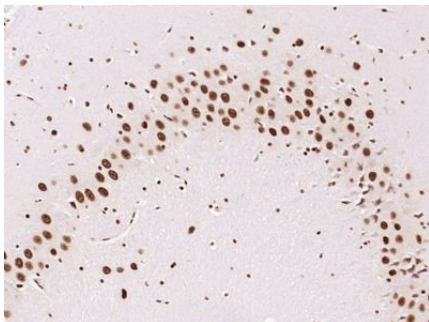
Paraformaldehyde-fixed, paraffin embedded (rat cerebellum); Antigen retrieval by boiling in sodium citrate buffer (pH6.0) for 15min; Block endogenous peroxidase by 3% hydrogen peroxide for 20 minutes; Blocking buffer (normal goat serum) at 37°C for 30min; Antibody incubation with (KLHL7) Polyclonal Antibody, Unconjugated (AP58348) at 1:200 overnight at 4°C, followed by operating according to SP Kit(Rabbit) (sp-0023) instructionsand DAB staining.



Paraformaldehyde-fixed, paraffin embedded (Mouse brain); Antigen retrieval by boiling in sodium citrate buffer (pH6.0) for 15min; Block endogenous peroxidase by 3% hydrogen peroxide for 20 minutes; Blocking buffer (normal goat serum) at 37°C for 30min; Antibody incubation with (KLHL7) Polyclonal Antibody, Unconjugated (AP58348) at 1:400 overnight at 4°C, followed by operating according to SP Kit(Rabbit) (sp-0023) instructionsand DAB staining.



Tissue/cell: mouse embryo tissue; 4%
 Paraformaldehyde-fixed and paraffin-embedded;
 Antigen retrieval: citrate buffer (0.01M, pH 6.0), Boiling
 bathing for 15min; Block endogenous peroxidase by 3%
 Hydrogen peroxide for 30min; Blocking buffer (normal
 goat serum,C-0005) at 37°C for 20 min;
 Incubation: Anti-KLHL7 Polyclonal Antibody,
 Unconjugated(AP58348) 1:200, overnight at 4°C, followed
 by conjugation to the secondary antibody(SP-0023) and
 DAB(C-0010) staining



Paraformaldehyde-fixed, paraffin embedded (Rat brain);
 Antigen retrieval by boiling in sodium citrate buffer
 (pH6.0) for 15min; Block endogenous peroxidase by 3%
 hydrogen peroxide for 20 minutes; Blocking buffer
 (normal goat serum) at 37°C for 30min; Antibody
 incubation with (KLHL7) Polyclonal Antibody,
 Unconjugated (AP58348) at 1:400 overnight at 4°C,
 followed by operating according to SP Kit(Rabbit)
 (sp-0023) instructions and DAB staining.

Please note: All products are 'FOR RESEARCH USE ONLY. NOT FOR USE IN DIAGNOSTIC OR THERAPEUTIC PROCEDURES'.