

RERG Polyclonal Antibody

Purified Rabbit Polyclonal Antibody (Pab)

Catalog # AP58373

Product Information

Application	WB, IHC-P, IHC-F, IF, E
Primary Accession	Q96A58
Reactivity	Rat, Dog, Bovine
Host	Rabbit
Clonality	Polyclonal
Calculated MW	22608
Physical State	Liquid
Immunogen	KLH conjugated synthetic peptide derived from human RERG
Epitope Specificity	101-199/199
Isotype	IgG
Purity	affinity purified by Protein A
Buffer	0.01M TBS (pH7.4) with 1% BSA, 0.02% Proclin300 and 50% Glycerol.
SUBCELLULAR LOCATION	Cytoplasm.
SIMILARITY	Belongs to the small GTPase superfamily. Ras family.
Important Note	This product as supplied is intended for research use only, not for use in human, therapeutic or diagnostic applications.
Background Descriptions	RERG, a member of the RAS superfamily of GTPases, inhibits cell proliferation and tumor formation

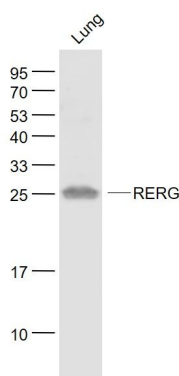
Additional Information

Gene ID	85004
Other Names	Ras-related and estrogen-regulated growth inhibitor, 3.6.5.2, RERG
Target/Specificity	Detected in heart, brain, placenta, lung, liver, skin, kidney and pancreas. Detected in estrogen receptor-positive breast-derived cell lines, but not in estrogen receptor-negative cell lines. Expression is decreased or lost in a significant proportion of primary breast tumors with poor clinical prognosis.
Dilution	WB=1:500-2000,IHC-P=1:100-500,IHC-F=1:100-500,IF=1:100-500,ELISA=1:5000-10000
Format	0.01M TBS(pH7.4) with 1% BSA, 0.09% (W/V) sodium azide and 50% Glyce
Storage	Store at -20 °C for one year. Avoid repeated freeze/thaw cycles. When reconstituted in sterile pH 7.4 0.01M PBS or diluent of antibody the antibody is stable for at least two weeks at 2-4 °C.

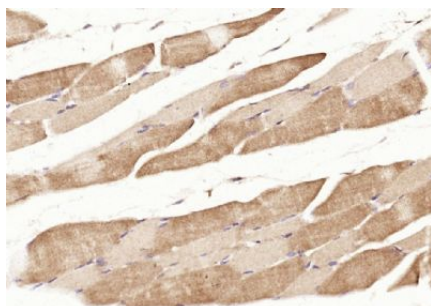
Protein Information

Name	RERG
Function	Binds GDP/GTP and possesses intrinsic GTPase activity. Has higher affinity for GDP than for GTP. In cell lines overexpression leads to a reduction in the rate of proliferation, colony formation and in tumorigenic potential.
Cellular Location	Cytoplasm.
Tissue Location	Detected in heart, brain, placenta, lung, liver, skin, kidney and pancreas. Detected in estrogen receptor-positive breast-derived cell lines, but not in estrogen receptor-negative cell lines. Expression is decreased or lost in a significant proportion of primary breast tumors with poor clinical prognosis

Images



Sample:
Lung (Mouse) Lysate at 40 ug
Primary: Anti- RERG (AP58373) at 1/1000 dilution
Secondary: IRDye800CW Goat Anti-Rabbit IgG at 1/20000 dilution
Predicted band size: 22 kD
Observed band size: 25 kD



Paraformaldehyde-fixed, paraffin embedded (rat skeletal muscle); Antigen retrieval by boiling in sodium citrate buffer (pH6.0) for 15min; Block endogenous peroxidase by 3% hydrogen peroxide for 20 minutes; Blocking buffer (normal goat serum) at 37°C for 30min; Antibody incubation with (RERG) Polyclonal Antibody, Unconjugated (AP58373) at 1:200 overnight at 4°C, followed by operating according to SP Kit(Rabbit) (sp-0023) instructions and DAB staining.

Please note: All products are 'FOR RESEARCH USE ONLY. NOT FOR USE IN DIAGNOSTIC OR THERAPEUTIC PROCEDURES'.