

# SEZ6L Polyclonal Antibody

Purified Rabbit Polyclonal Antibody (Pab)

Catalog # AP58377

## Product Information

---

<b>Application</b>	WB, IHC-P, IHC-F, IF, E
<b>Primary Accession</b>	<a href="#">Q9BYH1</a>
<b>Reactivity</b>	Rat, Pig, Dog, Bovine
<b>Host</b>	Rabbit
<b>Clonality</b>	Polyclonal
<b>Calculated MW</b>	111782
<b>Physical State</b>	Liquid
<b>Immunogen</b>	KLH conjugated synthetic peptide derived from human SEZ6L
<b>Epitope Specificity</b>	701-800/1024
<b>Isotype</b>	IgG
<b>Purity</b>	affinity purified by Protein A
<b>Buffer</b>	0.01M TBS (pH7.4) with 1% BSA, 0.02% Proclin300 and 50% Glycerol.
<b>SUBCELLULAR LOCATION</b>	Endoplasmic reticulum membrane; Single-pass type I membrane protein
<b>SIMILARITY</b>	Belongs to the SEZ6 family. Contains 3 CUB domains. Contains 5 Sushi (CCP/SCR) domains.
<b>Important Note</b>	This product as supplied is intended for research use only, not for use in human, therapeutic or diagnostic applications.
<b>Background Descriptions</b>	SEZ6L is a candidate tumor suppressor gene. This protein may contribute to specialized endoplasmic reticulum functions in neurons.

## Additional Information

---

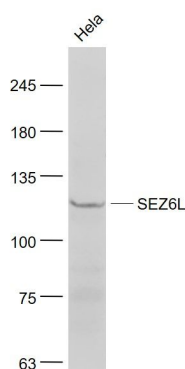
<b>Gene ID</b>	23544
<b>Other Names</b>	Seizure 6-like protein, SEZ6L, KIAA0927
<b>Target/Specificity</b>	Widely expressed, including adult and fetal brains and lungs. Not expressed in all lung cancer cell lines.
<b>Dilution</b>	WB=1:500-2000,IHC-P=1:100-500,IHC-F=1:100-500,IF=1:100-500,ELISA=1:5000-10000
<b>Format</b>	0.01M TBS(pH7.4) with 1% BSA, 0.09% (W/V) sodium azide and 50% Glyce
<b>Storage</b>	Store at -20 °C for one year. Avoid repeated freeze/thaw cycles. When reconstituted in sterile pH 7.4 0.01M PBS or diluent of antibody the antibody is stable for at least two weeks at 2-4 °C.

## Protein Information

---

<b>Name</b>	SEZ6L
<b>Synonyms</b>	KIAA0927
<b>Function</b>	May contribute to specialized endoplasmic reticulum functions in neurons.
<b>Cellular Location</b>	Endoplasmic reticulum membrane; Single-pass type I membrane protein
<b>Tissue Location</b>	Widely expressed, including adult and fetal brains and lungs. Not expressed in all lung cancer cell lines

## Images



### Sample:

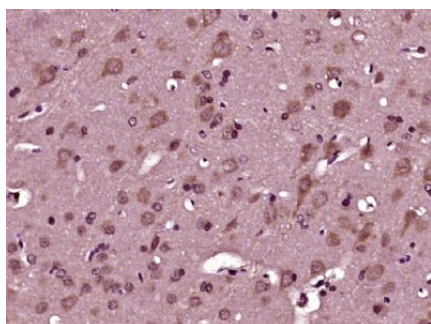
HeLa(Human) Cell Lysate at 30 ug

Primary: Anti- SEZ6L (AP58377) at 1/1000 dilution

Secondary: IRDye800CW Goat Anti-Rabbit IgG at 1/20000 dilution

Predicted band size: 109 kD

Observed band size: 110 kD



Paraformaldehyde-fixed, paraffin embedded (rat brain tissue); Antigen retrieval by boiling in sodium citrate buffer (pH6.0) for 15min; Block endogenous peroxidase by 3% hydrogen peroxide for 20 minutes; Blocking buffer (normal goat serum) at 37°C for 30min; Antibody incubation with (SEZ6L) Polyclonal Antibody, Unconjugated (AP58377) at 1:400 overnight at 4°C, followed by operating according to SP Kit(Rabbit) (sp-0023) instructions and DAB staining.

Please note: All products are 'FOR RESEARCH USE ONLY. NOT FOR USE IN DIAGNOSTIC OR THERAPEUTIC PROCEDURES'.